



Wildspace!

News from Parndon Wood Nature Reserve

July 2010

e-news

Welcome to the July edition of Wildspace E-News, the monthly newsletter that keeps you in touch with all the activities and news from across Harlow Council's Nature Reserves and Wildlife Sites.

Picture of the Month

In this month's issue:

- Picture of the Month
- A good read!
- Greenteam Volunteers
- International Year of Biodiversity 2010
- Forest Funtasia
- Events
- Printable calendar
- Teddy Bears Picnic



Bee Orchid (*Ophrys apifera* var. *belgarum*)

A new find for Harlow this week! A local orchid expert Colin Metherell has discovered a new variety of Bee Orchid on some verges on the west side of Town. The common Bee Orchid is the smaller photo in the top left corner and has a different patterned "bee"!

A good read!

Every now and then I pick a book from the collection at Parndon Wood and have a good read. It amazes me just how approaches to woodland management have changed over the years!

The book I picked this week is called; "*The Romance of Englands Forests*", by J. Morewood Dowsett, published in 1942.

The book describes the authors views on woodlands in England in the past and at the time of writing and contains some very funny views.

He states, "too many trees may harm a land by endengering an excess of rainfall. No one wants to live in a Britain similar to that described by Pytheas in the fourth century B.C. for it was a land of clouds and rain where the sun never shone and the ground became a quagmire after every one of the frequent storms".

He devotes a chapter to Epping Forest where he says:

"The visitor to the forest may experience some slight disappointment . The trees will not be tall enough for him, for in all of our minds there is a vision of an ideal forest composed of masses of gigantic trees. But the Forest of Epping is one that has suffered continual interference from the hand of man. For centuries the inhabitants possessed the right to lop branches within reach of their axes for winter fuel, thus for five months of the year these trees had their natural growth mutilated by indiscriminating peasants, who thought more of the fuel they could procure than the welfare of the trees".

We know nowadays that it was because of this cyclical lopping that the trees have survived into a great age and provide an important habitat for many extremely rare bugs and beasties that can only survive in such old misshapen trees.

The lesson is these old books are very interesting reads but should not be used as management tools. I will certainly think twice before reading a book that states, "The binding of this book conforms to the binding economy standard"!

Greenteam Volunteers

This week the volunteers were at Parndon Wood preparing a bridge ready to be installed along a footpath near Hare Street. Access along the path can be difficult in the winter months as a small spring bubbles up so a small bridge across this point will make access a lot easier.



New bench at Latton

Over the coming weeks there is a varied programme of works across the Towns wildlife sites giving us all a chance to enjoy the sunny weather!

Greenteam Tasks

July-Sept 2010

July 7th – Maymeads Marsh: bridge construction

July 21st – Hare Street: footpath improvements

August 4th – Hawkenbury Meadow: sycamore removal- joined by the Wednesday volunteers

August 18th – Parndon Moat Marsh: grass cutting

September 1st – Maymeads Marsh: reedmace pulling- joined by the Wednesday volunteers

September 8th- Latton Woods: trail improvements/bench installation with GSK.

For more information contact:
glenn.mulleady@harlow.gov.uk
or 01279 430005

International Year of Biodiversity 2010

The Great Fen is the largest wetland restoration project in lowland England. It aims to create a beautiful fenland landscape of more than 3,700 hectares (9,000 acres) between Huntingdon and Peterborough.

The Fens are the UK's own version of the rainforests – 99% have been lost, leaving our local wildlife struggling to survive.

The Great Fen area will support many kinds of threatened Fen wildlife, such as otters, dragonflies, butterflies and rare birds. It will also provide a home to some flowers and plants found almost nowhere else in the UK.



Some areas of the Great Fen Project will be used to store floodwater to reduce the risk of flooding for surrounding farmland and communities. The Great Fen Project will also stop 350,000 tonnes of carbon dioxide from being released every year into the atmosphere from the bare peat soils.

This project is a partnership of the Environment Agency, Huntingdonshire District Council, Middle Level Commissioners, Natural England and the Wildlife Trust. Around 60% of the land in the project area has been acquired by the partners and is being restored to benefit fenland wildlife. In August 2007 the project was awarded a grant of £7.3 million from the Heritage Lottery Fund – the largest ever given for an environmental project in England.

Further information:

www.biodiversityislife.net

forest funtasia



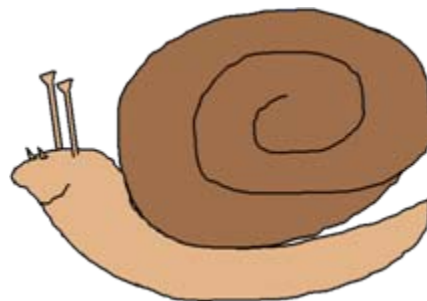
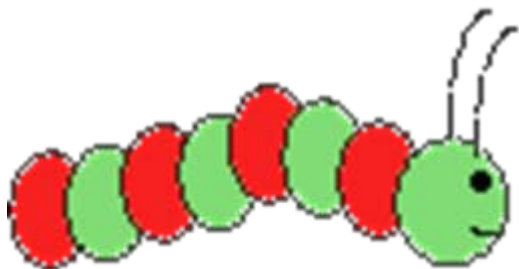
Summer Holiday: Forest Funtasia

Join in for a summer of wild fun with den building, pond dipping, bug hunting, natural art and more!

Commencing Tuesday 27th July through to Friday 27th August

Tuesdays and Wednesdays 1pm-4pm

Thursdays and Fridays 9.30am-12.30pm



For more information on any of the events or to book your place please call 01279 430005 or email glenn.mulleady@harlow.gov.uk. Please note that for all events children must be accompanied by an adult.

Useful Links

- ❑ www.ancient-tree-hunt.org.uk to see details of the nationwide search for veteran trees.
- ❑ www.uksafari.com information on UK wildlife and identification charts.
- ❑ www.favouritetrees.com for information on The Epping Forest District search for veteran trees
- ❑ www.naturegrid.org.uk for information on biodiversity resources for teachers.
- ❑ www.londoncanals.co.uk for information on Londons canals!
- ❑ www.woodland-trust.org.uk for information on woodlands nationwide.
- ❑ www.enaturenotes.org.uk to create your own nature diary.
- ❑ www.naturedetectives.org.uk for childrens wildlife sheets and activities.
- ❑ www.foresteducation.org.uk for details of forest education schemes nationwide.
- ❑ www.efct.info details of a local Epping Forest Conservation Charity organising walks and events.
- ❑ www.harlowwildlife.org.uk for information on Harlow Conservation Volunteers and their work in the Town.
- ❑ www.harlowbees.co.uk for information on bees and bee keeping in Harlow

Contact Us

If you would like to find out more information, book a place on any of our events or have ideas and suggestions for our wildlife sites please contact us at:

Parndon Wood Nature Reserve
Parndon Wood Road
Harlow, Essex
CM19 4SF

Telephone: (01279) 430005

Email Biodiversity Officer :
glenn.mulleady@harlow.gov.uk

Website: www.harlow.gov.uk

Opening Times

Parndon Wood opening hours from
1st April-30th September 2010:

Saturdays 9am-6pm

Sundays 9am-6pm

Tuesdays 7-9pm

Open Bank Holidays 9am-6pm

Other times can be arranged by
appointment for community groups
and school visits.

Events July

Tuesday 6th- Bat walk 9-10pm

Join the warden in a walk around the trail in search of our nocturnal friends. Booking essential.

Saturday 10th- Acorn Group 9am-12pm

Come along to Parndon Wood and help the warden around the reserve. Suitable for 12-16 year olds.

Sunday 11th- Butterfly walk 1-2pm

Join the warden in a walk around the reserve in search of colourful flying skippers and fritillaries! Booking essential.

Sunday 25th- Dragonfly walk 1-2pm

Join the warden in search of dragonflies and damselflies around our many ponds. Booking Essential.

Extended Summer opening hours:

Tuesday 27th-Wed 28th- Forest Funtasia 1-4pm

Thursday 29th-Friday 30th- Forest Funtasia 9.30am-12.30pm

For all events: Please contact Glenn on 01279 430005 or glenn.mulleady@harlow.gov.uk to book your place. Please note that children must be accompanied by an adult.



July 2010

Parndon Wood open Saturdays & Sundays 9am-6pm & Tuesdays 7-9pm
 Nature Club 3.45-5.45 Term Time only

MON	TUE	WED	THU	FRI	SAT	SUN
			1	2	3	4
5	6 Bat Walk 9-10pm	7 Greenbeam 10am-3pm	8	9	10 Acom Group 9am-12pm	11 Butterfly Walk 1-2pm
12	13	14	15	16	17	18
19	20	21 Greenbeam 10am-3pm	22	23	24	25 Dragonfly Walk 1-2pm
26	27 Forest Fantasia 1-4pm	28 Forest Fantasia 1-4pm	29 Forest Fantasia 9.30am- 12.30pm	30 Forest Fantasia 9.30am- 12.30pm	31	

Teddy Bears

Picnic

Saturday 24th July 2010

From 13:30

Bring Your Own Teddy,
Picnic & Blanket



The Annabelle Rose Foundation's Teddy Bears Picnic

Taking Place at Parndon Wood Nature Reserve from 1.30pm.

There will be no entry charge – just a donation on the day if you wish.

The afternoon's events will include;

A Teddy bear trail and

Story time with the princess of the woods

SNOW WHITE

We look forward to seeing you there

For further info: please email: events@annabellerosefoundation.co.uk

Or call (01279) 420201



www.annabellerosefoundation.co.uk