

Basic facts about Great Parndon Ward



Written by LGA Research from Local Government Association

Basic facts about Great Parndon Ward

Contents

[Residents](#)

[Age](#)

[Ethnicity](#)

[Households](#)

[Employment](#)

[Education](#)

[Health](#)

[Further information](#)

This report provides a summary of the latest available information on the demographic and socio-economic make-up of the Great Parndon ward within Harlow district. It looks at the population structure and provides information on the economic, housing and educational achievement of the ward.

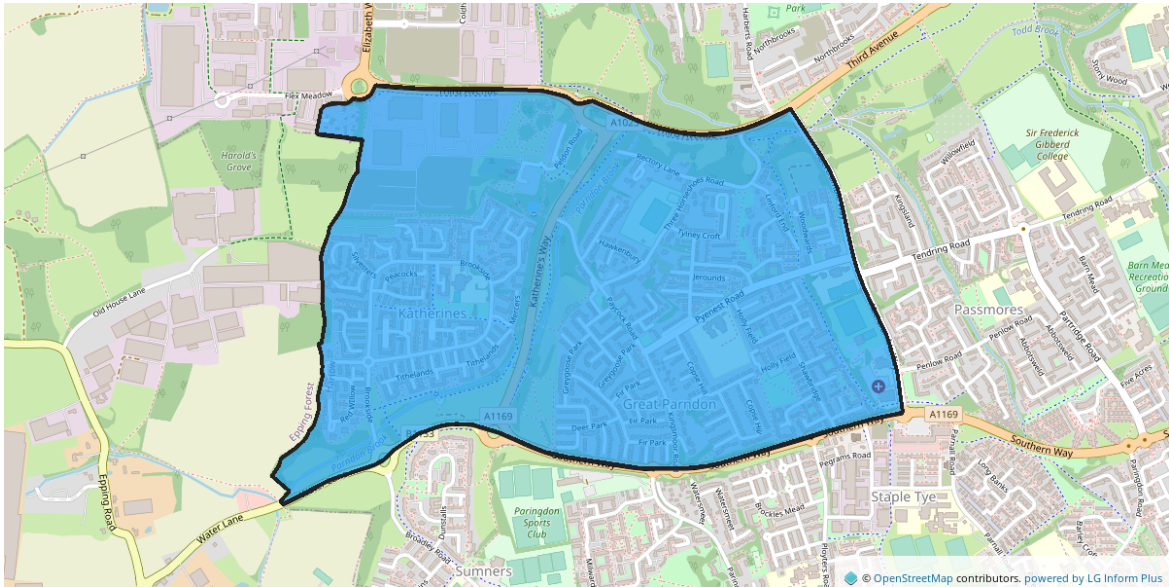
This sample report is part of a series of reports available from the Local Government Association's LG Inform Plus service. Other free reports include demographic and economic profiles of Harlow and a health and wellbeing profile which enables a side by side comparison of all wards in Harlow.

With a subscription to LG Inform Plus there are many more reports about your area available to you. You can also see detailed maps, charts, tables and reports about any of nearly 1500 metric types from the LG Inform Plus database showing information about as the population, health, economy and facilities in your area (and much else).

A subscription also allows you to create your own tables, charts and maps for wards and other areas within your authority's boundary, or build a custom area report using the full set of national and local data stored in our database, as well as giving you access to many other useful tools.

To find out more about our service please telephone 020 7664 3001, email: lginformplus@local.gov.uk or take a look at <http://about.esd.org.uk/subscription-benefits>.

Great Parndon is one of the 11 Wards of Harlow. It has an area of [172 hectares](#) which represents [5.63%](#) of the total area of Harlow district .



Residents

The resident population of Great Parndon in 2021 was [6,594](#) which represents [7.07%](#) of the total Harlow district resident population of [93,328](#).

Great Parndon's resident population is [3,358](#) ([50.9 people \(per 100 people\)](#)) female and [3,236](#) ([49.1 people \(per 100 people\)](#)) male.

Great Parndon has [294](#) households with dependent children aged 0 to 4. That represents [10.42%](#) of the ward's households. [765](#) households in the ward have dependent children of all ages. That represents [26.94%](#) of the ward's households.

	Female (count of all usual residents)	Male (count of all usual residents)	All usual residents
	2021	2021	2021
	People	People	People
Great Parndon	3,358	3,236	6,594

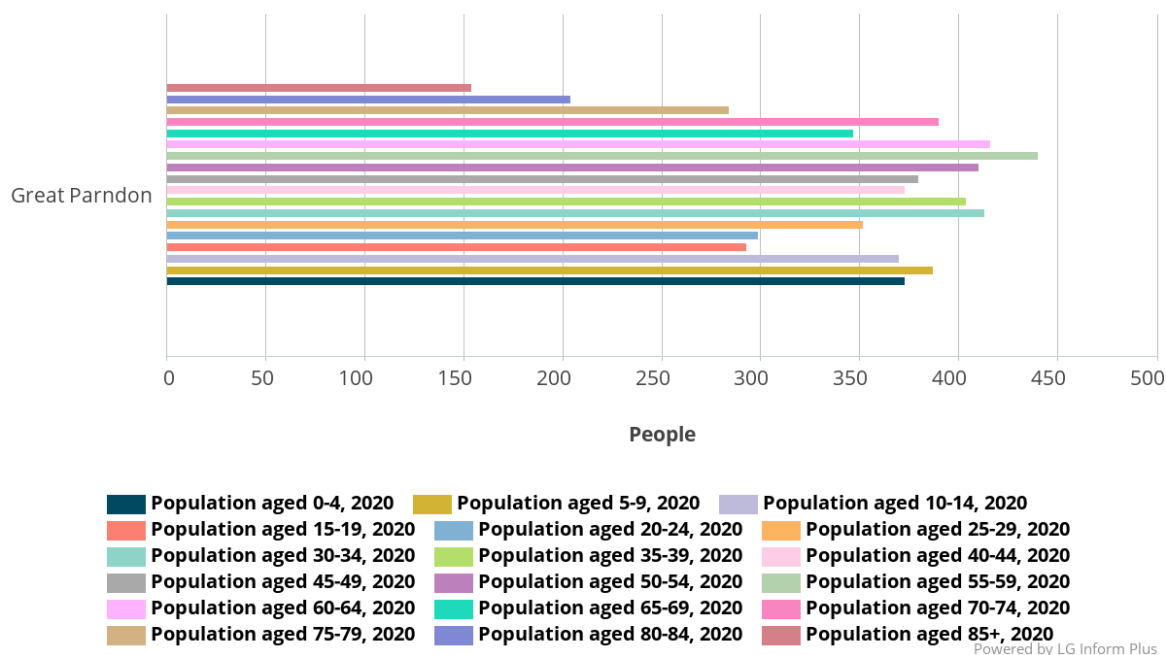
Age

The predominant age band in Great Parndon in 2020 was 'population aged 55-59' with [440 people](#) out of the total population of [6,594](#).

The mean age of the Great Parndon ward population was [41](#) years compared to a mean age of [38](#) years for residents in the whole of Harlow in 2011.

Population (unrounded) broken down by age band (5 year bands) (count) (Count) (2020) for Great Parndon

source: Mid-year estimates

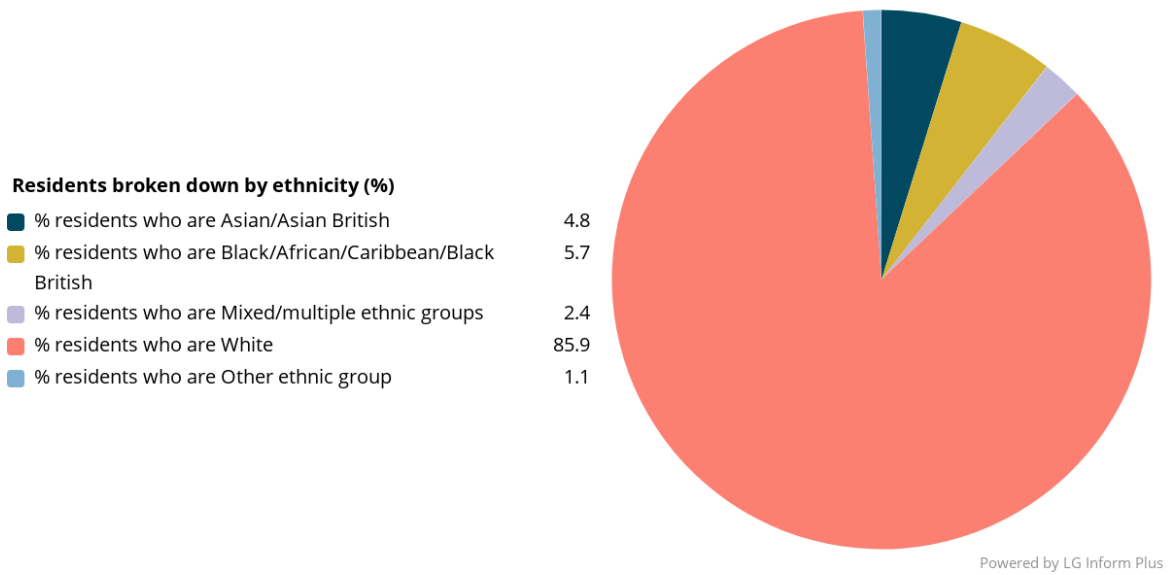


Ethnicity

The largest ethnic group in Great Parndon in 2021 was 'Percentage of usual residents who are White' with [85.9 people \(per 100 people\)](#) of the ward's population. That compares with a figure of [89.1%](#) for Harlow district as a whole and [94.3%](#) for Essex .

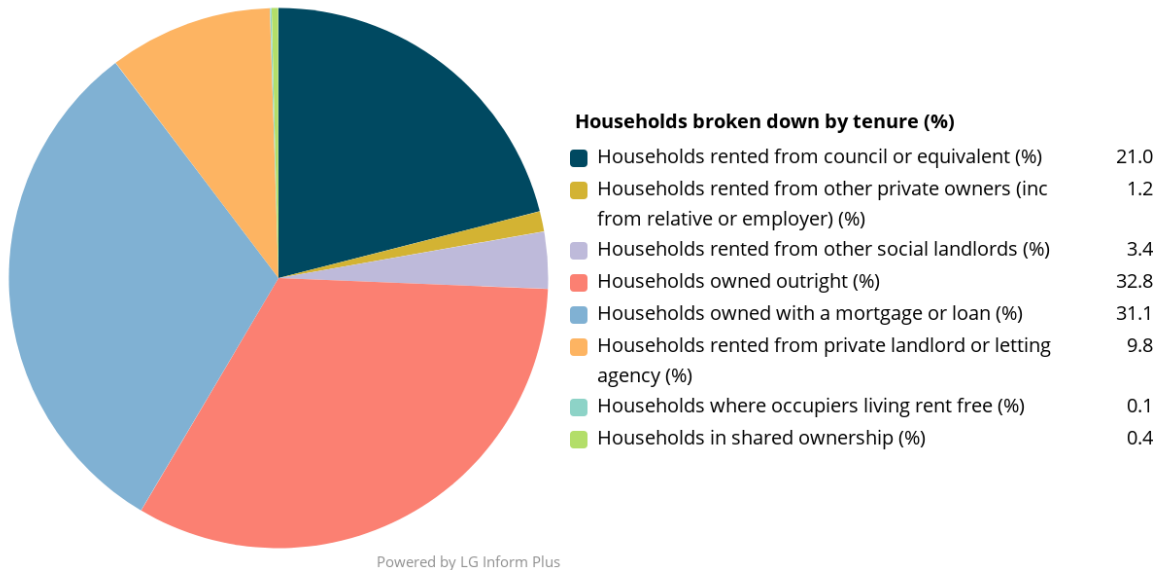
The second largest ethnic group was 'Percentage of usual residents who are Black/African/Caribbean/Black British' with [5.7 people \(per 100 people\)](#) of the ward's population. That compares with [4.6%](#) for the district as a whole and [2.5%](#) for Essex.

The ethnic split of Great Parndon's residents in 2021 is shown below.



Households

In 2021 Great Parndon ward had [2,840](#) households, which represent [7.50%](#) of Harlow's [37,857](#) households. The household split by tenure is shown below.



The largest number of households lives in households owned outright (%) accommodation with [32.8%](#) of Great Parndon households. That compares with [23.0%](#) for Harlow district as a whole and [36.3%](#) for Essex.

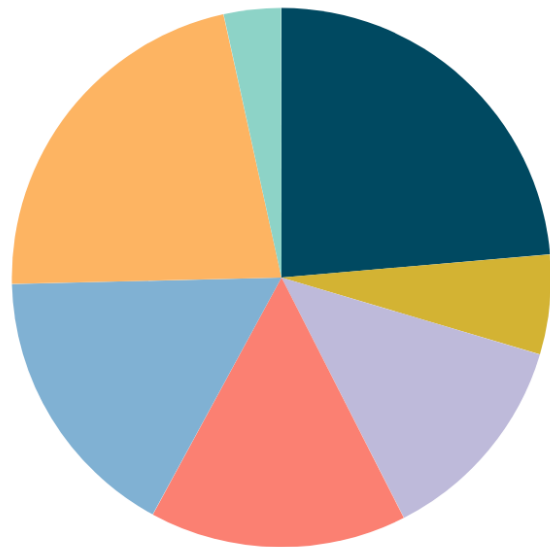
The second largest number of households lives in households owned with a mortgage or loan (%)

accommodation with [31.1%](#) of the ward's households. That compares with [30.7%](#) for the district as a whole and [32.7%](#) for Essex.

Education

Residents broken down by educational qualifications (%)

No qualifications (%)	23.63
Apprenticeship (%)	5.98
Level 1 qualifications (%)	12.89
Level 2 qualifications (%)	15.43
Level 3 qualifications (%)	16.69
Level 4 qualifications and above (%)	21.93
Other qualifications (%)	3.45



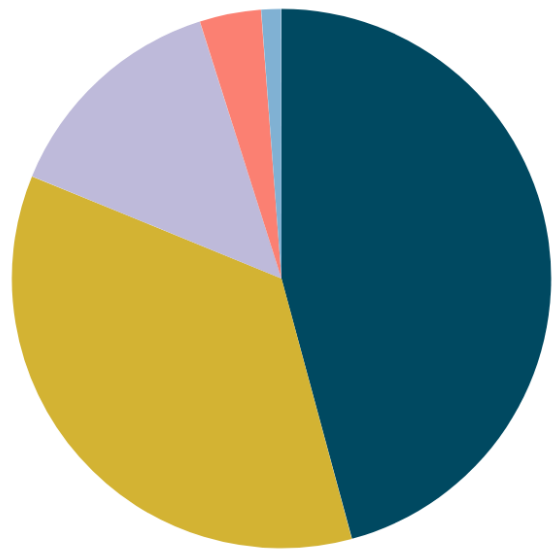
Powered by LG Inform Plus

[21.93 people \(per 100 people\)](#) of Great Parndon's residents have achieved level 4 qualifications and above compared to [24.44 people \(per 100 people\)](#) in Harlow as a whole and [23.63 people \(per 100 people\)](#) of Great Parndon's residents have no qualifications compared to [21.02 people \(per 100 people\)](#) in Harlow.

Health

Residents broken down by level of health (%)

■ % of residents reporting very good health	45.8
■ % of residents reporting good health	35.4
■ % of residents reporting fair health	13.9
■ % of residents reporting bad health	3.7
■ % of residents reporting very bad health	1.2



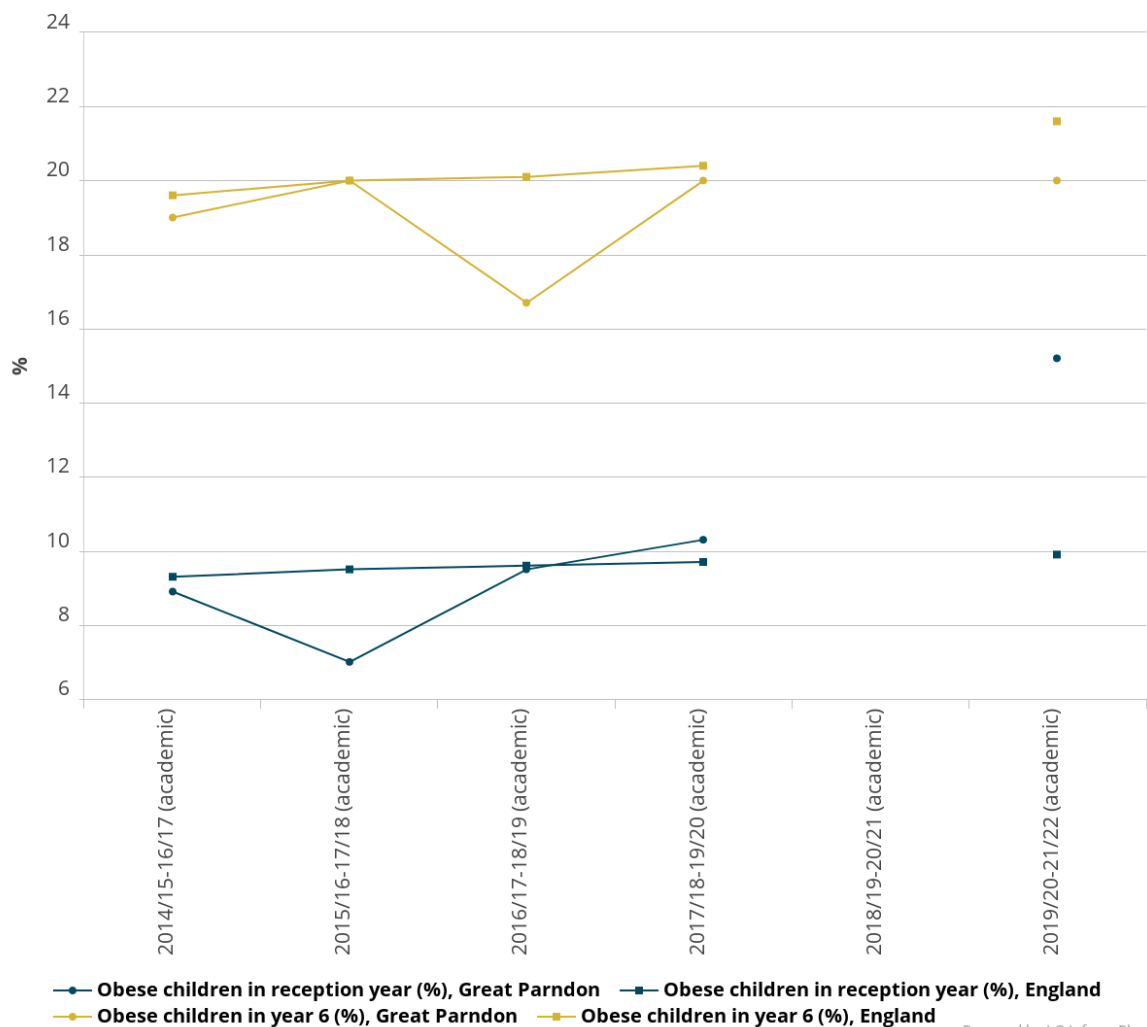
Powered by LG Inform Plus

In 2021 Great Parndon had [246 \(3.7 people \(per 100 people\)\)](#) residents that reported being in bad health and [78 \(1.2 people \(per 100 people\)\)](#) residents that reported being in very bad health.

Its ranking for the number of residents in very bad health is 4 (out of 11 Wards) within Harlow.

The chart below shows the percentage of children who are obese in both the reception year and year 6 in Great Parndon for the 3 academic years up to 2019/20-21/22 (academic)

% of measured children in reception year classified as obese (%) (from 2014/15-16/17 (academic) to 2019/20-21/22 (academic)) and % of measured children in year 6 classified as obese (%) (from 2014/15-16/17 (academic) to 2019/20-21/22 (academic)) for Great Parndon and England



Further information

This is a sample report which provides a selection of information about your ward. To get more information and create charts, tables and maps for your own reports, you could consider subscribing to LG Inform Plus. See <http://about.esd.org.uk/subscription-benefits> or contact the LG Inform Plus team at lginformplus@local.gov.uk with any queries. Subscriptions go towards supporting the sustainability of the local government information standards and LG Inform Plus tools for the benefit of the whole sector.

References

This report was generated using data from:

[Nomis; Annual Population Survey](#)

[Office for Health Improvement and Disparities \(OHID\); Child obesity and excess weight: small area level data](#)

[Office for National Statistics; Census](#)

[Office for National Statistics; Mid-year estimates](#)