
OFFICE PREMISES TO LET

26 WYCH ELM, HARLOW, ESSEX CM20 1QR



First Floor Unit



Passage Leading to Unit



Frontage of Unit

Harlow Council has this rare opportunity of an office unit becoming available in the well run area of Wych Elm.

Location

26 Wych Elm is located on the first floor within Wych Elm office block to the North of Harlow Town Centre. Good road/bus/rail links and close to Harlow Town Centre.

Unit Size

1,070sq.ft

Condition of Unit

Recently refurbished and currently with sub-divided partitions which are removable if not required. The unit offers a spacious Bathroom/WC, Kitchen with cupboards. Good sized office space.

Market Rent

£9,000 p.a/ £8.42 per sqft

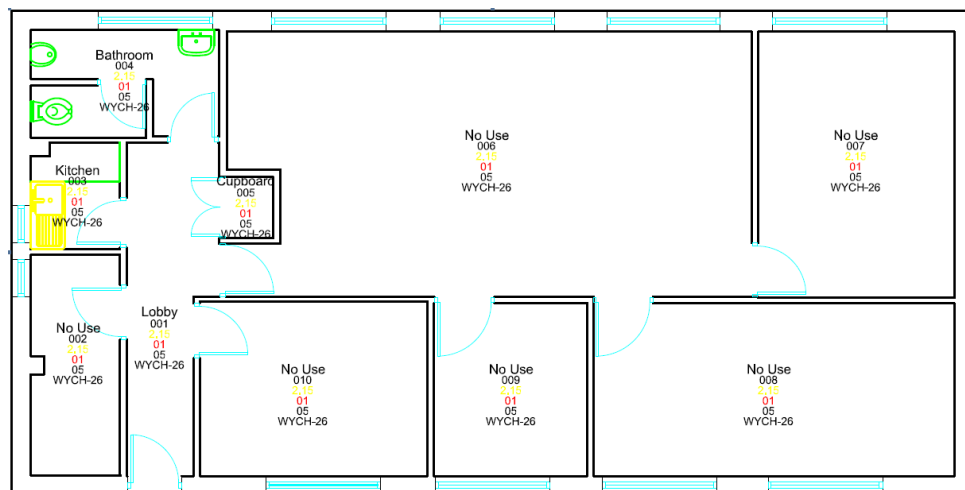
Please note: This document does not form part of the contract and does not indicate acceptance of contract.
This document is for informational purposes only

OFFICE PREMISES TO LET 26 WYCH ELM, HARLOW, ESSEX CM20 1QR

Service Charge

Nominal Service charge required to cover building insurance, cleaning and maintenance to the common areas of the block.
Circa approx. £140.00 per month.

FLOOR PLAN



Viewing/Further Information

Viewings are to be arranged through Gita Vyas (Harlow District Council)

Tel: 01279446806 E-mail: gita.vyas@harlow.gov.uk

Please note: This document does not form part of the contract and does not indicate acceptance of contract.
This document is for informational purposes only