

## The Artists' Approach

### Angela Godfrey

The sculpture is carved in Dunhouse sandstone which is a millstone grit from Co. Durham. The words were suggested by the speech made by the engineer, Thomas Yeoman, at the celebrations in Bishops Stortford to mark the opening of the River Stort to navigation in October 1769.



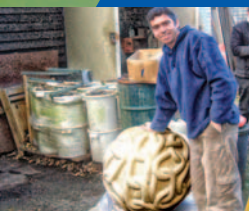
### Nicola Burrell

I was fascinated by the fact that Latton Lock was once a busy industrial site, and looked for traces and remains of the water mill which once stood there. I became inspired by the wheels, cogs and mechanisms of the mill and wanted to capture the water and the movement of mechanical parts along with the overall form that could evoke something of the mill and be symbolic of it.



### Graeme Mitcheson

The idea for the spheres came from the thought that the canal would join Harlow to the rest of the world, so the initial ideas I came up with were of globe shapes. After this I began to incorporate objects that related directly to that part of the canal such as the fish, ropes and chains.



### Anthony Lysycia

The words 'Man may come and go but the river goes on forever' was brought to my attention during the talk at Parndon Mill by the local historian, Richard Thomas, who has written a short history of the Stort Navigation.



### Karen Murphy

I create site specific work that is inspired by its environment. In this case, each glass element was cast from specific items that were found in the vicinity of the bridge; including both natural flora as well as manmade objects that relate to the mill and the lock.



### Alan Freeman

The link to the site and the mill is in the design of the treads which are based on the shape and the grooves of a millstone. The metalwork suggests growth to be in harmony with the surroundings.



## Along the Trail

**Parndon Mill** on the banks of the Stort provides studios and workshops for artists and a fine art gallery which is open to the public. Parndon Mill, Elizabeth Way, Harlow CM20 2HP 01279 426042 [www.parndonmill.co.uk](http://www.parndonmill.co.uk)

**Parndon Moat Marsh** and **Maymeads Marsh**, two of Harlow's local nature reserves, are protected sites containing rare species of wildlife.

**Harlow Town Park** is situated within walking distance of the waterway, a 164 acre park that includes Pets Corner and many other attractions.

**The Gibberd Garden**, designed by Sir Frederick Gibberd, Harlow's masterplanner, has been described as one of the most important gardens of the 20th century. Marsh Lane, Gildea Way, Harlow, CM17 0NA 01279 442112 [www.thegibberdsgarden.co.uk](http://www.thegibberdsgarden.co.uk)

For more about the history of the River Stort and for further information about the waterway visit [www.waterscape.com](http://www.waterscape.com)

For more information on Harlow's attractions go to [www.visitharlow.com](http://www.visitharlow.com)

This project has been realised through a central government regeneration initiative. Managed by Harlow Council Arts Development this scheme has involved a range of partners including British Waterways, Groundworks and Parndon Mill.

[waterscape.com](http://waterscape.com)



# THE RIVER STORT SCULPTURE TRAIL



To celebrate our heritage of the waterway a piece of sculpture has been sited at each of the four locks in Harlow. In addition a raised walkway in metal and glass crosses the weir at Parndon Mill. Each sculptural piece has historic reference to its location.

**Flowing Onwards**  
by Angela Godfrey  
2007, Dunhouse sandstone  
Parndon Lock



**Over the Weir**  
Design and fabrication by Alan Freeman  
Glass by Karen Murphy.  
Raised walkway spanning the weir at Parndon Mill



# THE RIVER STORT SCULPTURE TRAIL

Parndon Mill ← 1/2 mile → Burnt Mill ← 1 mile → Latton Lock ← 1 mile → Harlow Mill ← 1 mile → Gibberd Garden

← WHEELCHAIR ACCESS →

D I S T A N C E S



- Key:**
- Parking
  - Public House
  - Hotel



**The Flowing River**  
by Anthony Lysycia.  
2008, Sandstone.  
Harlow Lock



**Mill**  
by Nicola Burrell  
2007, Concrete  
Latton Lock



**Short Stort Thoughts**  
by Graeme Mitcheson  
2007, Peak Moor Sandstone  
Burnt Mill Lock

Maymeads Marsh  
Nature Reserve

Parndon Moat Marsh  
Nature Reserve

Parndon Mill

HARLOW TOWN STATION

DISABLED WC

HARLOW OUTDOORS CENTRE

TARLINGS PARK

GILSTON HOUSE

EASTWICK ROAD

EASTWICK LOCK FARM

PARNDON LOCK

PARNDON MILL

PARNDON LOCK

INDUSTRIAL ESTATE

QUEENSGATE CENTRE

TEMPLE FIELDS

ROMAN TEMPLE

HARLOW MILL BRIDGE

HARLOW TOWN STATION

HARLOW TOWN STATION

TOWN PARK & TOWN CENTRE

EDINBURGH WAY

AY169

AY169

AY169

AY169

AY169

AY169

AY169

AY169

HIDE

WATER

WATER

WATER

WATER

WATER

WATER

WATER

WATER

WATER

WATER

WATER

WATER

WATER

WATER

WATER

WATER

WATER

WATER

WATER

WATER

WATER

WATER

WATER

WATER

WATER

WATER

WATER

WATER

WATER

WATER

WATER

WATER

WATER

WATER

WATER

WATER

WATER

WATER

WATER

WATER

WATER

WATER

WATER

WATER

WATER

WATER

WATER

WATER

WATER

WATER

WATER

WATER

WATER

WATER

WATER

WATER

WATER

WATER

WATER

WATER

WATER

WATER

WATER

WATER

WATER

WATER

WATER

WATER

WATER

WATER

WATER

WATER

WATER

WATER

WATER

WATER