

## SCHEDULE OF AMENDMENTS TO POLICIES MAP – MARCH 2020

### HARLOW LOCAL DEVELOPMENT PLAN POLICIES MAP – AMENDMENTS TO IMPLEMENT MAIN MODIFICATIONS

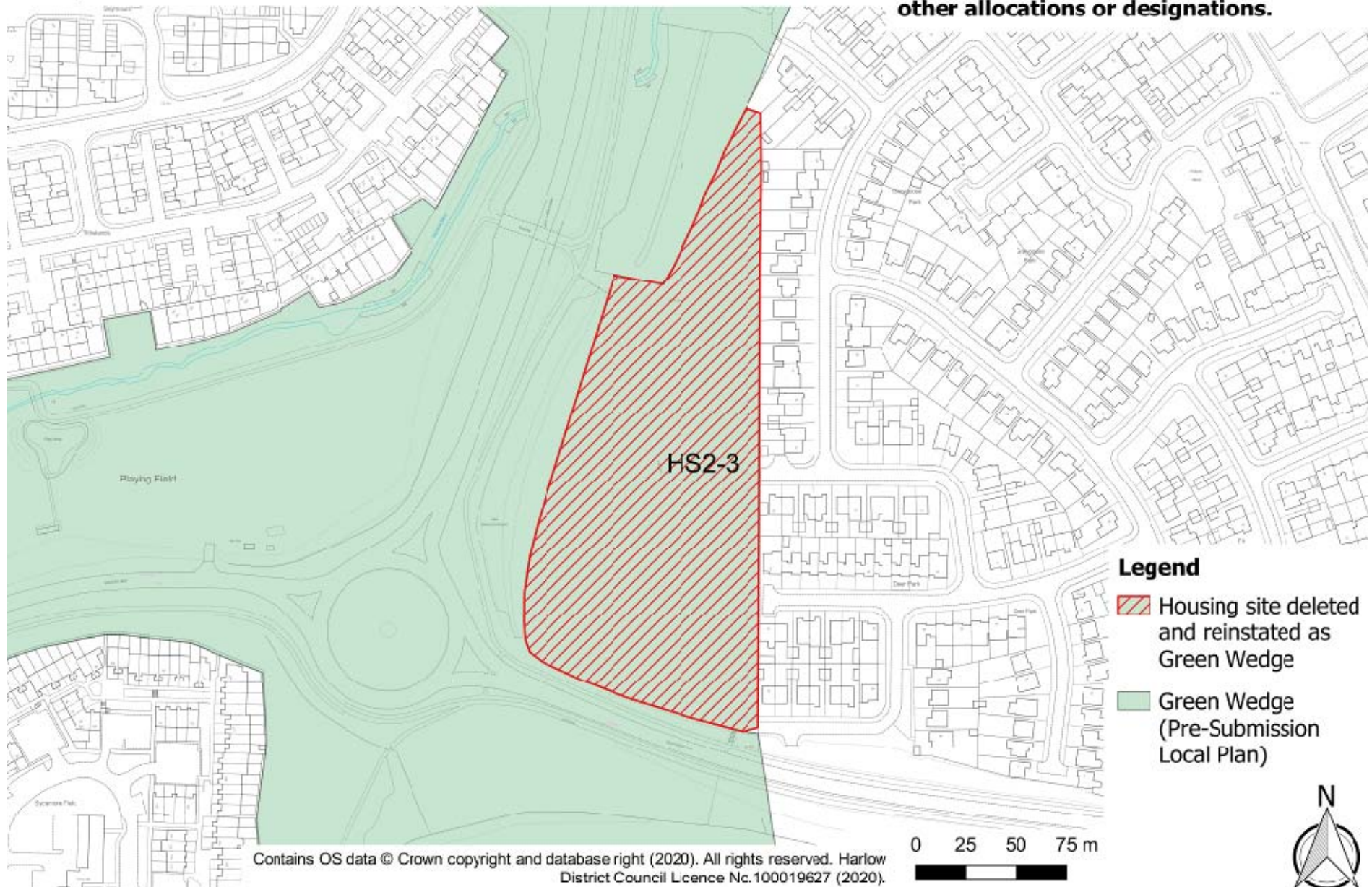
The **Pre-Submission Publication version of the Local Plan and Policies Map** are available on the Council website at [www.harlow.gov.uk](http://www.harlow.gov.uk) or by clicking [here](#) and [here](#), respectively.

Mod No.	Designation	Modification	Map number visualising the change (see Schedule Appendix)
<b>CHAPTER 5</b>			
<b>MM3</b>	Housing	a. Deleted housing site HS2-3 (Land East of Katherines Way, west of Deer Park) and reinstated as Green Wedge	Map 3.a
		b. Deleted housing site HS2-5 (South of Clifton Hatch)	Map 3.b
		c. Deleted housing site HS2-7 (Kingsmoor Recreation Centre)	Map 3.c
		d. Deleted housing site HS2-9 (Land east of 144-154 Fennells) and designated as Green Belt (as per Modification MM6g).  Map 3.d-2 provides increased clarity on the exact new boundary of the Green Belt, which differs slightly from the boundary of the deleted housing site	Map 3.d and Map 3.d-2
		e. Deleted housing site HS2-11 (Land between Second Avenue and St Andrews Meadow) and reinstated as Green Wedge (as per Modification MM7b)	Map 3.e
		f. Deleted housing site HS2-15 (Playground west of 93-100 Jocelyns)	Map 3.f
		g. Amended boundary for housing site HS2-18 (Garage blocks adjacent to Nicholls Tower) to exclude Oak Tree	Map 3.g
		h. Deleted housing site HS2-20 (Land between Barn Mead and Five Acres)	Map 3.h
<b>MM5</b>	Employment	a. Excluded Pearson building from protected employment land designation	Map 5.a

Mod No.	Designation	Modification	Map number visualising the change (see Schedule Appendix)
<b>MM6</b>	Green Belt (site references refer to Examination Document EX0003)	a. Reinstated Green Belt designation to site a.iii	Map 6.a
		b. Reinstated Green Belt designation to site b.ii	Map 6.b
		c. Reinstated Green Belt designation to site f.iv	Map 6.c
		d. Reinstated Green Belt designation to site g.ii	Map 6.d
		e. Reinstated Green Belt designation to site h.i	Map 6.e
		f. Deleted Green Belt designation from the land immediately to the south of Harold's Grove	Map 6.f
		g. Designated Land east of 144-154 Fennells as Green Belt (former housing site HS2-9, deleted as per modification MM3d)	See modification MM3d
<b>MM8</b>	Green Wedge and Green Finger	a. Reinstated Green Wedge designation to Land east of Katherines Way, west of Deer Park (former housing site HS2-3, deleted as per modification MM3a)	See modification MM3a
		b. Reinstated Green Wedge designation to Land between Second Avenue and St. Andrews Meadow (former housing site HS2-11, deleted as per modification MM3e)	See modification MM3e
		c. Included site c.ii in Green Wedge as well as site c.i (site references refer to Examination Document EX0003)	Map 7.c
		d. Designated as Green Finger the open land along the western boundary of Gilden Park, the west-east linear park within the site layout and the informal open space to the east of Old Road	Map 7.d
<b>MM13</b>	Sustainable Transport Corridor	a. Amended route of indicative Sustainable Transport Corridor	Map 11.a

**Map 3.a: Deleted housing site HS2-3 and reinstated as Green Wedge**

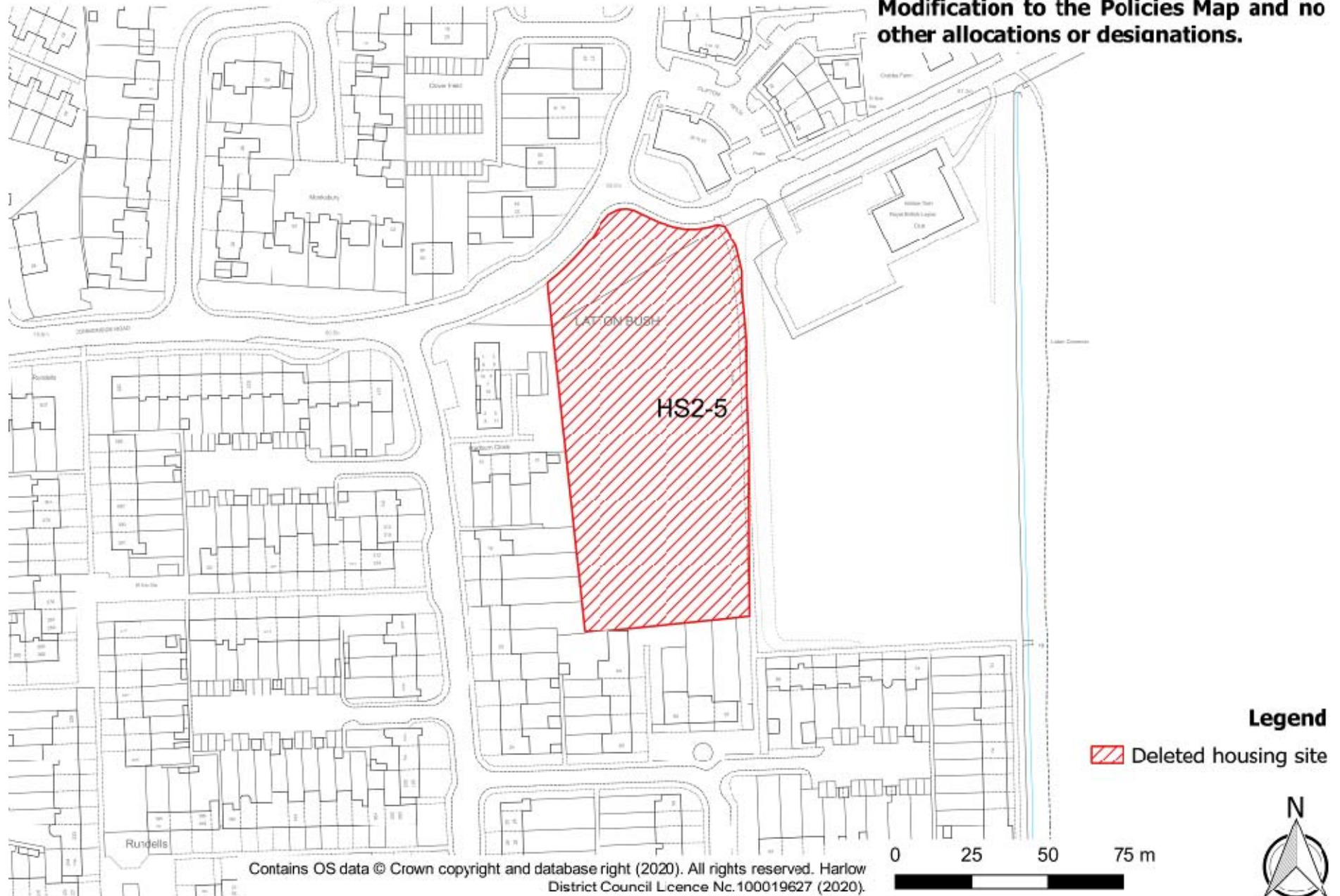
**Note: This map only shows the relevant Modification to the Policies Map and no other allocations or designations.**





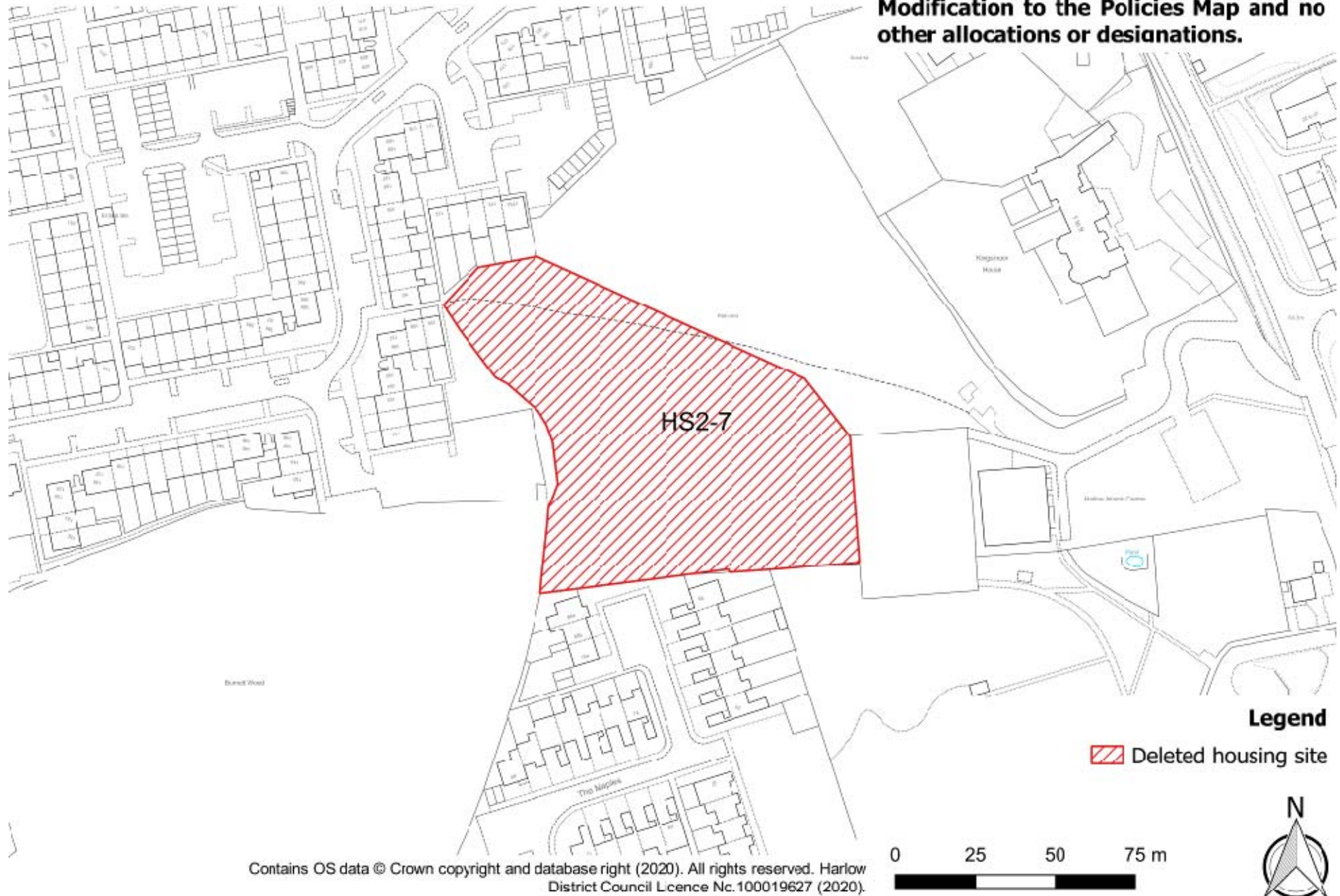
**Map 3.b: Deleted housing site HS2-5**

**Note: This map only shows the relevant Modification to the Policies Map and no other allocations or designations.**



**Map 3.c: Deleted housing site HS2-7**

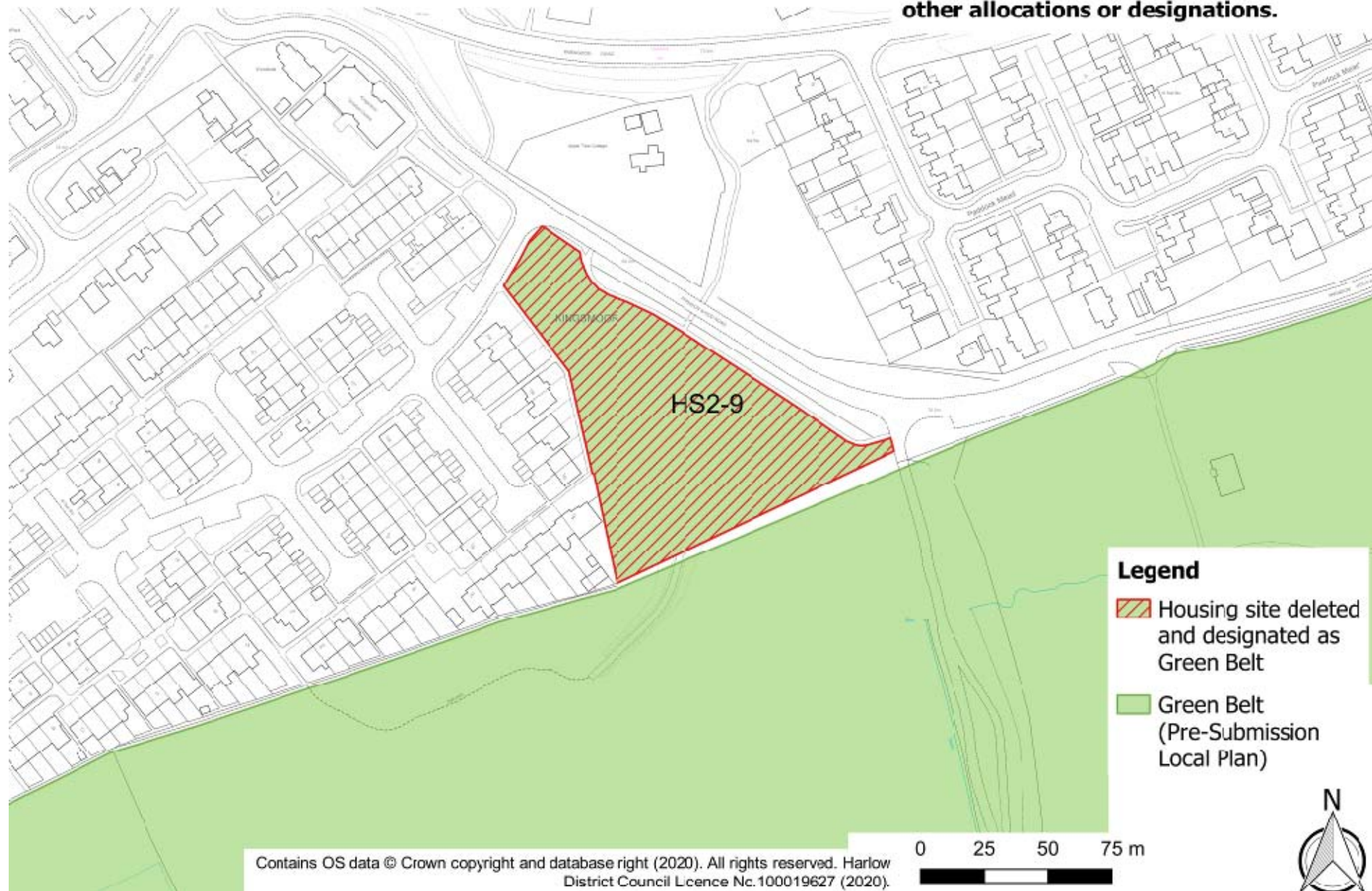
**Note: This map only shows the relevant Modification to the Policies Map and no other allocations or designations.**





**Map 3.d: Deleted housing site HS2-9 and designated as Green Belt**

**Note: This map only shows the relevant Modification to the Policies Map and no other allocations or designations.**



**Map 3.d-2: New Green Belt boundary in the Fennells area following deletion of housing site HS2-9**

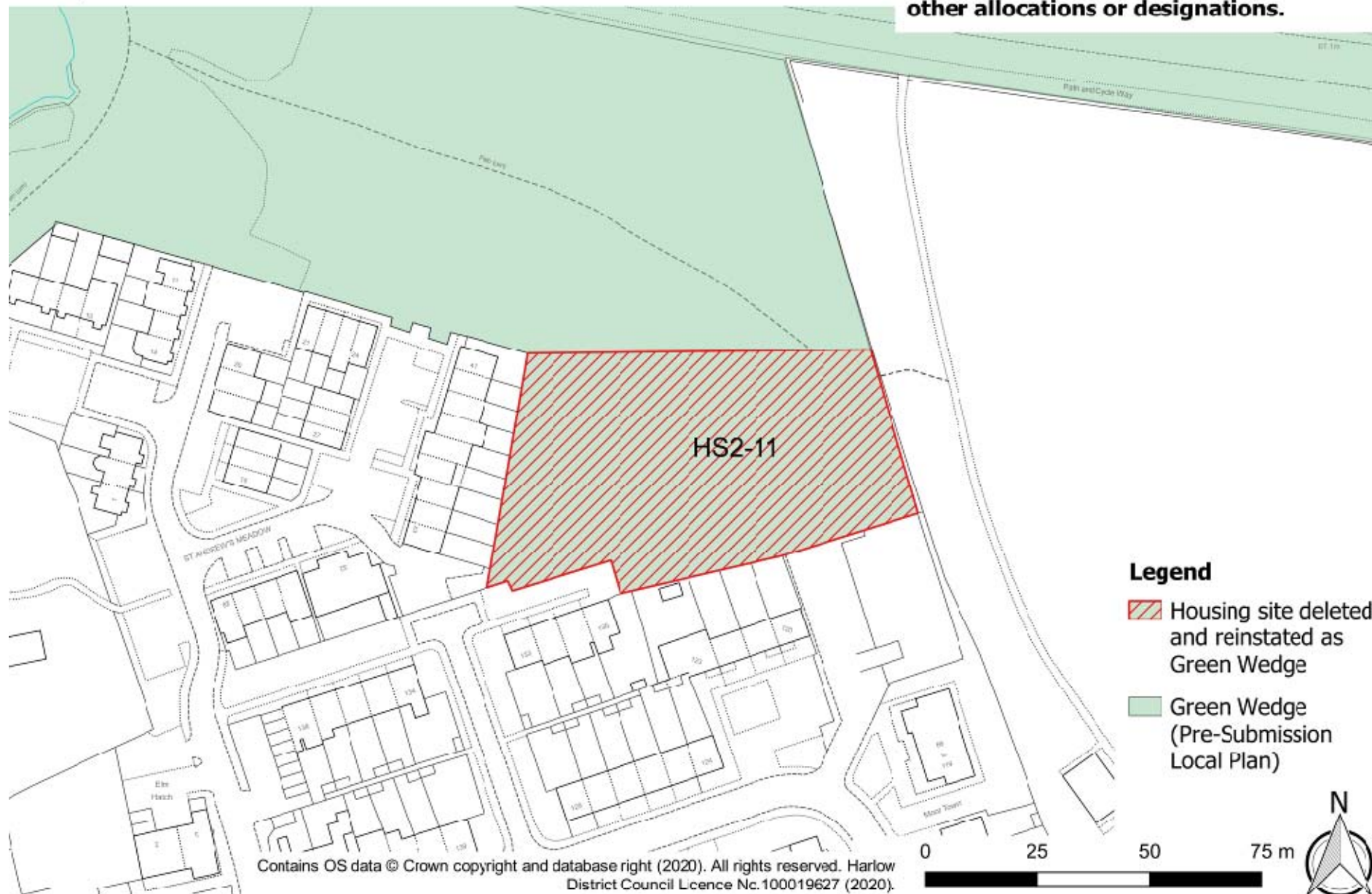
**Note: This map only shows the relevant Modification to the Policies Map and no other allocations or designations.**





**Map 3.e: Deleted housing site HS2-11 and reinstated as Green Wedge**

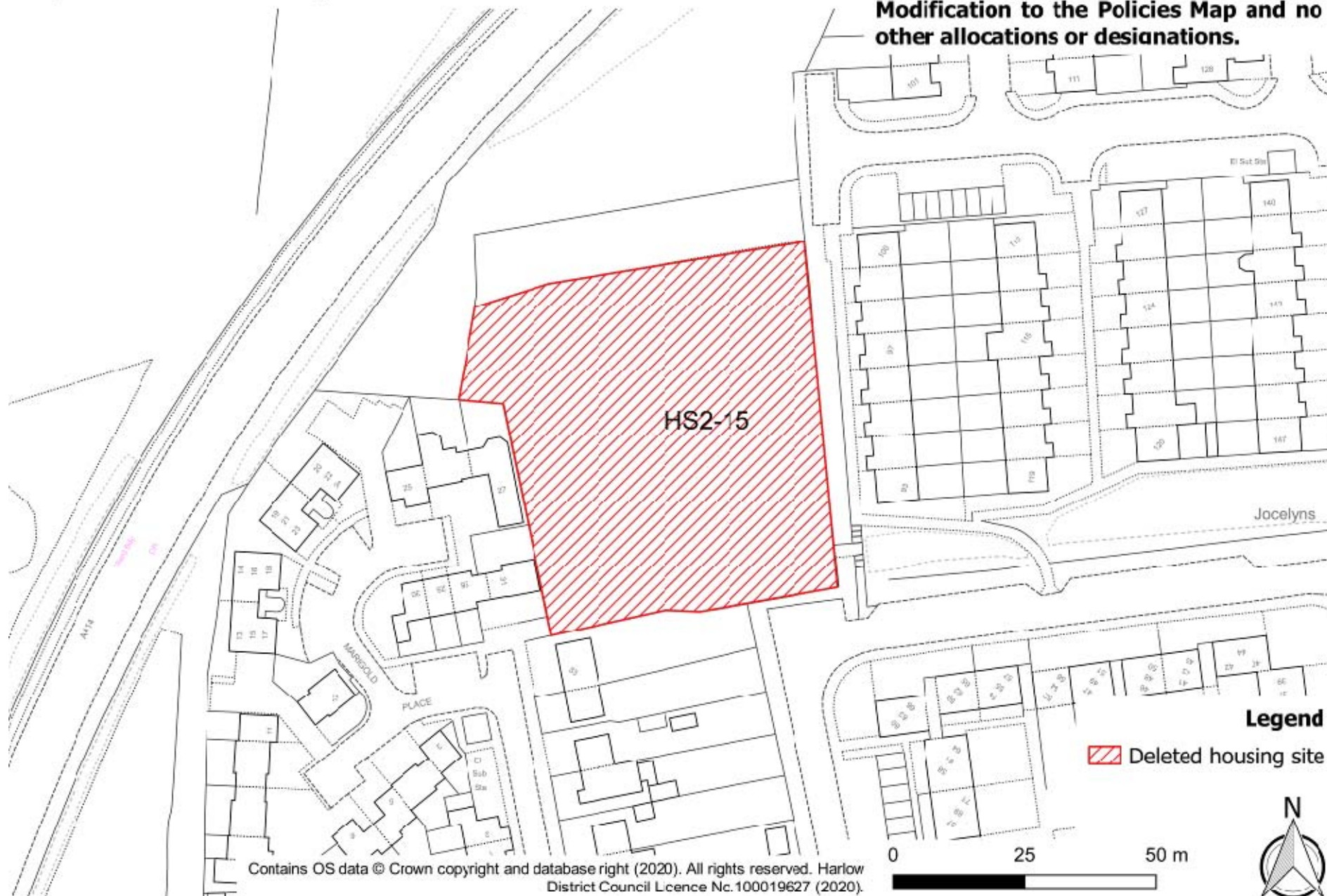
**Note: This map only shows the relevant Modification to the Policies Map and no other allocations or designations.**





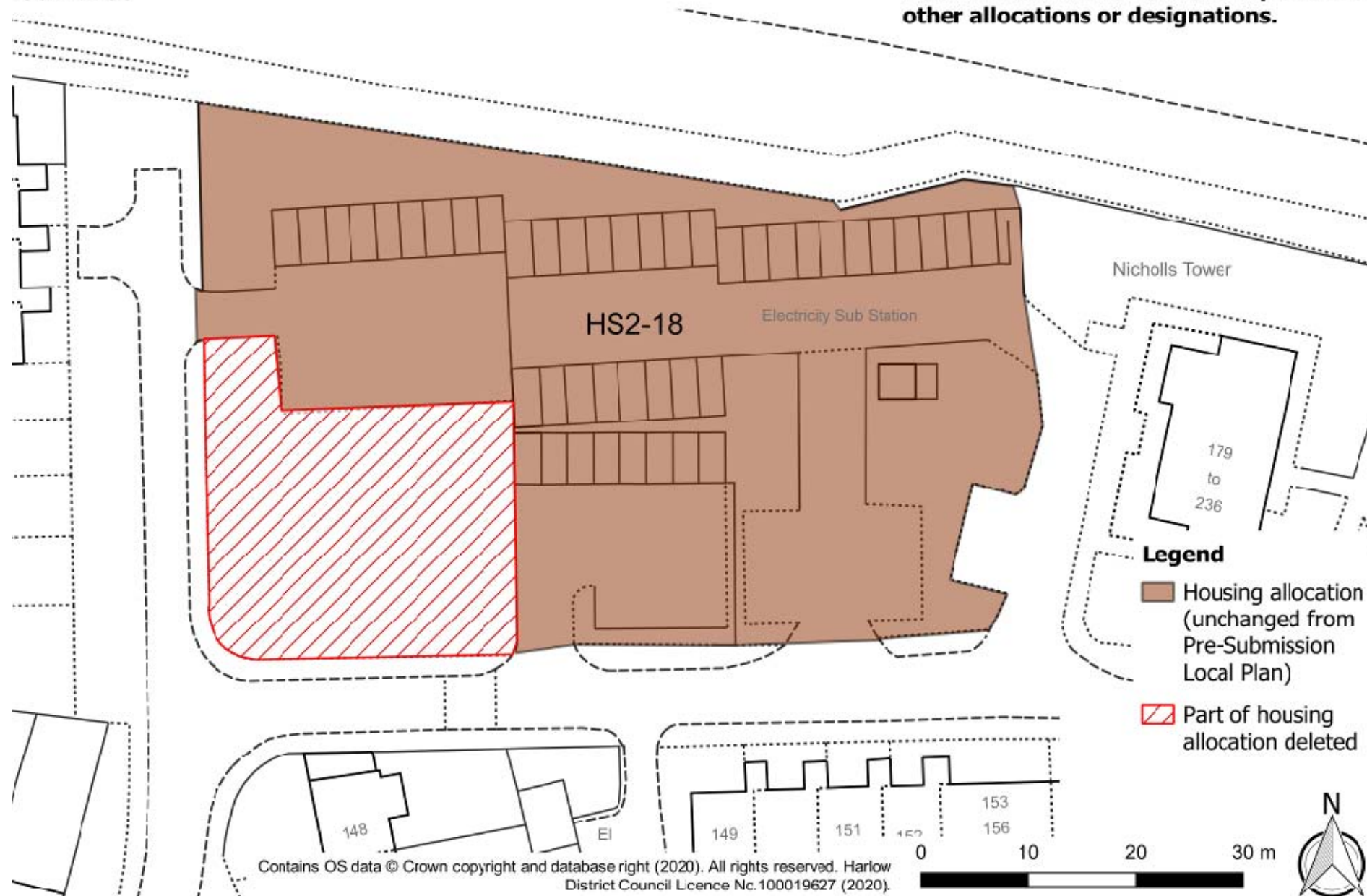
**Map 3.f: Deleted housing site HS2-15**

**Note: This map only shows the relevant Modification to the Policies Map and no other allocations or designations.**



**Map 3.g: Amended boundary for housing site HS2-18 to exclude Oak Tree**

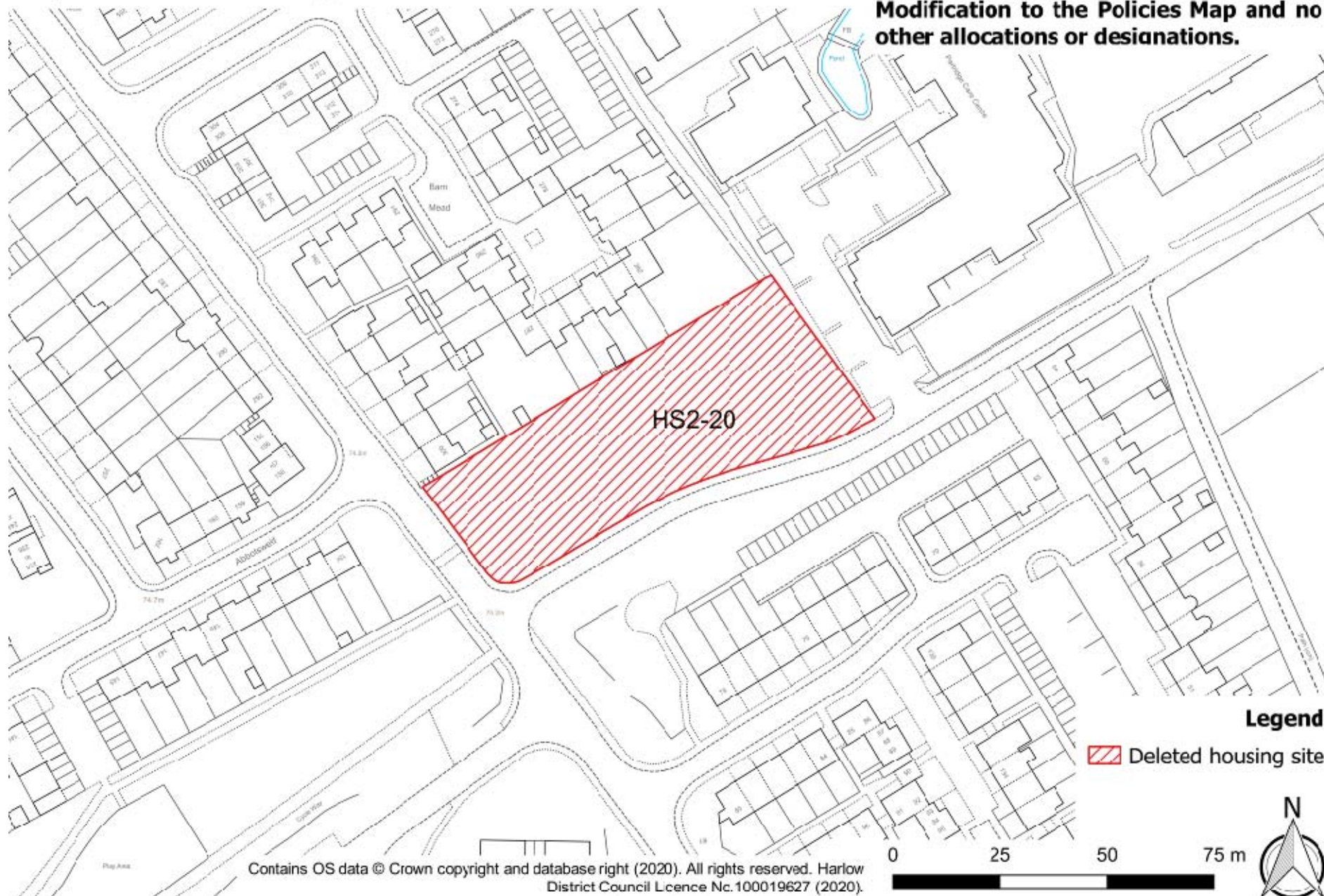
**Note: This map only shows the relevant Modification to the Policies Map and no other allocations or designations.**





**Map 3.h: Deleted housing site HS2-20**

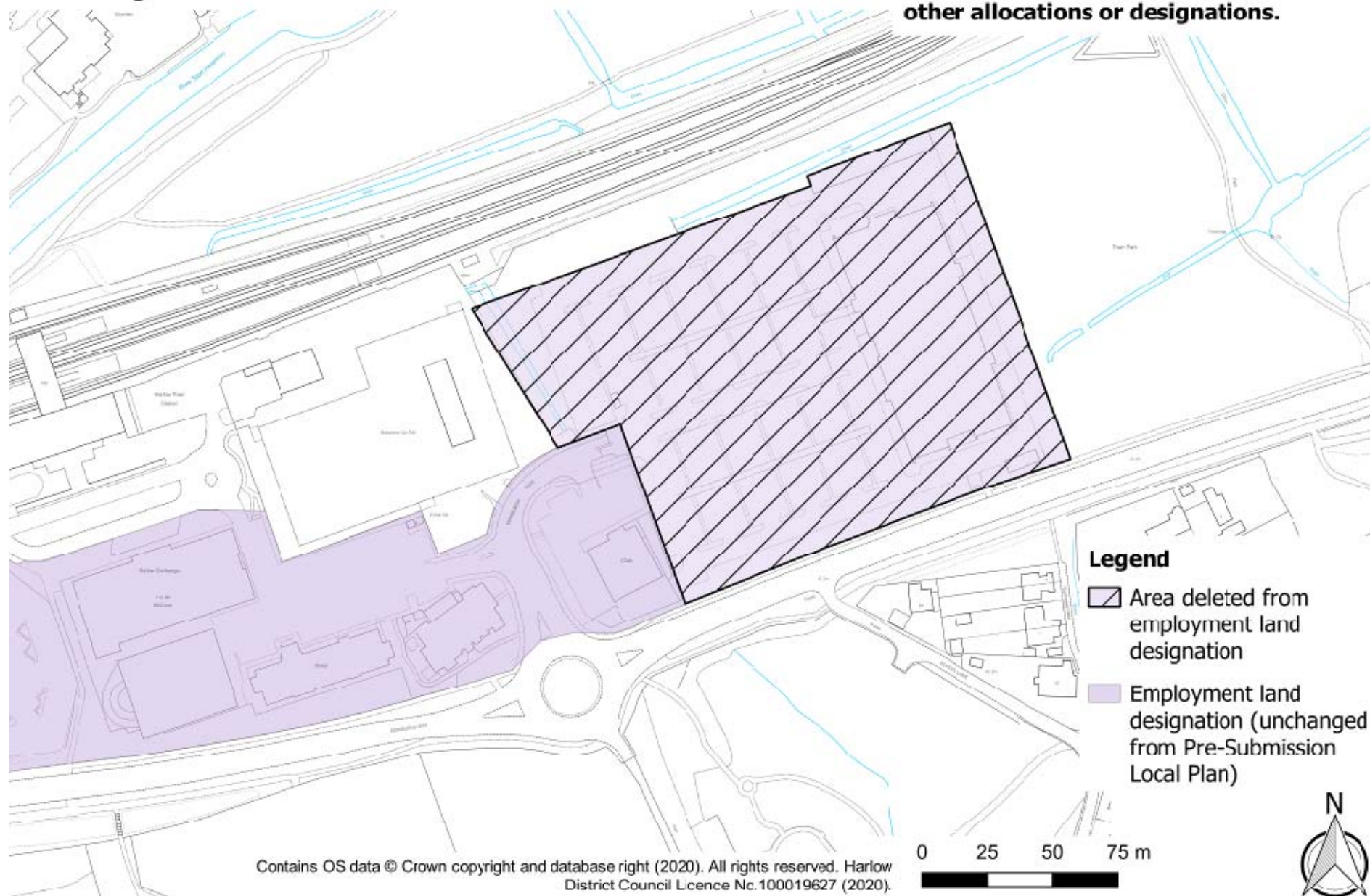
**Note: This map only shows the relevant Modification to the Policies Map and no other allocations or designations.**





**Map 5.a: Excluded Pearson building from protected employment land designation**

**Note: This map only shows the relevant Modification to the Policies Map and no other allocations or designations.**

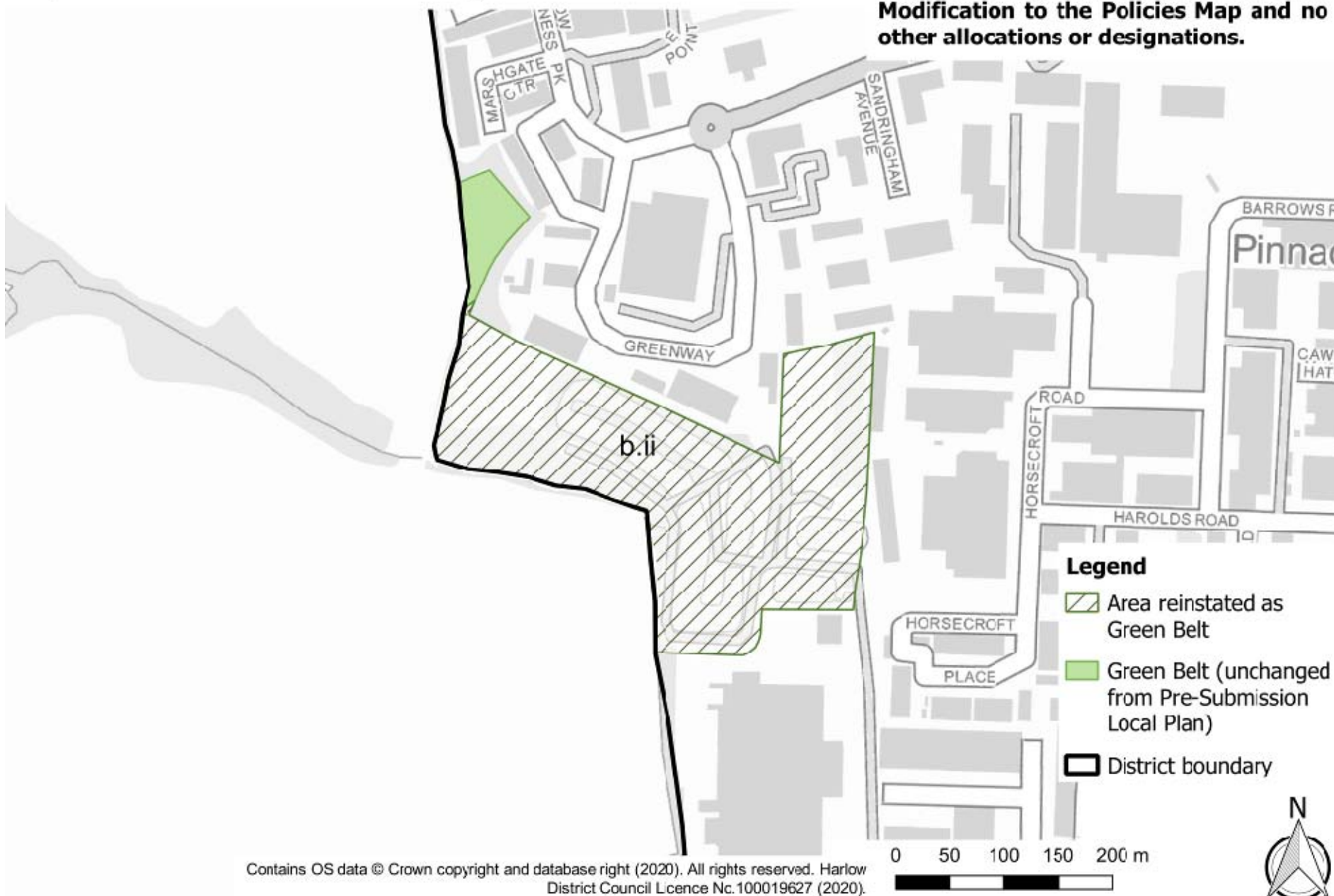






**Map 6.b: Reinstated Green Belt designation to site b.ii**

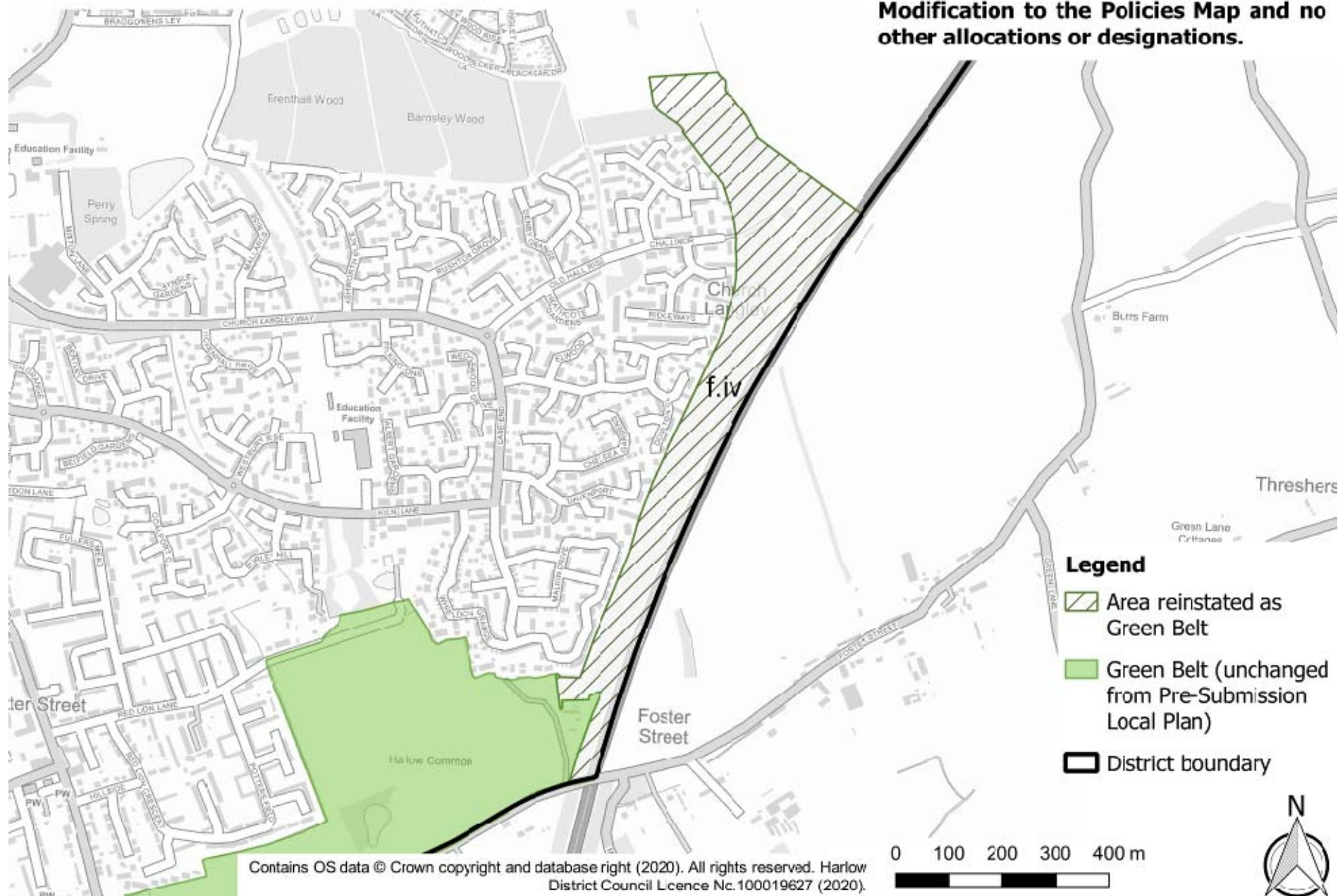
**Note: This map only shows the relevant Modification to the Policies Map and no other allocations or designations.**





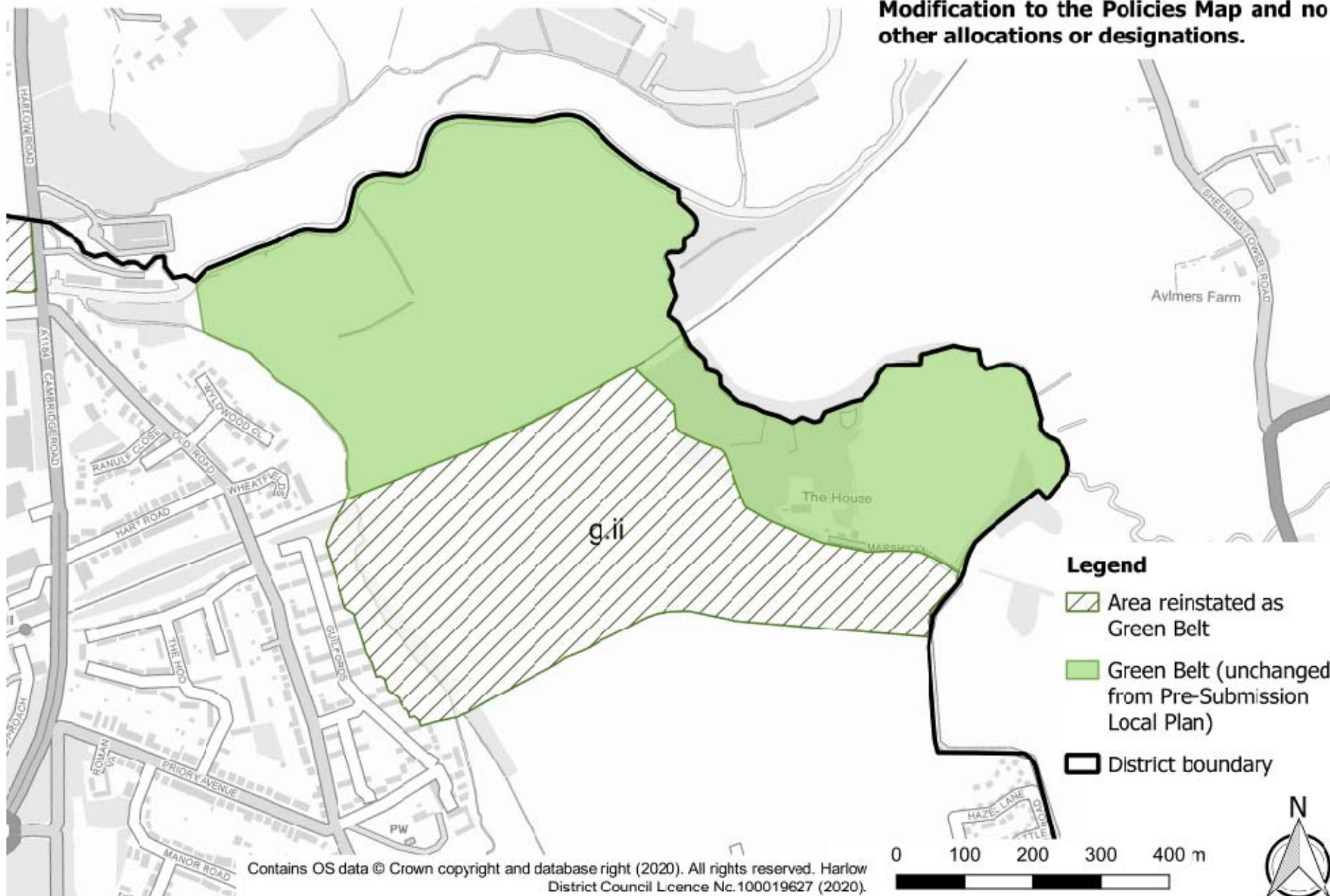
**Map 6.c: Reinstated Green Belt designation to site f.iv**

**Note: This map only shows the relevant Modification to the Policies Map and no other allocations or designations.**



**Map 6.d: Reinstated Green Belt designation to site g.ii**

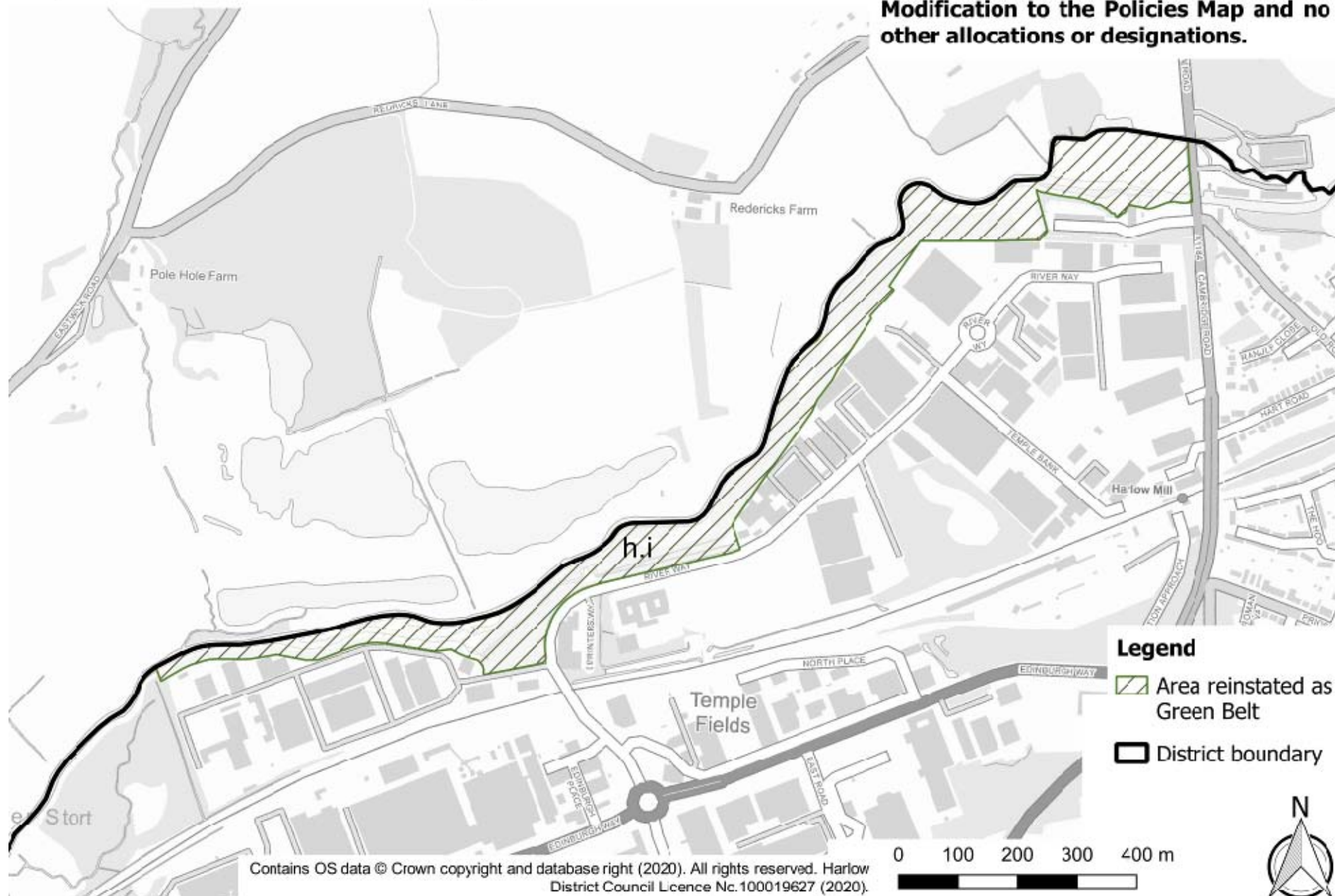
**Note: This map only shows the relevant Modification to the Policies Map and no other allocations or designations.**





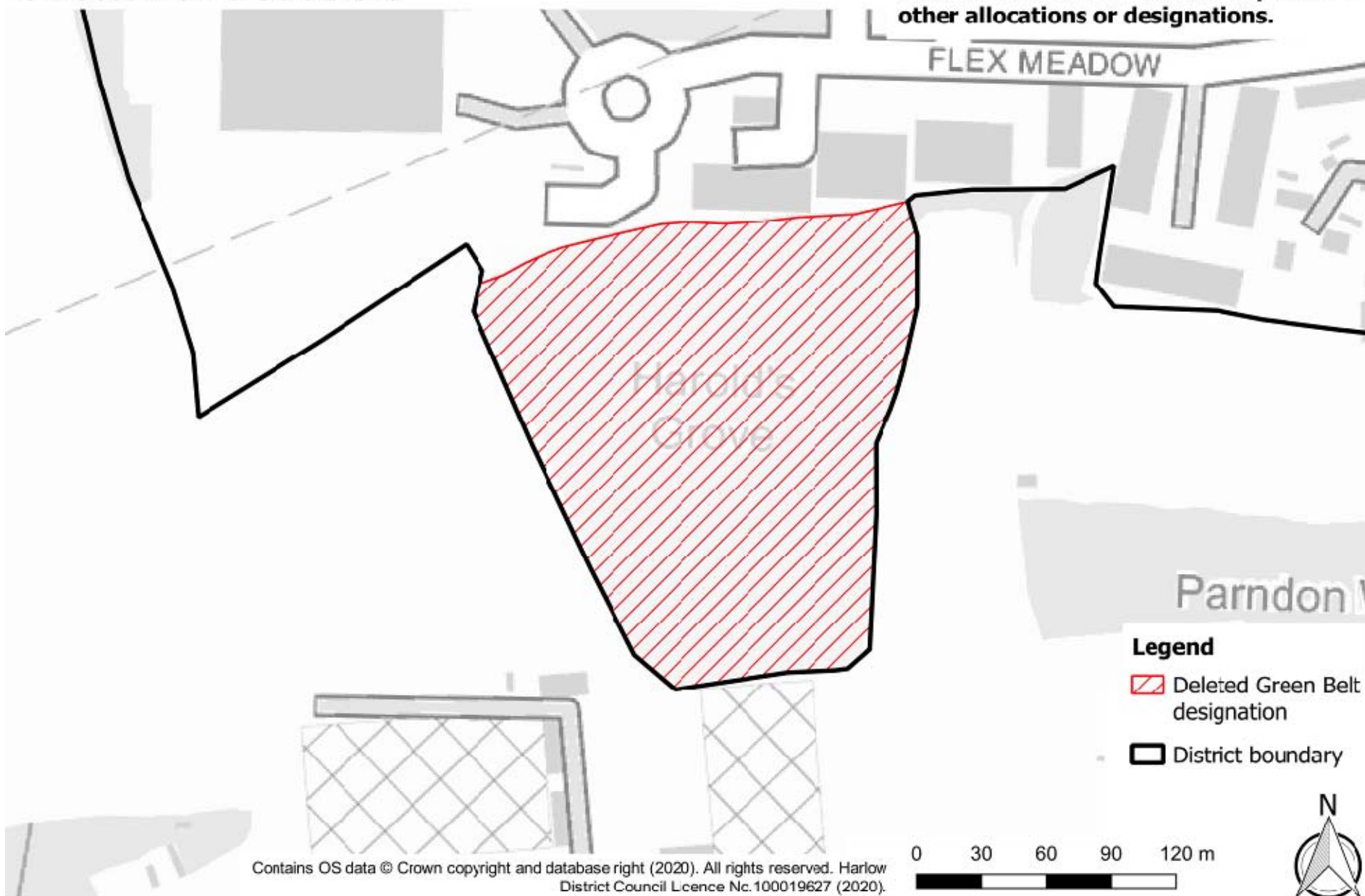
**Map 6.e: Reinstated Green Belt designation to site h.i**

**Note: This map only shows the relevant Modification to the Policies Map and no other allocations or designations.**



**Map 6.f: Deleted Green Belt designation from the land immediately to the south of Harold's Grove**

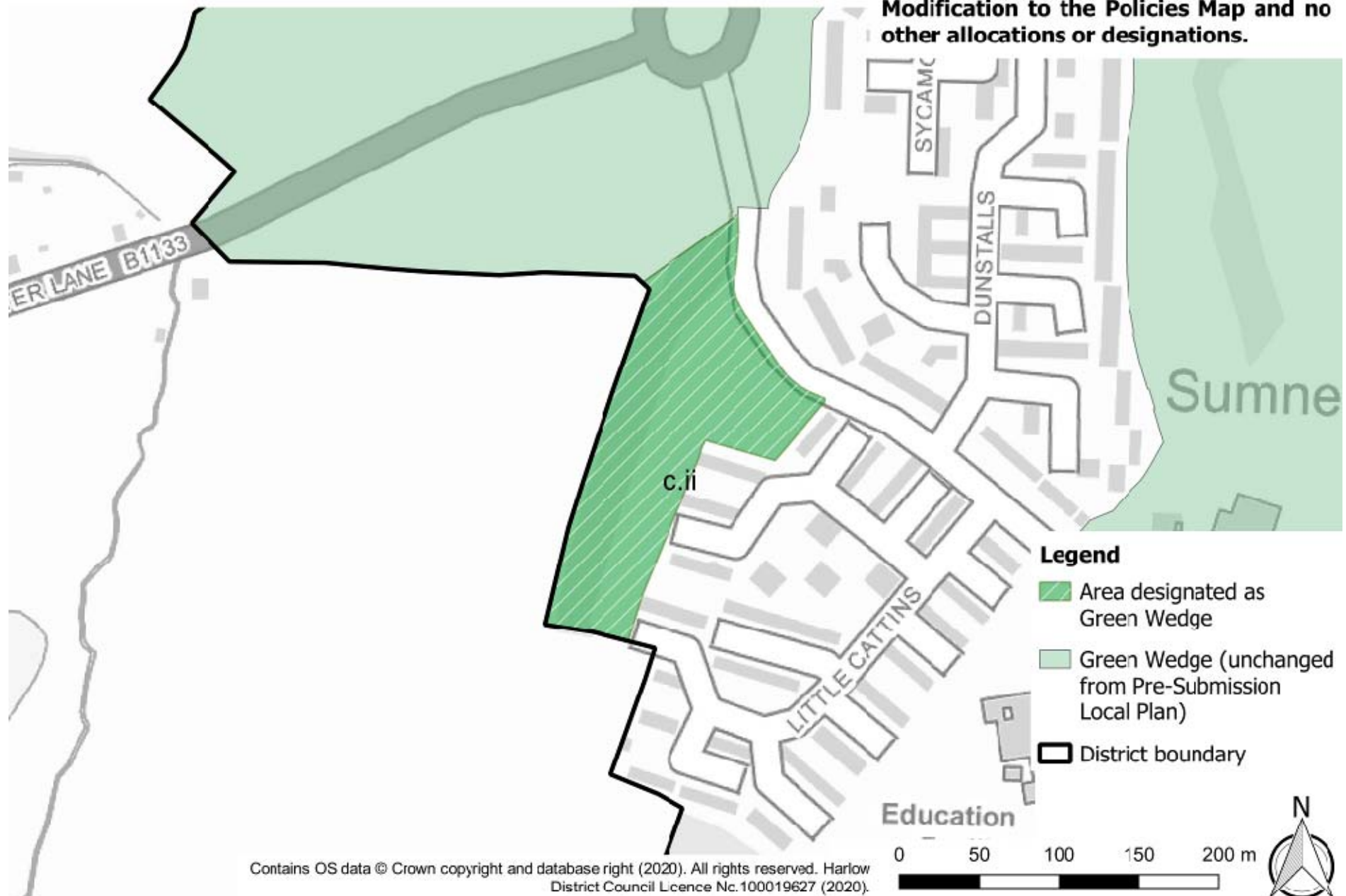
**Note: This map only shows the relevant Modification to the Policies Map and no other allocations or designations.**





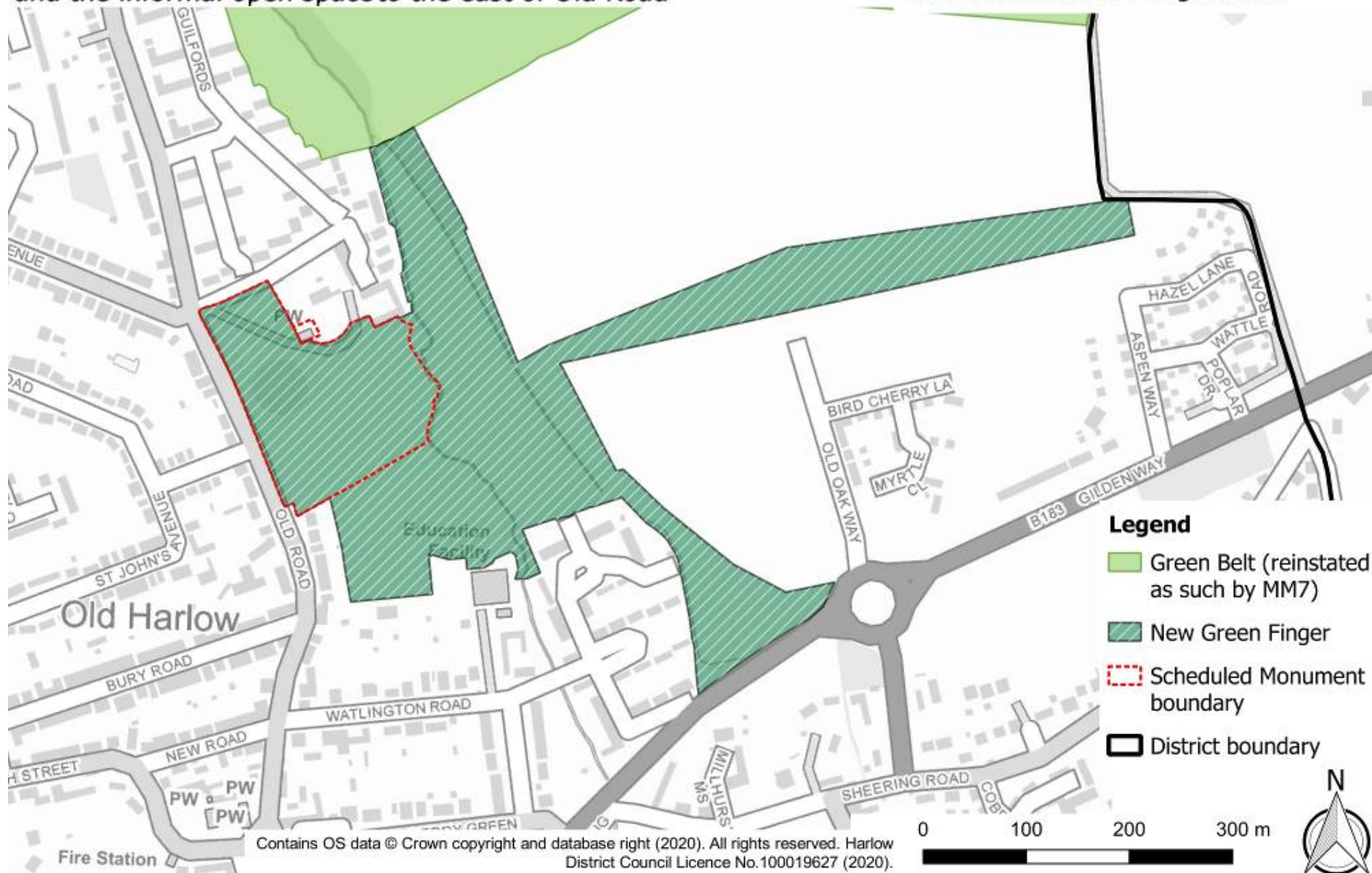
**Map 7.c: Designated site c.ii as Green Wedge**

**Note:** This map only shows the relevant Modification to the Policies Map and no other allocations or designations.



**Map 7.d: Designated as Green Finger the open land along the western boundary of Gilden Park, plus linear park within the site and the informal open space to the east of Old Road**

**Note: This map only shows the relevant Modification to the Policies Map and no other allocations or designations.**





**Map 11.a: Amended route of indicative Sustainable Transport Corridor**

**Note: This map only shows the relevant Modification to the Policies Map and no other allocations or designations.**

