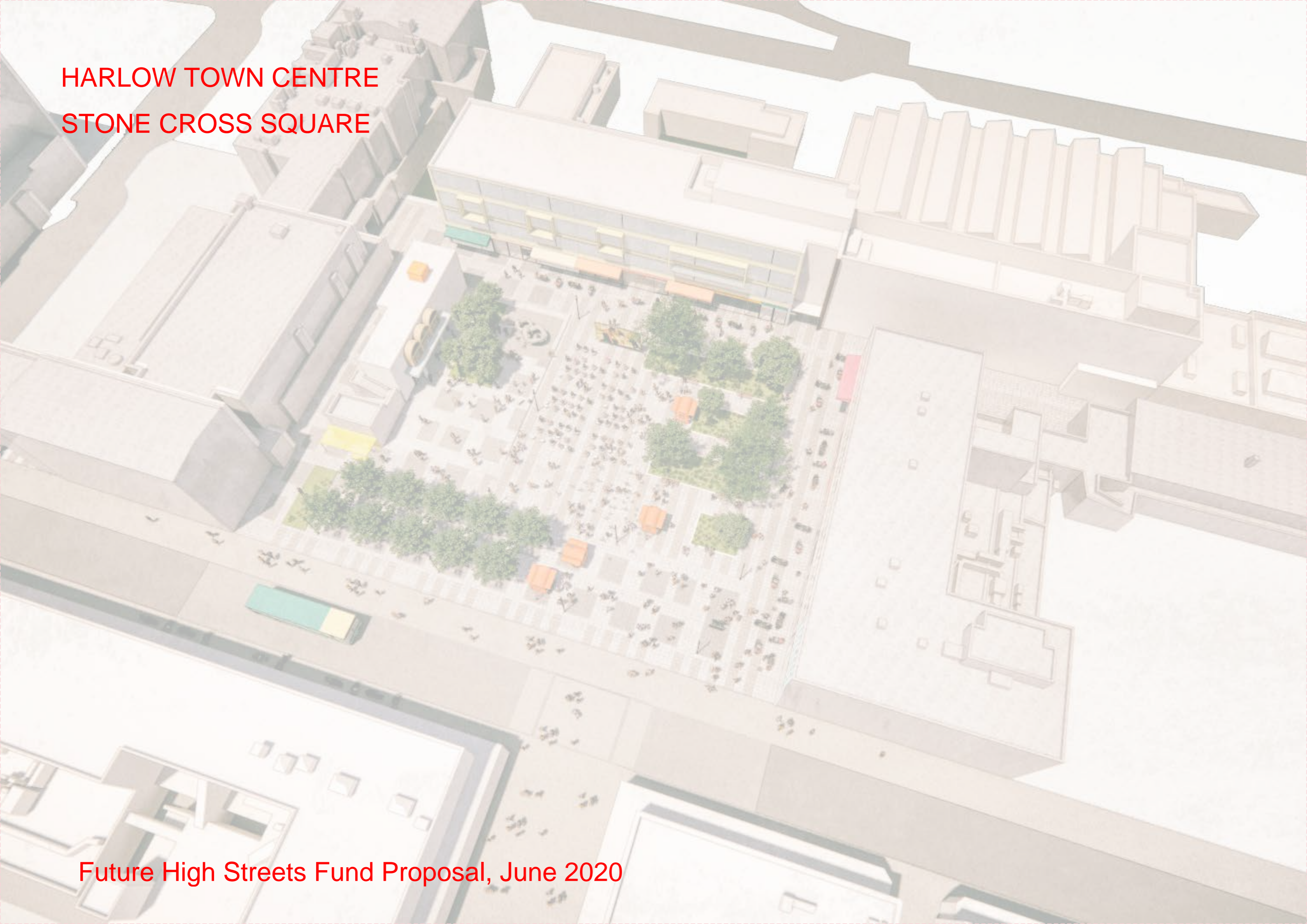


HARLOW TOWN CENTRE  
STONE CROSS SQUARE





# Stone Cross Square

## The Original Design 1955

"Work on the new town began in April 1950 on the town centre roads and the market square area, where the first shops opened in December 1955."

"...A market, opened in 1956, is held in the market square."



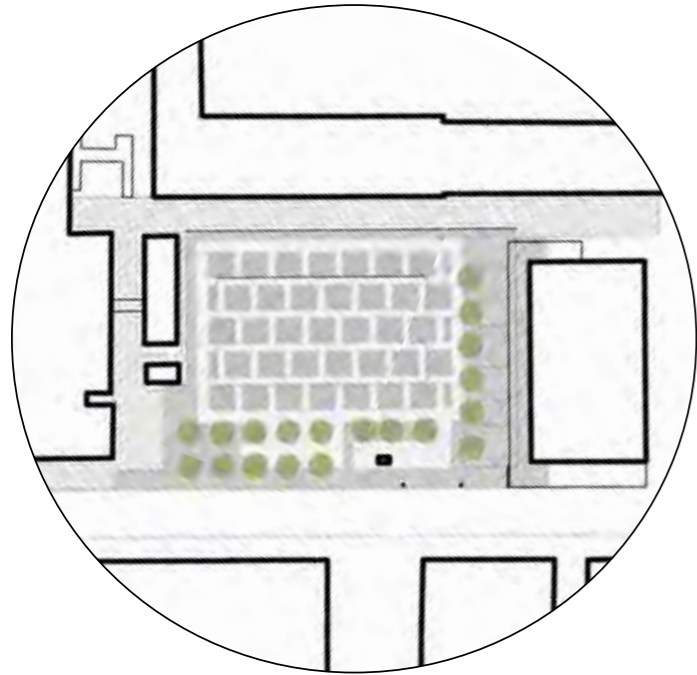
Notable examples of modernist architecture in Market Square



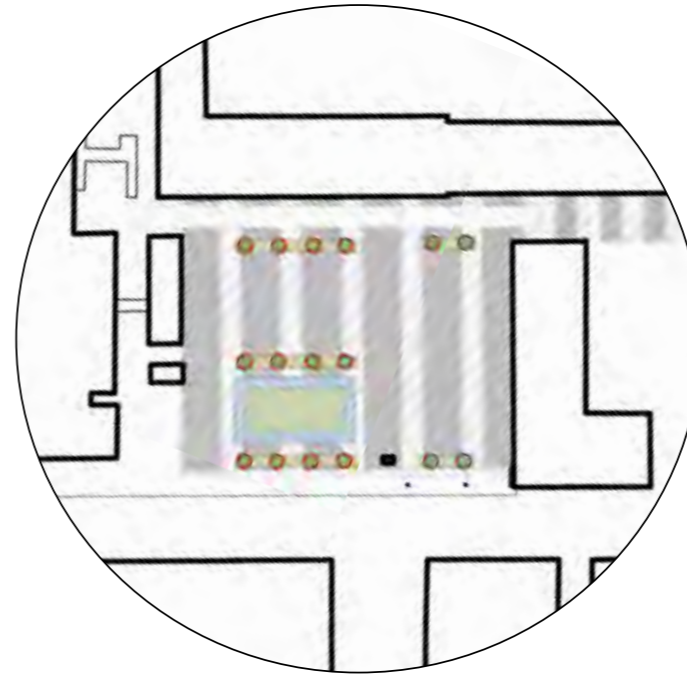


# Stone Cross Square

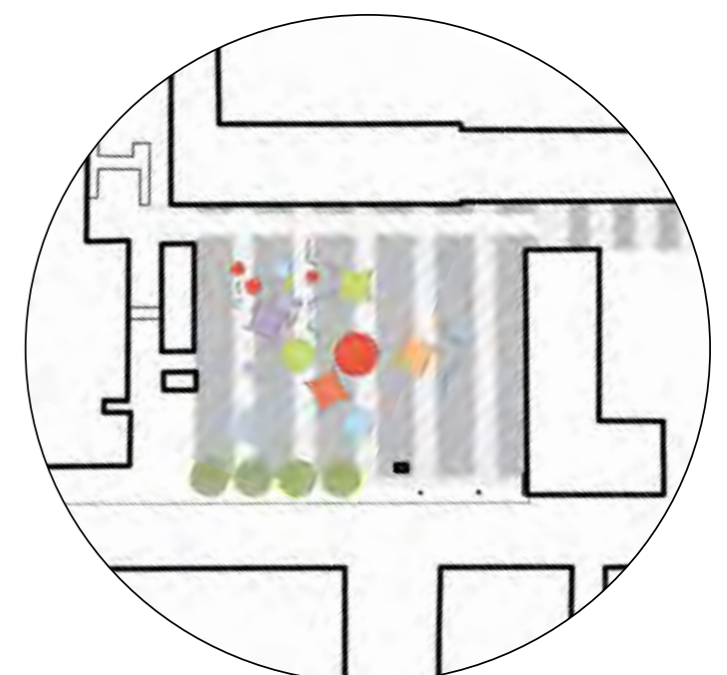
Changes Over Time



1955



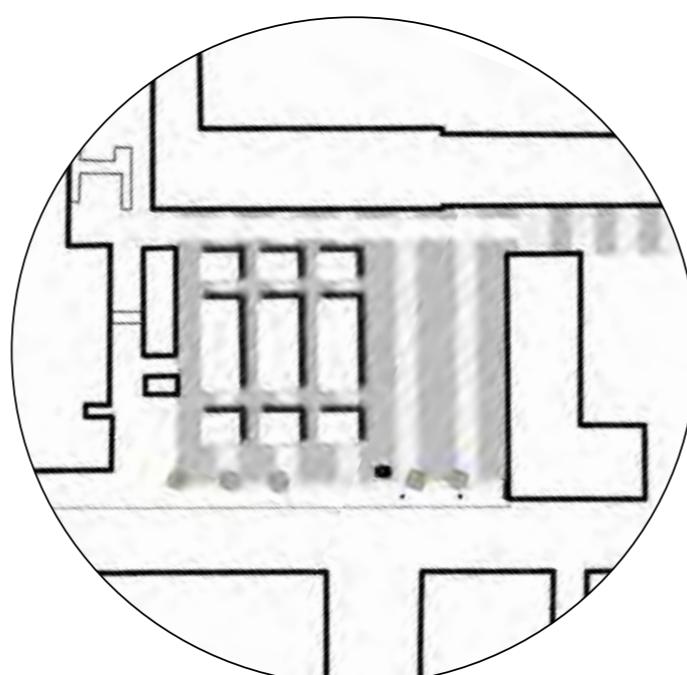
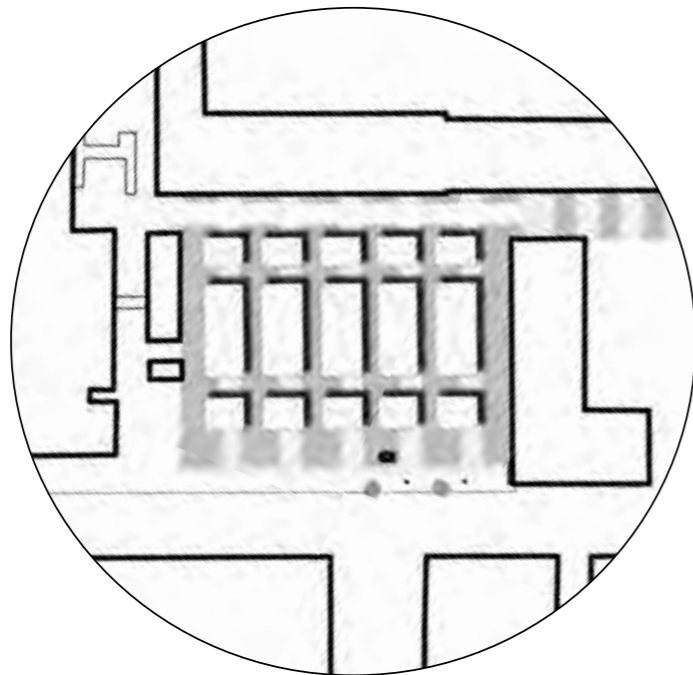
2013



2018

1980s

2006





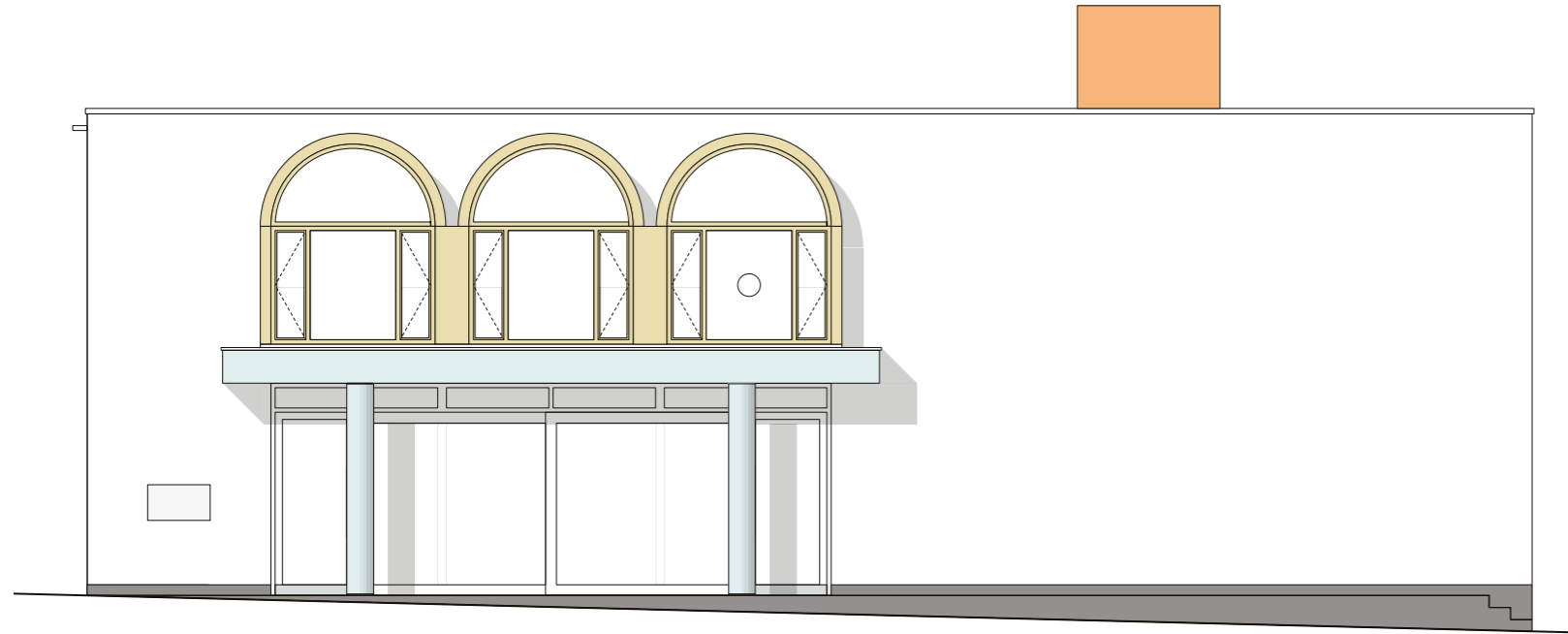
# Stone Cross Square Changes Over Time





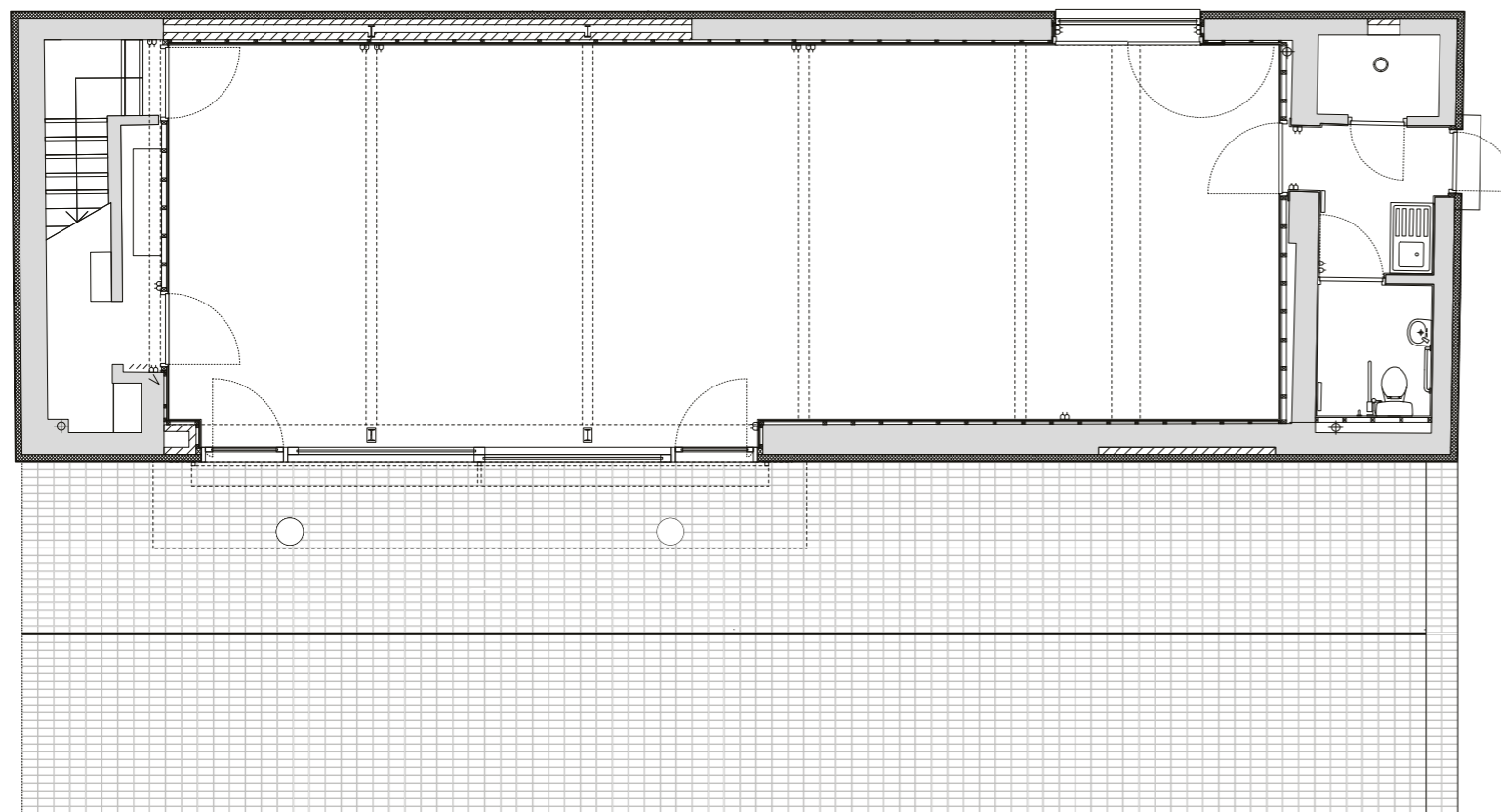
# Stone Cross Square

## 21 The Rows



Front Elevation

- Convert existing disused building into a new Community Centre
- New portico and windows facing onto Stone Cross Square



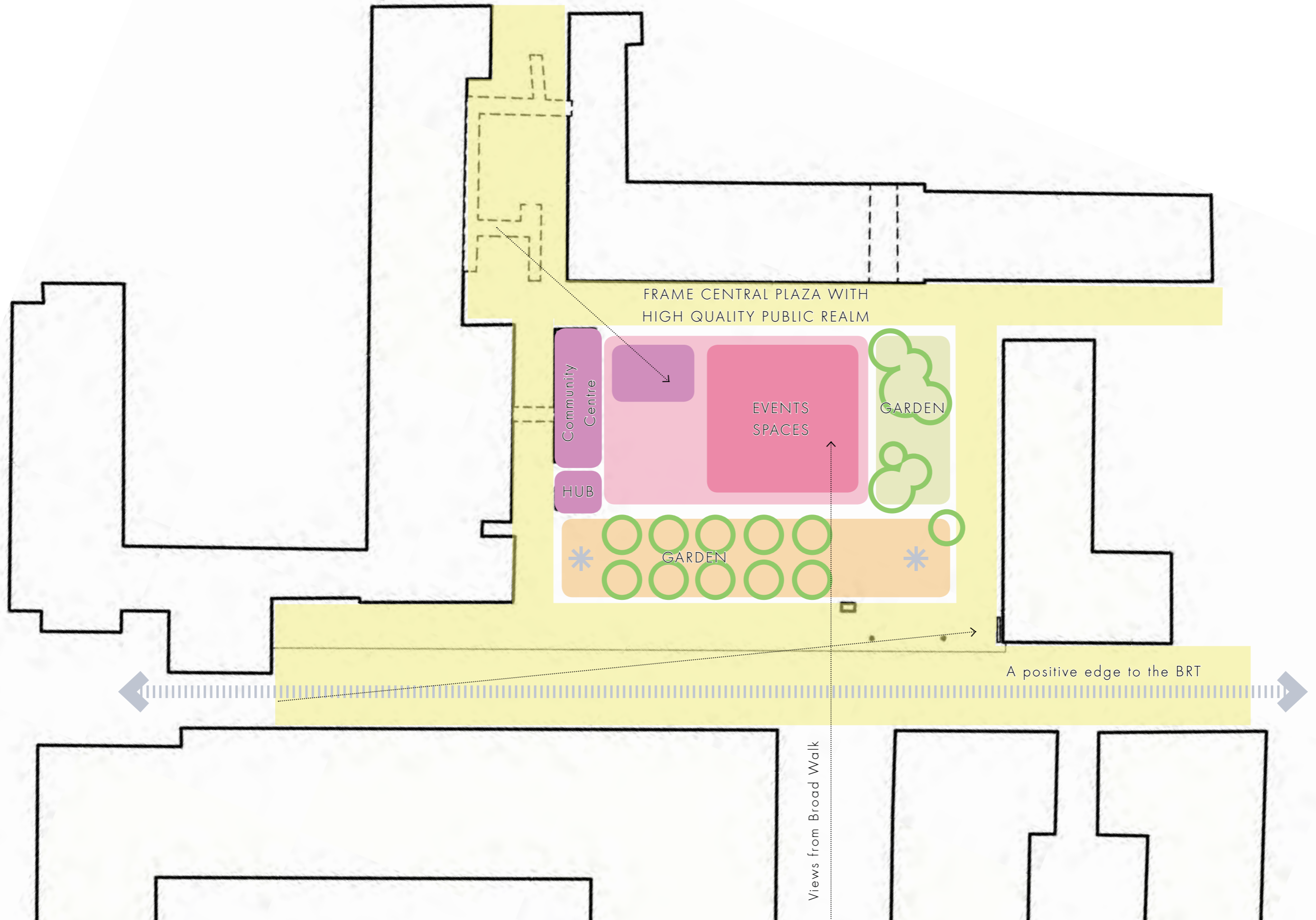
Ground Floor Plan



Position on Stone Cross Square

# Stone Cross Square

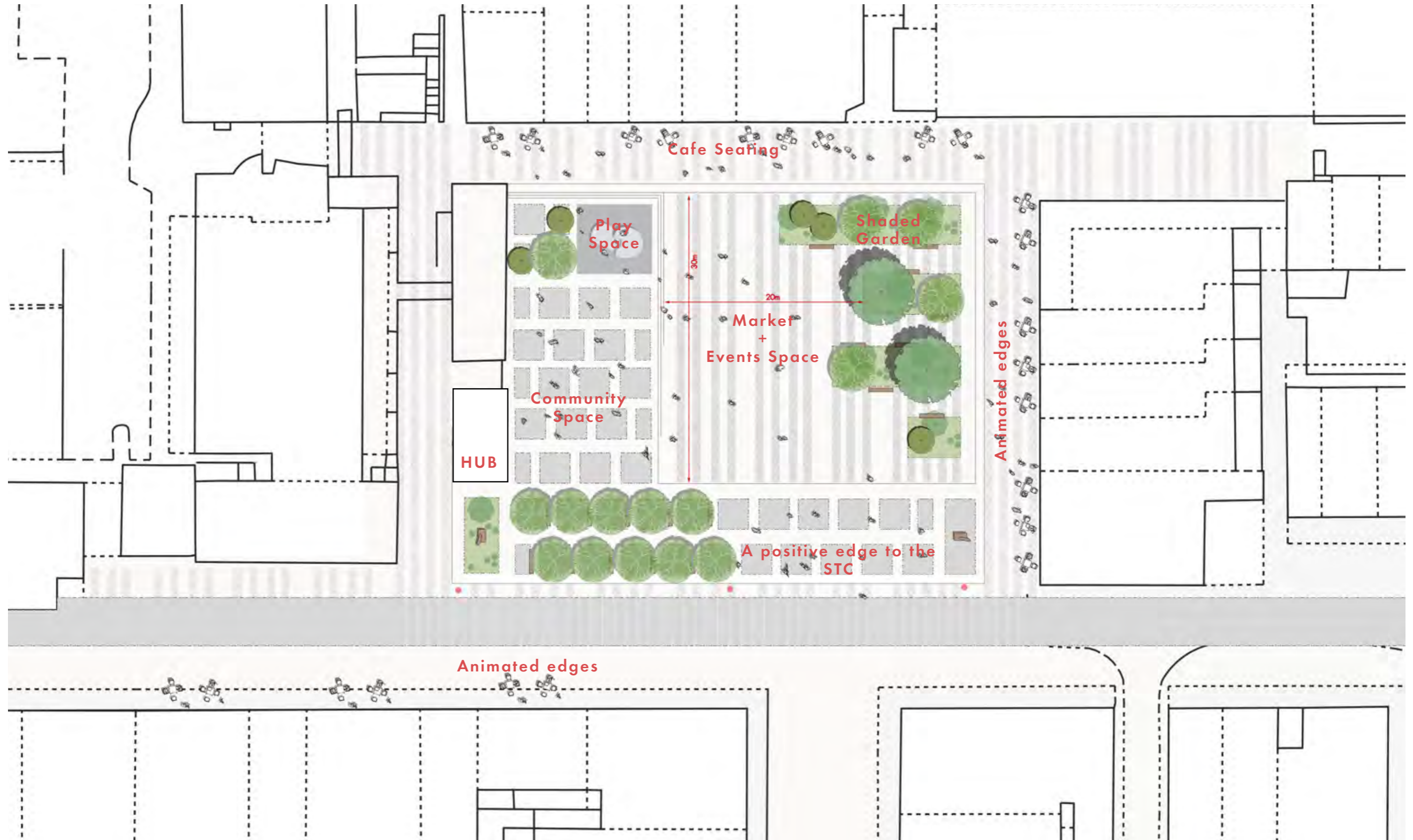
Functional diagram





# Stone Cross Square

## Site Plan



Stone Cross Square  
Aerial View





# Stone Cross Square

Aerial View



North



# Stone Cross Square

## Seasonal Events and Activities Calendar



**Weekly market**



**Community Events**



**Makers Market**



**Outdoor eating and drinking**



**Christmas lights and market**



**Installations**



**Outdoor cinema**



**Harlow Carnival End of Show**



**Black History Multicultural festival**



**Outdoor performances**



# Stone Cross Square Cycle Hub

Cycle Maintenance  
Covered Cycle Parking  
Electric Cycle Charging

