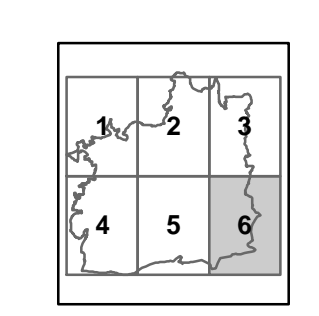


S:\Planning\Jonathan\W\Harlow\9_311006001_A0_4.mxd

A GREEN INFRASTRUCTURE PLAN FOR THE HARLOW AREA

Notes:
For illustrative purposes only - see section 3.4 for details
See Appendix A in Volume 1 Report for list of data sources

THE GREEN INFRASTRUCTURE NETWORK
IS CONCEPTUAL IN NATURE AND THIS
MAP IS ONLY INDICATIVE



0 250 500 m
Scale 1:10,000 at A0
See separate sheet for key

The Green Infrastructure Network involves the creation, protection and enhancement of the following multi-functional green spaces and links:

- Strategic Parks –major areas of multi-functional public green space

New Strategic Park
The Stort Riverpark

Existing Strategic Parks
Epping Forest
Hatfield Forest Country Park
Lee Valley Regional Park
- Local Green Space Parks –locally significant areas of multi-functional public green space
- Core Natural Green Spaces –designated sites of nature conservation

Heritage Landscapes –areas targeted for integrated conservation management (NB. these are not designations)

- Ancient Landscapes

1. Hatfield Forest

2. Waltham Abbey and Environs

3. Epping Forest Fringe

4. Ongar Park and Woodlands

5. Nazeing and Rye Hill
- Historic Parklands

1. North of River Stort

2. Down Hall

3. West of Hoddesdon

4. Epping Forest Fringe
- Historic Airfields

1. Allen's Green

2. Hunsdon

3. North Weald
- Stort Valley Historic Landscapes

Strategic Destinations and Gateways –focal points of recreational activity and access to the countryside

Major Strategic Destinations and Gateways

- 1

Hatfield Forest Country Park
- 2

Parndon Wood Nature Reserve
- 3

Harlow Town Park
- 4

Clayton Hill Country Park
- 5

River Lee Country Park
- 6

Waltham Abbey

Key Strategic Destinations and Gateways

- 1

Gibberd's Garden
- 2

Eastwick Medieval Settlement Site
- 3

Epping Green / Rye Hill
- 4

Roydon Mill
- 5

Chesthunt Station
- 6

Broxbourne / Keyzers Estate
- 7

Dobb's Weir / Nazeing Mead
- 8

Rye House
- 9

Amwell Nature Reserve
- 10

Pishiobury Park

New Strategic Destinations and Gateways

- 1

Gilston Park Area
- 2

Copped Hall Area
- 3

Wintry Wood to Beachet Wood

1 Greenways –linear habitats incorporating shared use paths

1. Waltham Abbey / River Lee Country Park to Ware (via Lee Valley)

2. Broxbourne Woodland Complex to Clayton Hill Country Park

3. Roydon via Harlow Town Park to Bishop's Stortford (via Stort Valley)

4. Lower Nazeing / Clayton Hill Country Park to Latton Bush

5. Roydon via Nazeing Common to Epping Forest

6. Parndon Wood Nature Reserve / Kingsmoor to Epping

7. North Weald Bassett / Epping to Epping Forest

8. North Weald Bassett to Hatfield Forest Country Park

9. East Harlow to Matching Green

10. Sawbridgeworth to Hatfield Forest Country Park

11. Gilston to Bishop's Stortford

12. Waltham Abbey via Cobbin's Brook to Thornwood Common

13. West Harlow to Lee Valley

14. South Harlow to Rye Hill

15. North Harlow to River Stort

16. North West Harlow to River Stort

17. River Stort to Church Langley

18. Greenway 11 to Sawbridgeworth

- Existing Rights of Way
- Sustrans Cycle Route

Riverways –multi-functional corridors and sequences of spaces and places

- River Lee Navigation
- River Stort Navigation

New Urban Landscapes of Distinction –urban gateways targeted for environmental design improvements

- 1

Harlow Rail Station/Town Park
- 2

West Harlow
- 3

East Harlow/New Hall
- 4

South East Harlow/M11 Approach

Parkways –road transport corridors targeted for environmental design improvements

M25
M11
A10
A414
A1184

Railways –key rail transport corridors and stations targeted for environmental design improvements

WAGN Railway and Stations
London Underground Central Line and Epping Station

Notes :


For illustrative purposes only - see section 3.4 for details

See Appendix A in Volume 1 Report for list of data sources

Key for 1:10,000 scale Green Infrastructure Network Maps

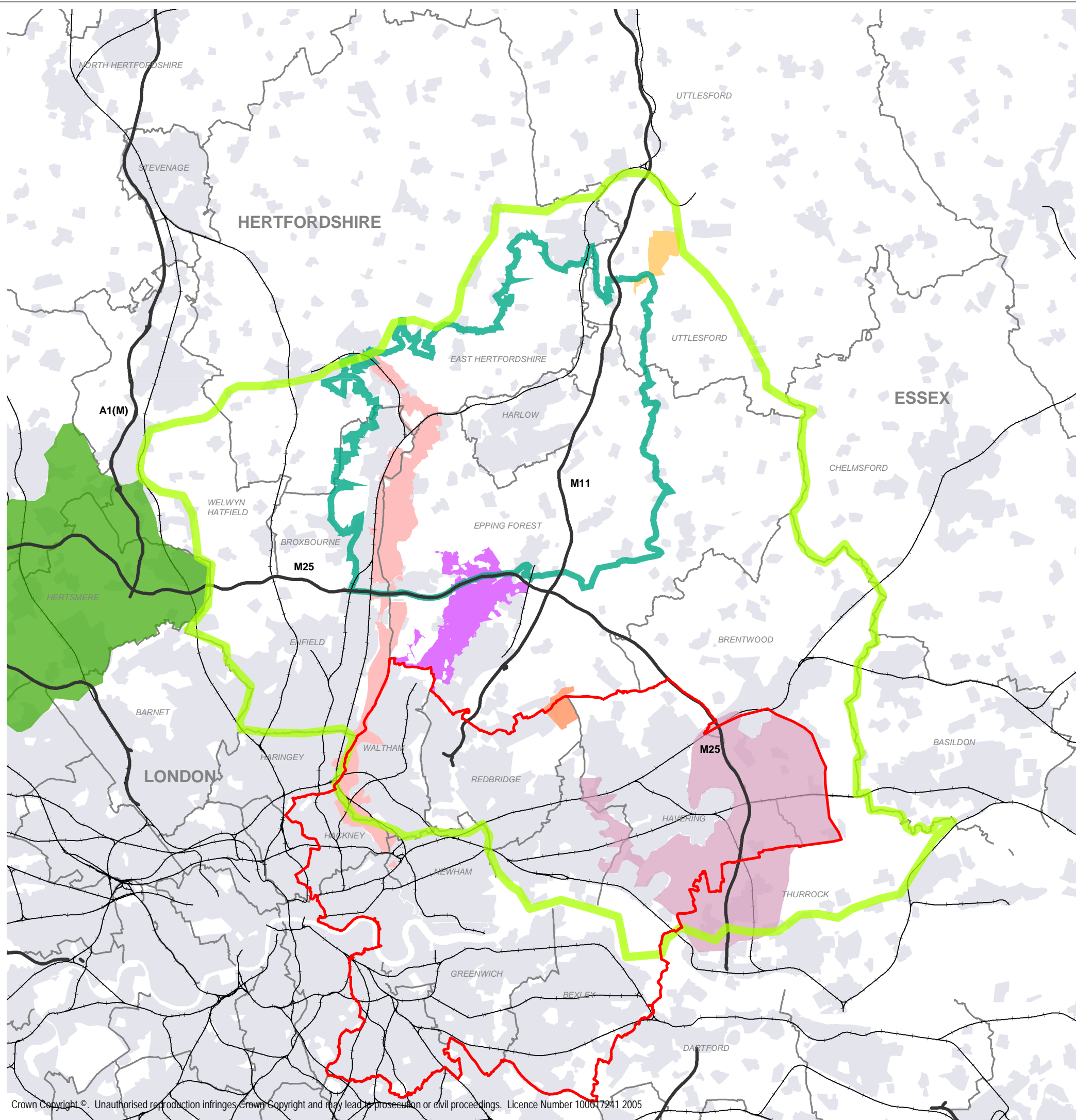
THE GREEN INFRASTRUCTURE NETWORK IS CONCEPTUAL
IN NATURE AND THIS FIGURE IS ONLY INDICATIVE

A GREEN INFRASTRUCTURE PLAN FOR THE HARLOW AREA

 CHRIS BLANDFORD ASSOCIATES
www.cba.uk.net

November 2005

S:\Filing\Jonathan\WHarlow\8_3\11096901_key2_AV8.mxd



-  Harlow Area Green Infrastructure Plan
-  Green Arc Initiative
-  Lee Valley Regional Park
-  Epping Forest
-  Hatfield Forest Country Park
-  Hainault Forest Country Park
-  Watling Chase Community Forest
-  Thames Chase Community Forest
-  East London Green Grid

Notes:

See Appendix A in Volume 1 Report for list of data sources

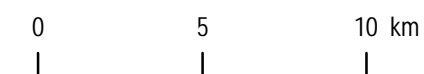
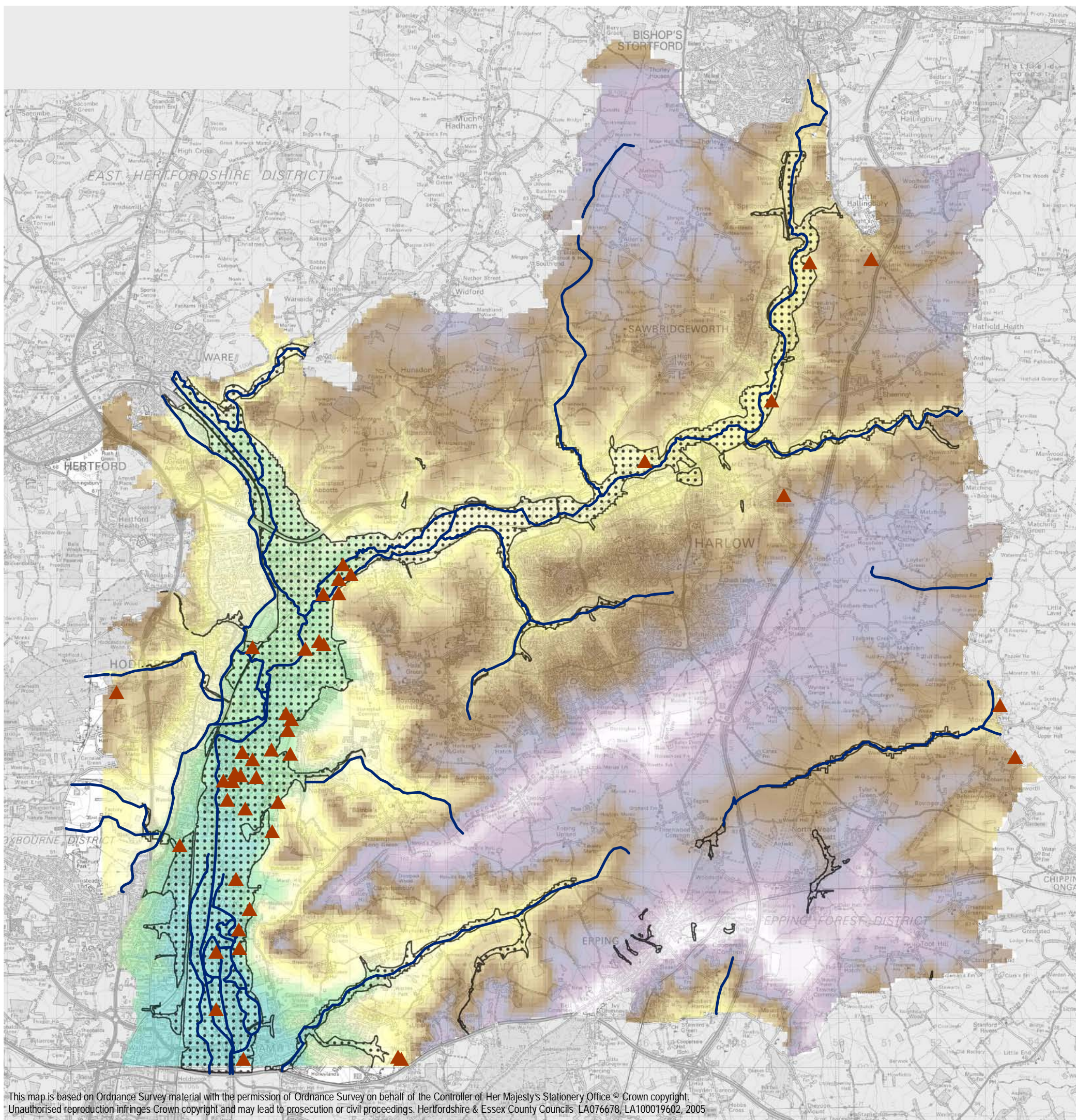
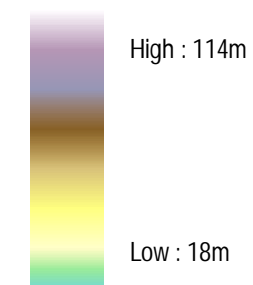


Figure 1
The Harlow Area - An Overview

A GREEN INFRASTRUCTURE PLAN FOR THE HARLOW AREA



Topography



Floodplain



Major Rivers



Sand and Gravel Extraction Sites

Notes:

See Appendix A in Volume 1 Report for list of data sources

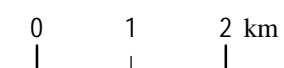


Figure 2
Physical Resources and Natural Systems

A GREEN INFRASTRUCTURE PLAN FOR THE HARLOW AREA



Key Ecological Assets include these Statutory and Non-Statutory Nature Conservation Designations :

-  Ramsar Site
-  Special Protection Area (SPA)
-  Special Area of Conservation (SAC)
-  Site of Special Scientific Interest (SSSI)
-  National Nature Reserve (NNR)
-  Ancient Woodland
-  County Wildlife Sites
-  Local Nature Reserve (LNR)
-  Protected Wildlife Verge (Harlow District only)

Notes:

See Appendix A in Volume 1 Report for list of data sources

0 1 2 km

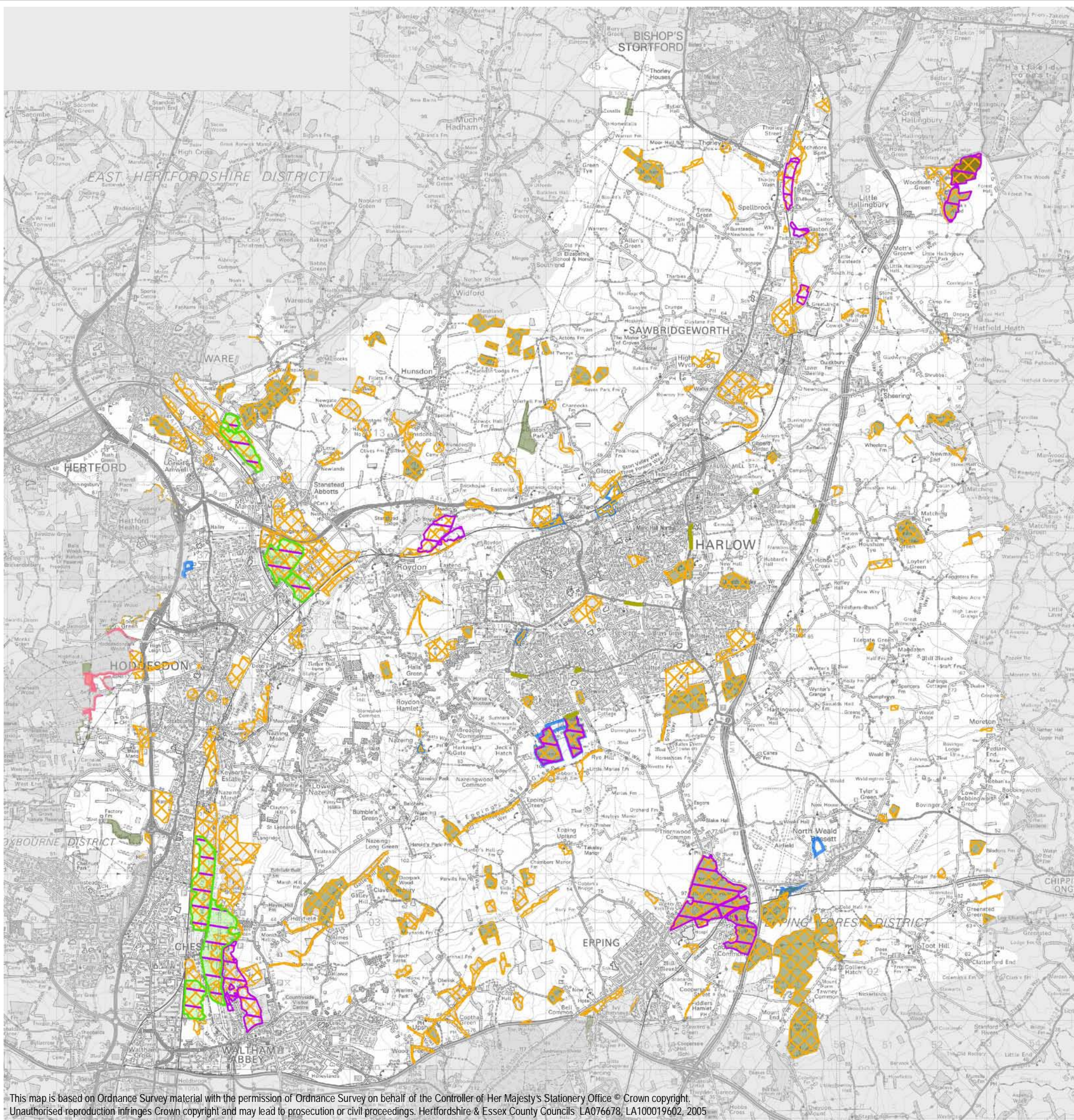
Figure 3
Existing Ecological Assets and Biodiversity :
Key Ecological Assets

A GREEN INFRASTRUCTURE PLAN
FOR THE HARLOW AREA

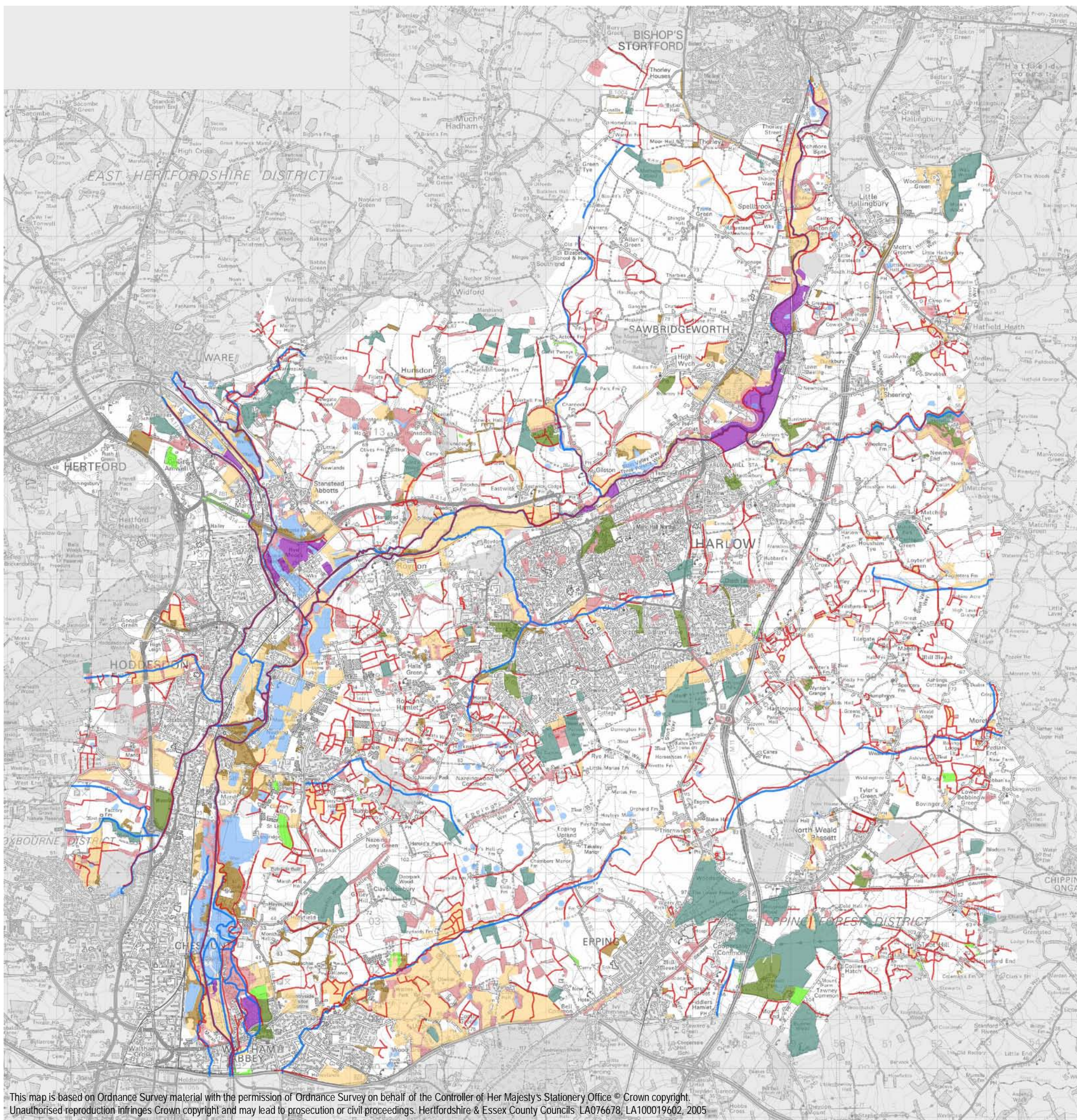
 CHRIS BLANDFORD ASSOCIATES
www.cba.uk.net

November 2005

S:\Projects\11096901_Harlow_Green_Infrastructure\GIS\projects\Final_281105\11096901_03_eco_existing.mxd



This map is based on Ordnance Survey material with the permission of Ordnance Survey on behalf of the Controller of Her Majesty's Stationery Office © Crown copyright.
Unauthorised reproduction infringes Crown copyright and may lead to prosecution or civil proceedings. Hertfordshire & Essex County Councils LA076678; LA100019602, 2005



Key Habitats

- Grassland
- Miscellaneous
- Parkland
- Lakes
- Pond (indicative location)
- Rivers and Streams
- Scrub
- Wetland
- Ancient Woodland
- Plantation Woodland
- Other Woodland
- Agricultural and Other Land Uses

Key Links / Dispersal Corridors



Notes:

See Appendix A in Volume 1 Report for list of data sources

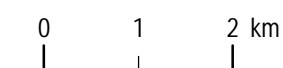


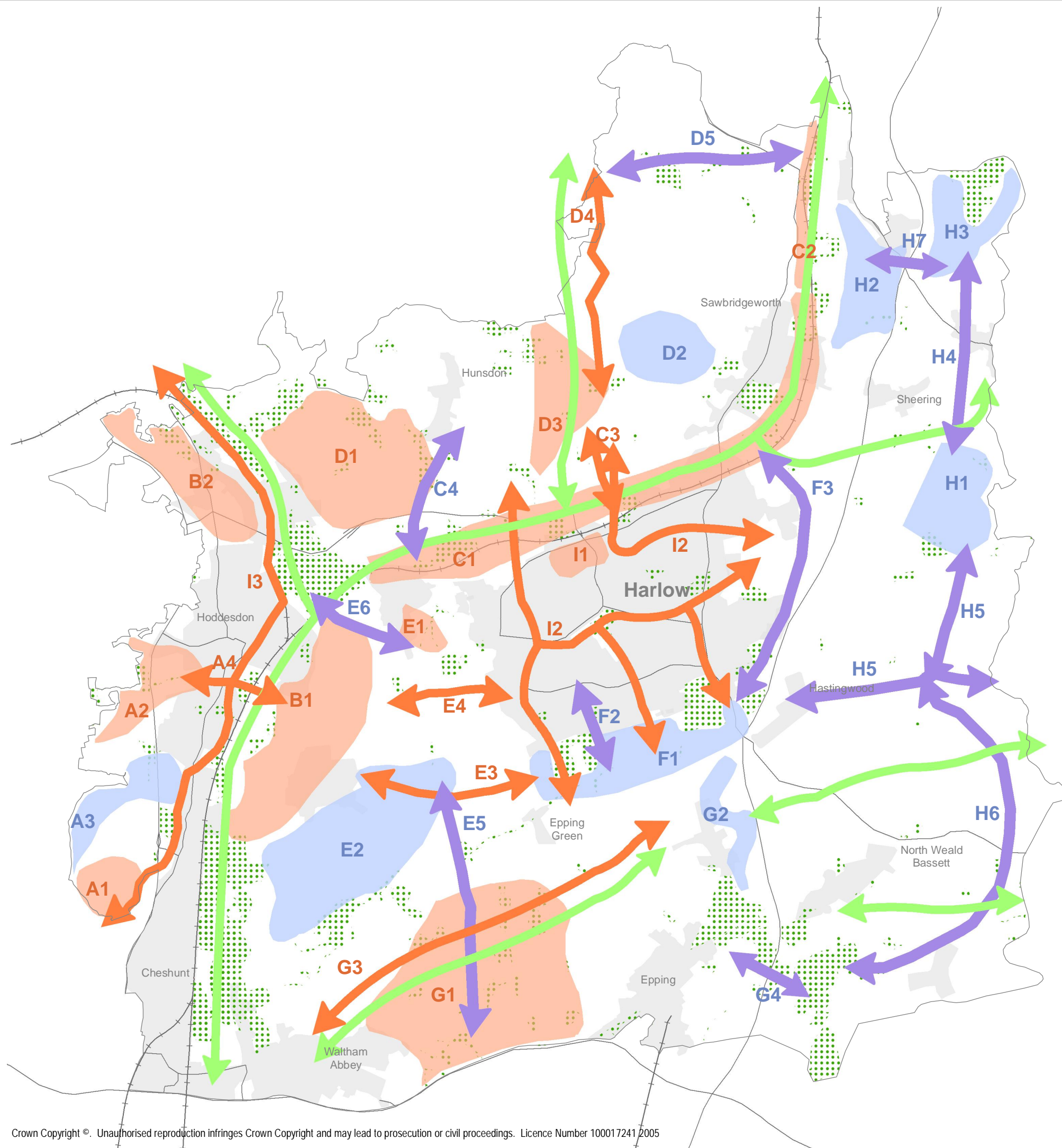
Figure 3b
Existing Ecological Assets and Biodiversity :
Key Habitats and Links

A GREEN INFRASTRUCTURE PLAN FOR THE HARLOW AREA

 CHRIS BLANDFORD ASSOCIATES
www.cba.uk.net

November 2005

S:\Projects\11096901_Harlow_Green_Infrastructure\GIS\projects\Final_281105\11096901_03b_key_hab.mxd

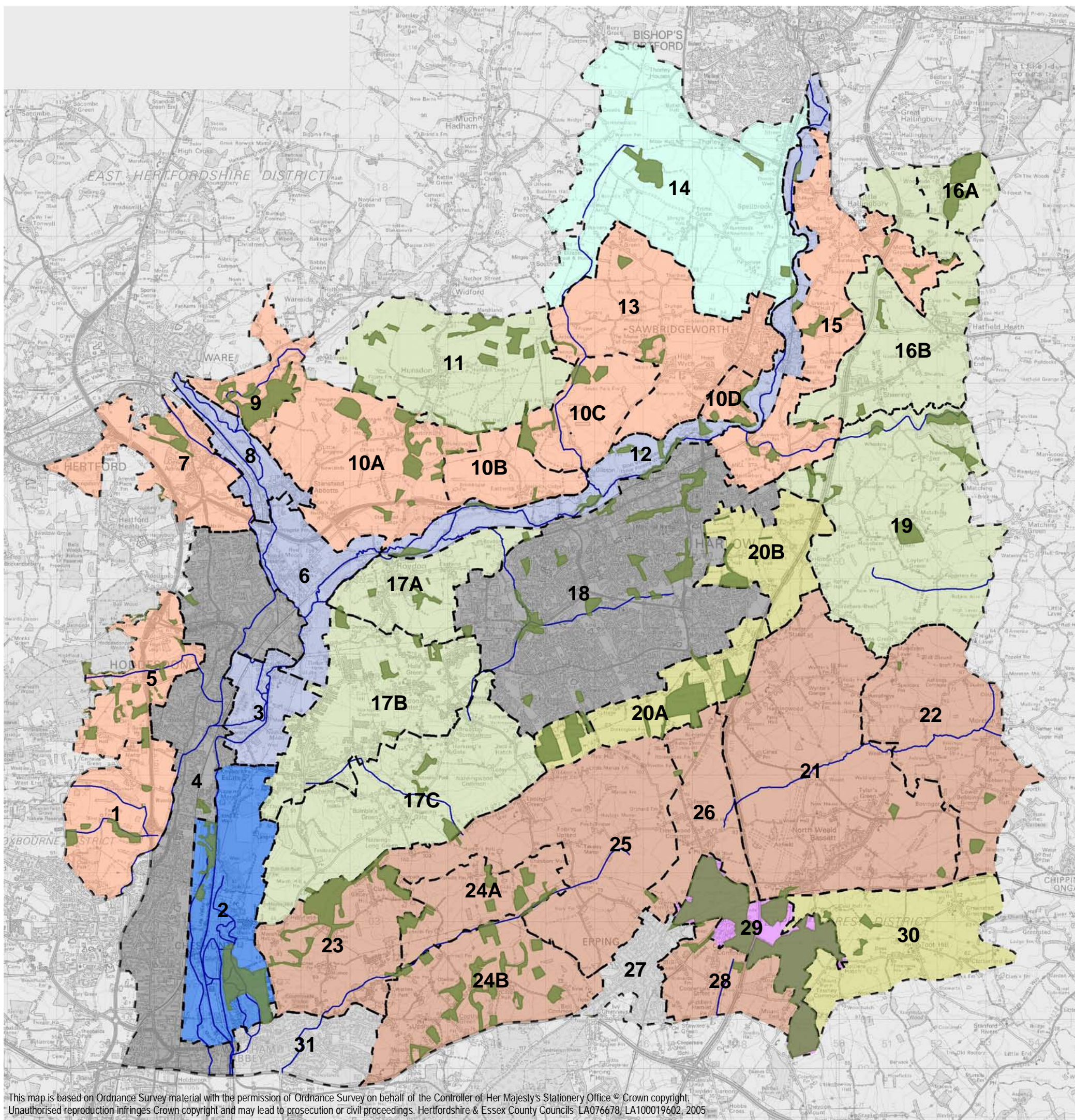


- Existing Ecological Network Assets**
- Key Ecological Assets (Designated Sites - see Figure 3)
 - Primary Key Links/Dispersal Corridors (See Figure 3b)
- Priority Areas with Opportunities to Strengthen Network**
- Habitat Enhancement Areas**
- A1. Cheshunt Park – Enhancement of hedgerows, verges and grassland
 - A2. Hoddesdon Park Wood Fringe – Enhancement of grassland and wet woodland
 - B1. East of River Lee – Enhancement of grassland, wetland and hedgerows
 - B2. Great Amwell – Enhancement of wetland and grassland
 - C1. River Stort – Enhancement of wetland
 - C2. Spellbrook – Enhancement of pools, swamp and wet grassland, hedgerows and woodland
 - D1. Hunsdonbury – Enhancement of grassland
 - D3. Gilston Park – Enhancement of new verges, woodland, scrub
 - D4. Kingsmead – Enhancement of grassland
 - G1. Upshire – Enhancement of grassland, stream channel, ponds and wetland
 - I1. Harlow Urban Area – Enhancement of Town Park
- Habitat Creation Areas**
- A3. Park Lane – Creation of woodland, hedgerows and grassland
 - D2. The Grove – Creation of arable field margins, grassland
 - E2. Lower Nazeing – Creation of new grassland, wetland
 - F1. South Harlow – Creation of new woodland, heathland, hedgerows and ditches
 - G2. Thornwood - Creation of new hedgerows, scrub
 - H1. Matching – Creation of woodland and scrub
 - H2. Grinstead Lane – Creation of wet grassland
 - H3. Little Hallingbury Park – Creation of scrub, woodland, wet woodland
- Enhanced Habitat Linkages**
- A4. Broxbourne to the Lee Valley – Enhancement of hedgerows and verges
 - C3. Fiddlers Brook – Enhancement of grassland, wetland, reed beds and aquatic vegetation
 - D4. Fiddlers Brook – Enhancement of verges, hedgerows and brook
 - E3. Nazeing Brook – Enhancement of grassland, arable margins and hedgerows
 - E4. West Harlow – Enhancement of verges and hedgerows
 - G3. Cobbins Brook – Enhancement of riparian corridor habitats
 - I2. Harlow Urban Area - Enhancement of riparian habitats and verges within the Green Wedges
 - I3. Hoddesdon / Cheshunt Urban Area – Enhancement of species-rich grassland, scrub and aquatic habitats along the New River navigation canal
- New Habitat Linkages**
- C4. Hunsdon Lane/Brook – Creation of new habitats along road verges, brook, hedgerows, arable field margins
 - D5. Between Fiddlers Brook and River Stort – Creation of new hedgerows, field margins, ponds, grassland, woodland
 - E5. Nazeing to Cobbin's Brook – Creation of new hedgerows, ditches, verges and grassland
 - E6. Roydon Park – Create new hedgerows, ditches, verges and grassland
 - F2. Rye Hill – Creation of new hedgerows and scrub
 - F3. East Harlow – Creation of new woodland and hedgerows
 - G4. Coopersale Common – Creation of new green bridge
 - H4. Hatfield Heath – Creation of new woodland, verges and hedgerows
 - H5. Tilegate – Creation of verges and hedgerows
 - H6. Lower Bobbingworth – Creation of grassland and scrub
 - H7. Stortford Road – Creation of green bridge

Notes:
 See Appendix A in Volume 1 Report for list of data sources
 See Figure 3b for existing key habitats

Figure 3c
 Priority Areas for Enhanced Green Spaces and Links for Wildlife

A GREEN INFRASTRUCTURE PLAN FOR THE HARLOW AREA



Landscape Character Types

- Major Urban Areas
- Urban Area
- Valley Floodplains
- Marshes
- Ridges and Slopes
- Plateaus
- Uplands
- Ridges
- Wooded Ridges
- Ridges and Valleys

Landscape Character Areas

- 1 Wormleybury and Cheshunt Park
- 2 Lea Valley Marshes
- 3 Middle Lea Valley South
- 4 Hoddesdon and Cheshunt Major Urban Area
- 5 Broxbourne
- 6 Rye Meads
- 7 Great Amwell Ridges and Slopes
- 8 Amwell Floodplain
- 9 Lower Ash Valley
- 10 Stansted and Pishiobury Parklands
- 11 Hunsdon Plateau
- 12 River Stort
- 13 High Wych Slopes
- 14 Thorley Uplands
- 15 Little Hallingbury Ridges and Slopes
- 16 Hatfield Heath Plateau
- 17 Roydon and Nazeing Plateau
- 18 Harlow Major Urban Area
- 19 Matching Plateau
- 20 Jack's Hatch to Church Langley Ridge
- 21 North Weald Ridges and Valleys
- 22 Magdalen Laver Ridges and Valleys
- 23 Holyfield Ridges and Valleys
- 24 Copped Hall Ridges and Valleys
- 25 Epping Ridges and Valleys
- 26 Thornwood Common Ridges and Valleys
- 27 Epping Urban Area
- 28 Coopersale Ridges and Valleys
- 29 East Epping Wooded Ridge
- 30 Toot Hill Ridge
- 31 Waltham Abbey

- Woodland
- Major Rivers

0 1 2 km

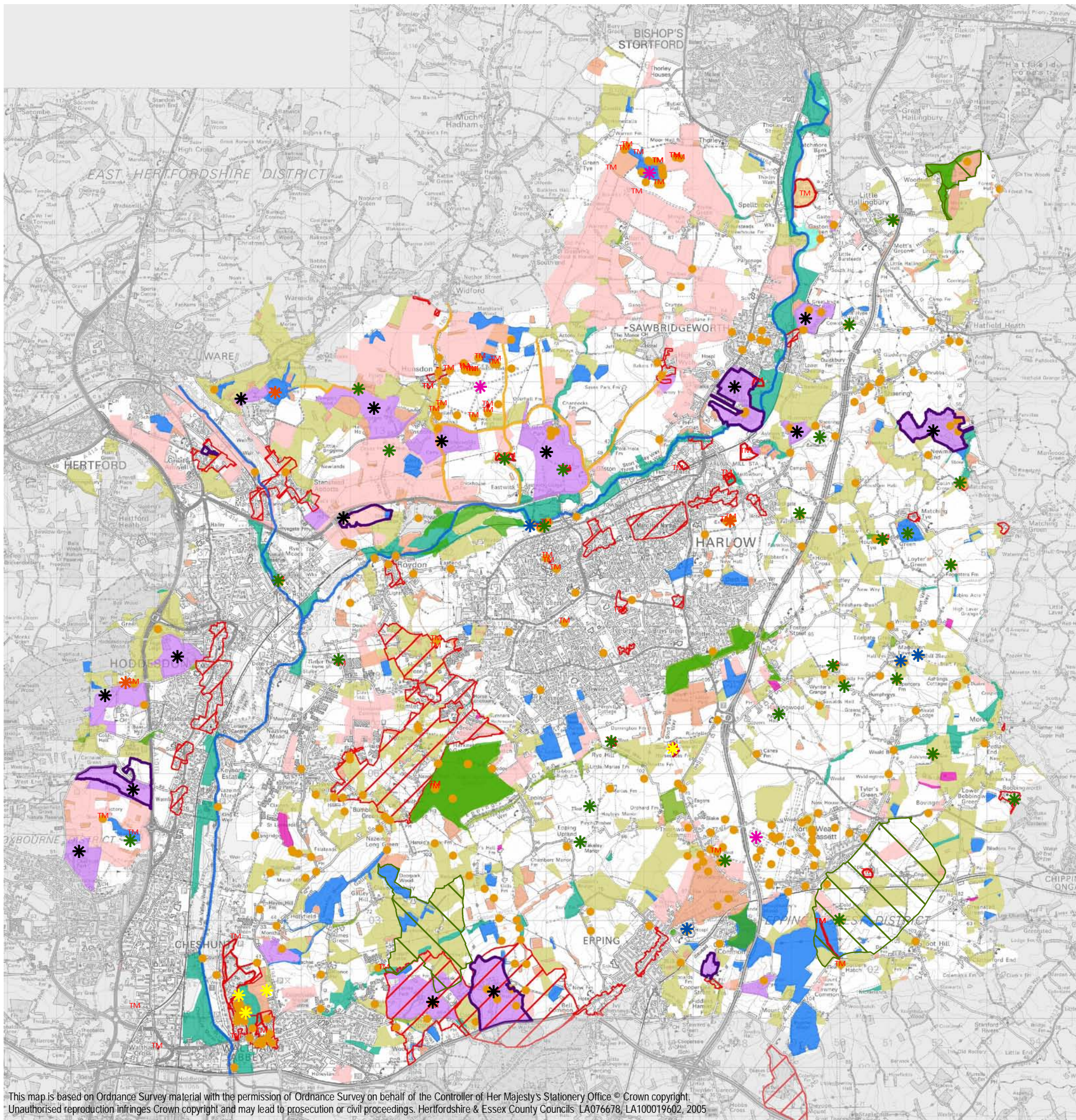
Notes:
See Appendix A in Volume 1 Report for list of data sources

Figure 4
Landscape Character Types and Areas

A GREEN INFRASTRUCTURE PLAN FOR THE HARLOW AREA

CHRIS BLANDFORD ASSOCIATES
www.cba.uk.net

November 2005
S:\Projects\11096901_Harlow_Green_Infrastructure\GIS\projects\Final_281105\11096901_04_Landscape.mxd



Protected Areas

- TM Scheduled Monuments
- Registered Historic Parks and Gardens
- Conservation Areas
- Ancient Landscapes

Visible Features

- Visible Archaeological Features

Pre 18th Century Surviving Landscape Features

- Ancient Woodland
- Registered Common Land
- Enclosed Fields
- Historic Routeways

18th & 19th Century Surviving Landscape Features

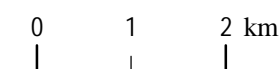
- Water Meadow
- Enclosed Meadow Pasture
- Enclosed Fields
- Parkland
- Navigations

19th & 20th Century Surviving Landscape Features

- Woodland
- Orchard

Key Sites

- Parks and Gardens
- Mill Sites
- Prehistoric Sites
- 20th Century Military Sites
- Monastic Sites
- Medieval Settlement Sites

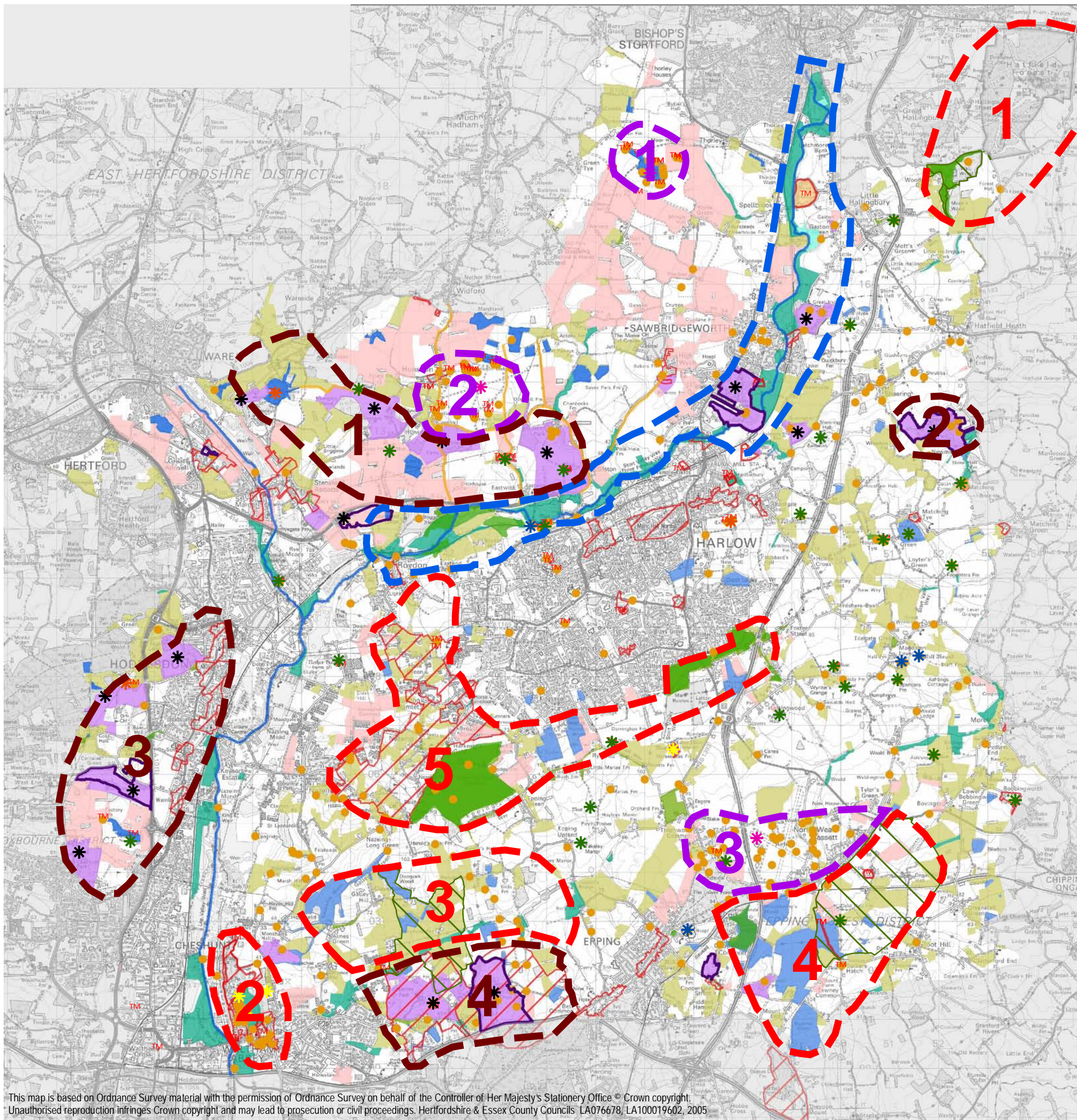


Notes:

See Appendix A in Volume 1 Report for list of data sources

Figure 5
Archaeological, Historical and Cultural Assets

A GREEN INFRASTRUCTURE PLAN FOR THE HARLOW AREA



Priority Areas

Ancient Landscapes

1. Hatfield Forest
2. Waltham Abbey and Environs
3. Epping Forest Fringe
4. Ongar Park and Woodlands
5. Nazeing and Rye Hill

Historic Parklands

1. North of River Stort
2. Down Hall
3. West of Hoddesdon
4. Epping Forest Fringe

Historic Airfields

1. Allen's Green
2. Hunsdon
3. North Weald

Stort Valley Historic Landscapes

Notes:

See Figure 5 key

See Appendix A in Volume 1 Report for list of data sources

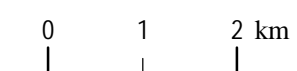
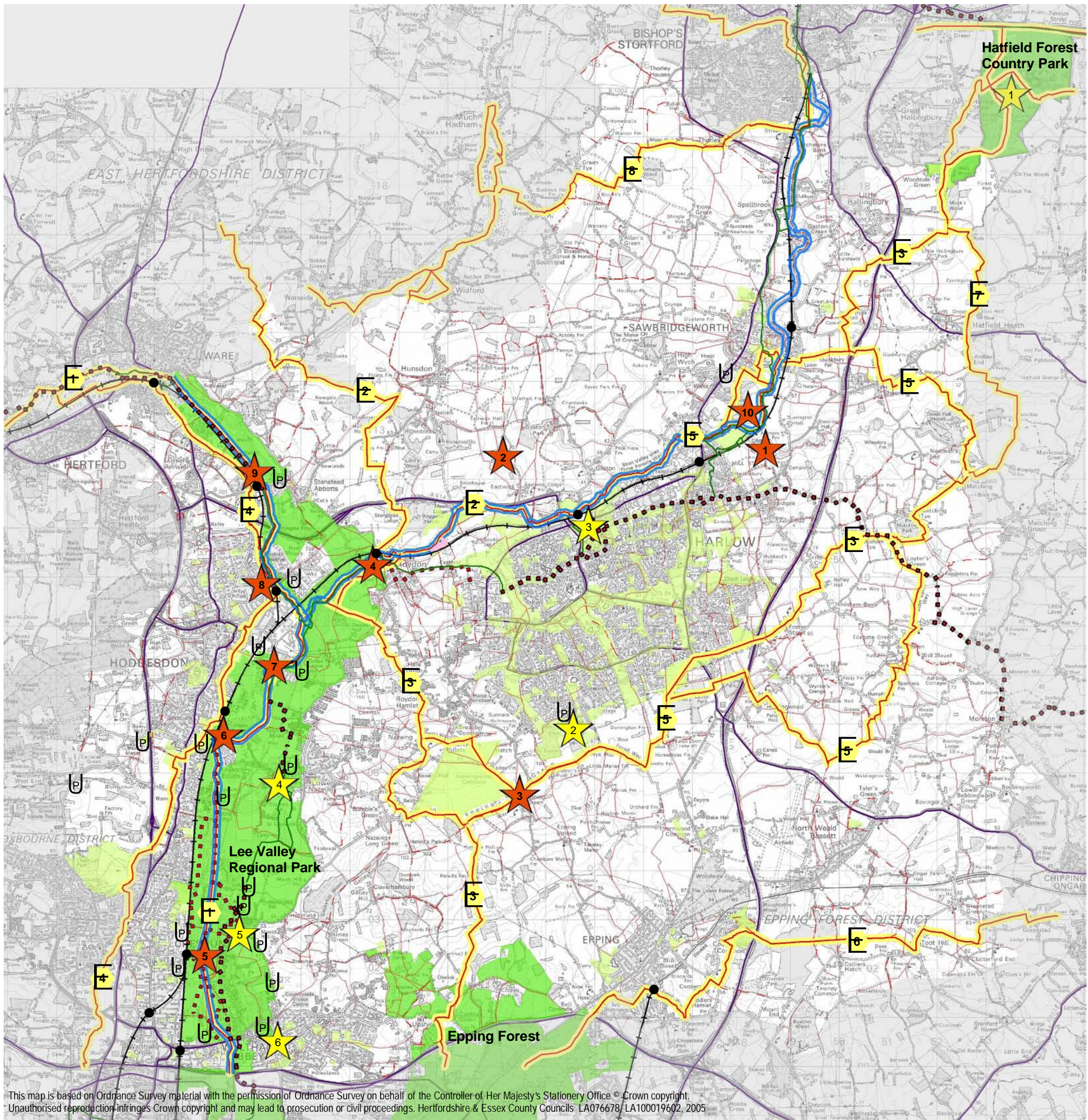


Figure 5a
Priority Areas for Enhanced Management of
Archaeological, Historical and Cultural Assets

A GREEN INFRASTRUCTURE PLAN FOR THE HARLOW AREA



- Transport Routes
- Strategic Road Network
 - Car Parks
 - Railway
 - River Navigations
- Public Rights of Way
- Footpath
 - Bridleway
 - Road used as Public Path / Byway Open to All Traffic
 - Cycle Routes
- Strategic Public Open Space (>400ha)
- Public Open Space (<400ha) (including Cemeteries, Golf Courses, Nature Reserves, Common Land, Parks, Sports Grounds, Allotments)
- Permissive Access Land
- Countryside Stewardship Access Land

- Trails
- Lee Valley Walk
 - Harcamlow Way
 - Three Forests Way
 - The New River Path
 - Stort Valley Way
 - Essex Way
 - Forest Way
 - Hertfordshire Way

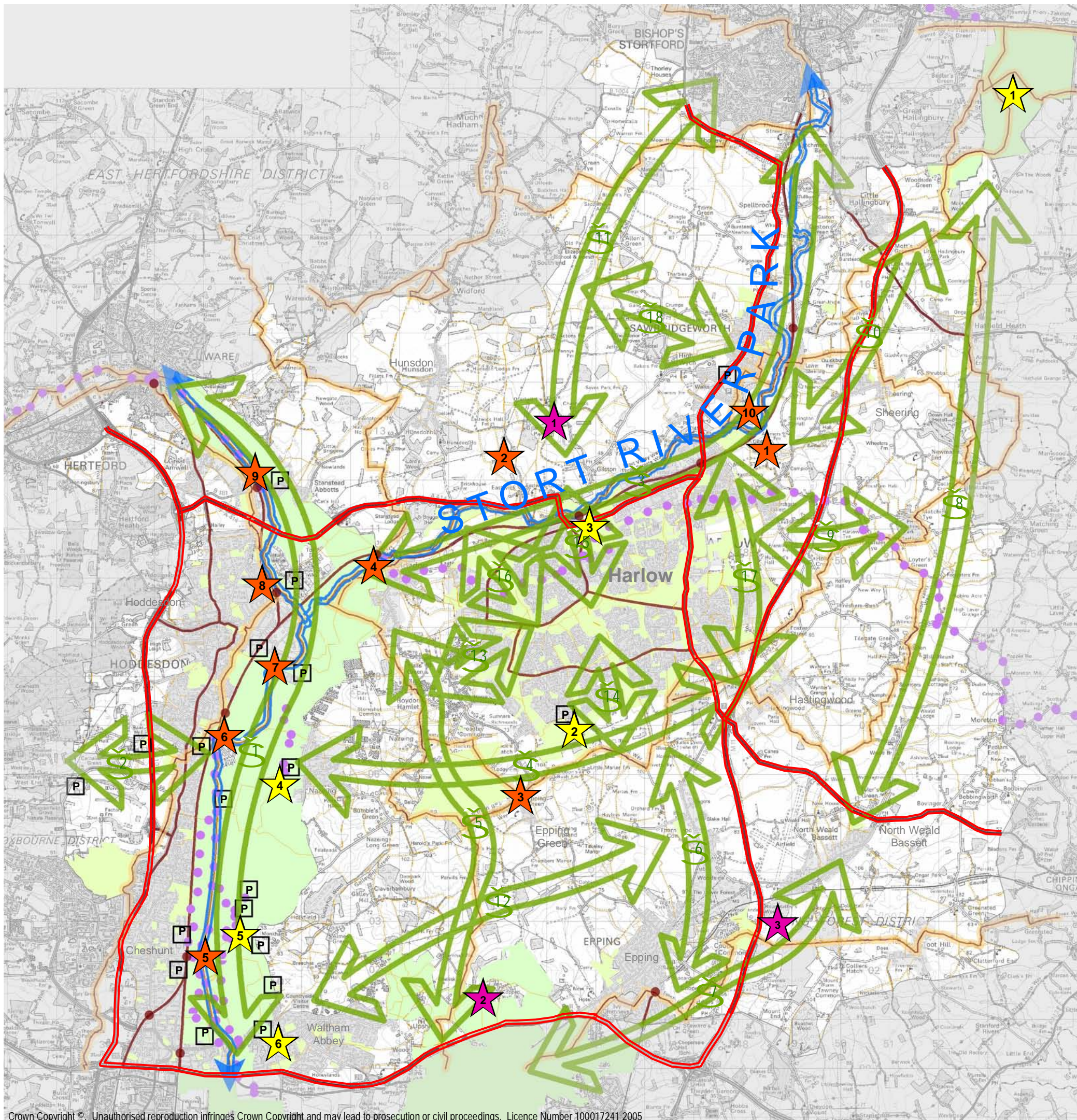
- Major Destinations / Focal Points
- Hatfield Forest Country Park
 - Parndon Wood Nature Reserve
 - Harlow Town Park
 - Clayton Hill Country Park
 - River Lee Country Park
 - Waltham Abbey

- Key Destinations / Focal Points
- Gibberd's Garden
 - Eastwick Medieval Settlement Site
 - Epping Green / Rye Hill
 - Roydon Mill
 - Chesthunt Station
 - Broxbourne / Keyzers Estate
 - Dobb's Weir / Nazeing Mead
 - Rye House
 - St. Margarets / Amwell Nature Reserve
 - Pishiobury Park

Notes:
See Appendix A in Volume 1 Report for list of data sources

Figure 6
Existing Access Networks and Recreational Facilities

A GREEN INFRASTRUCTURE PLAN
FOR THE HARLOW AREA



Existing Access and Recreational Assets

- Car Parks
- Public Rights of Way
- Trails
- Strategic Public Open Space to be Safeguarded
- Other Public Open Space to be Safeguarded
- Major Strategic Destinations/Focal Points to be Safeguarded and Enhanced (see Figure 6)
- Key Strategic Destinations/Focal Points to be Safeguarded and Enhanced (see Figure 6)
- New Strategic Destinations & Gateways
- Gilston Park Area
- Copped Hall Area
- Wintry Wood to Beachet Wood

STORT RIVERPARK - New Public Open Space

New Strategic Access Links and Network Enhancements

- Greenways (illustrative only)
- 1 Waltham Abbey / River Lee Country Park to Ware (Lee Valley)
- 2 Broxbourne Woodland Complex to Clayton Hill Country Park
- 3 Roydon via Harlow Town Park to Bishop's Stortford (Stort Valley)
- 4 Lower Nazeing / Clayton Hill Country Park to Latton Bush
- 5 Roydon via Nazeing Common to Epping Forest
- 6 Parndon Wood Nature Reserve / Kingsmoor to Epping
- 7 North Weald Bassett / Epping to Epping Forest
- 8 North Weald Bassett to Hatfield Forest Country Park
- 9 East Harlow to Matching Green
- 10 Sawbridgeworth to Hatfield Forest Country Park
- 11 Gilston to Bishop's Stortford
- 12 Waltham Abbey via Cobbin's Brook to Thornwood Common
- 13 West Harlow to Lee Valley
- 14 South Harlow to Rye Hill
- 15 North Harlow to River Stort
- 16 North West Harlow to River Stort
- 17 River Stort to Church Langley
- 18 Greenway 11 to Sawbridgeworth
- Proposed Sustrans National Cycle Network Route
- Riverways
- Parkways
- Railways

Notes:

See Appendix A in Volume 1 Report for list of data sources

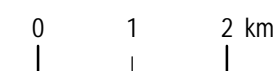
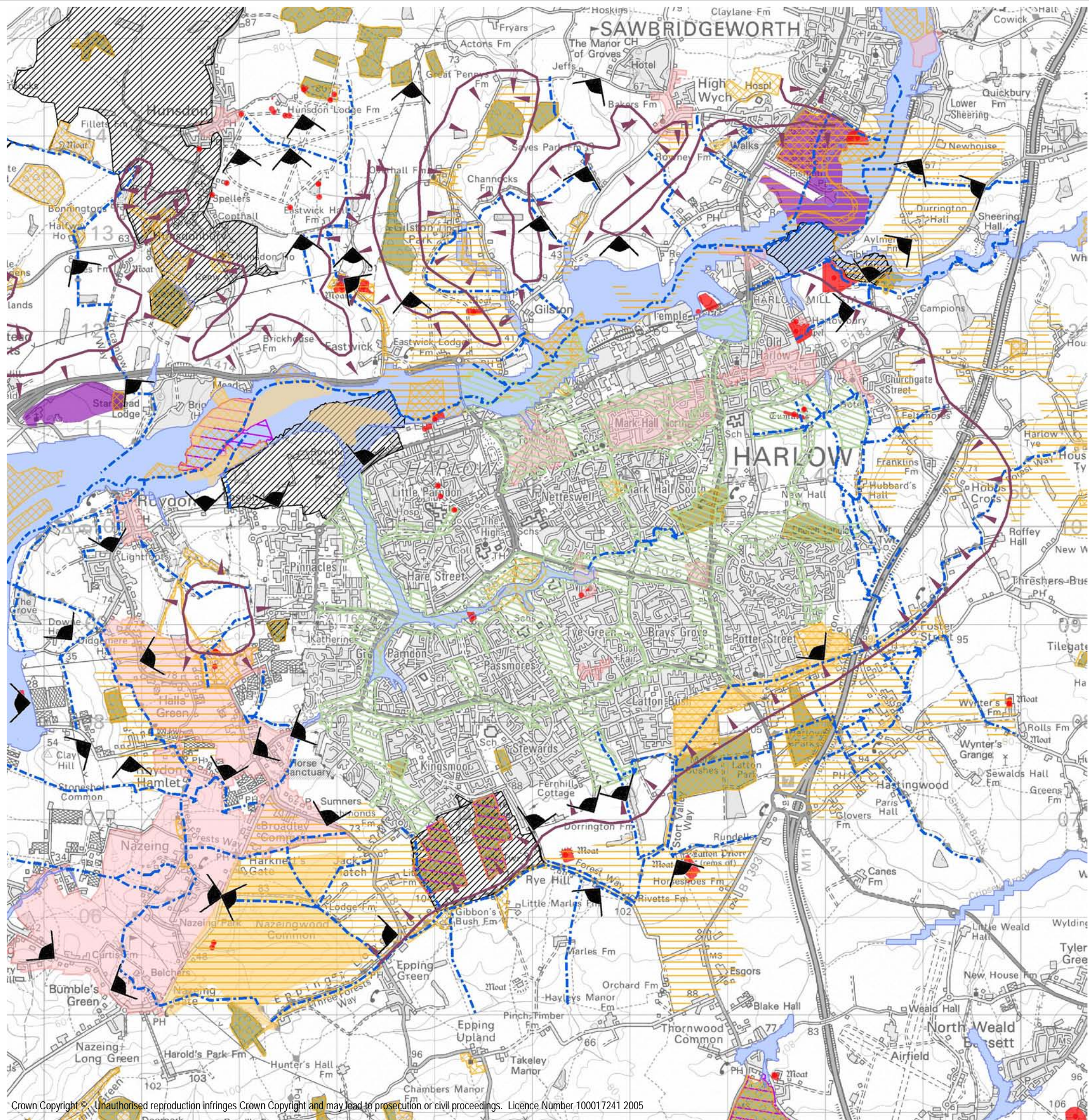


Figure 6a
Priority Areas for Enhanced Green Spaces and
Access Links for People

A GREEN INFRASTRUCTURE PLAN FOR THE HARLOW AREA

CHRIS BLANDFORD ASSOCIATES
www.cba.uk.net

November 2005



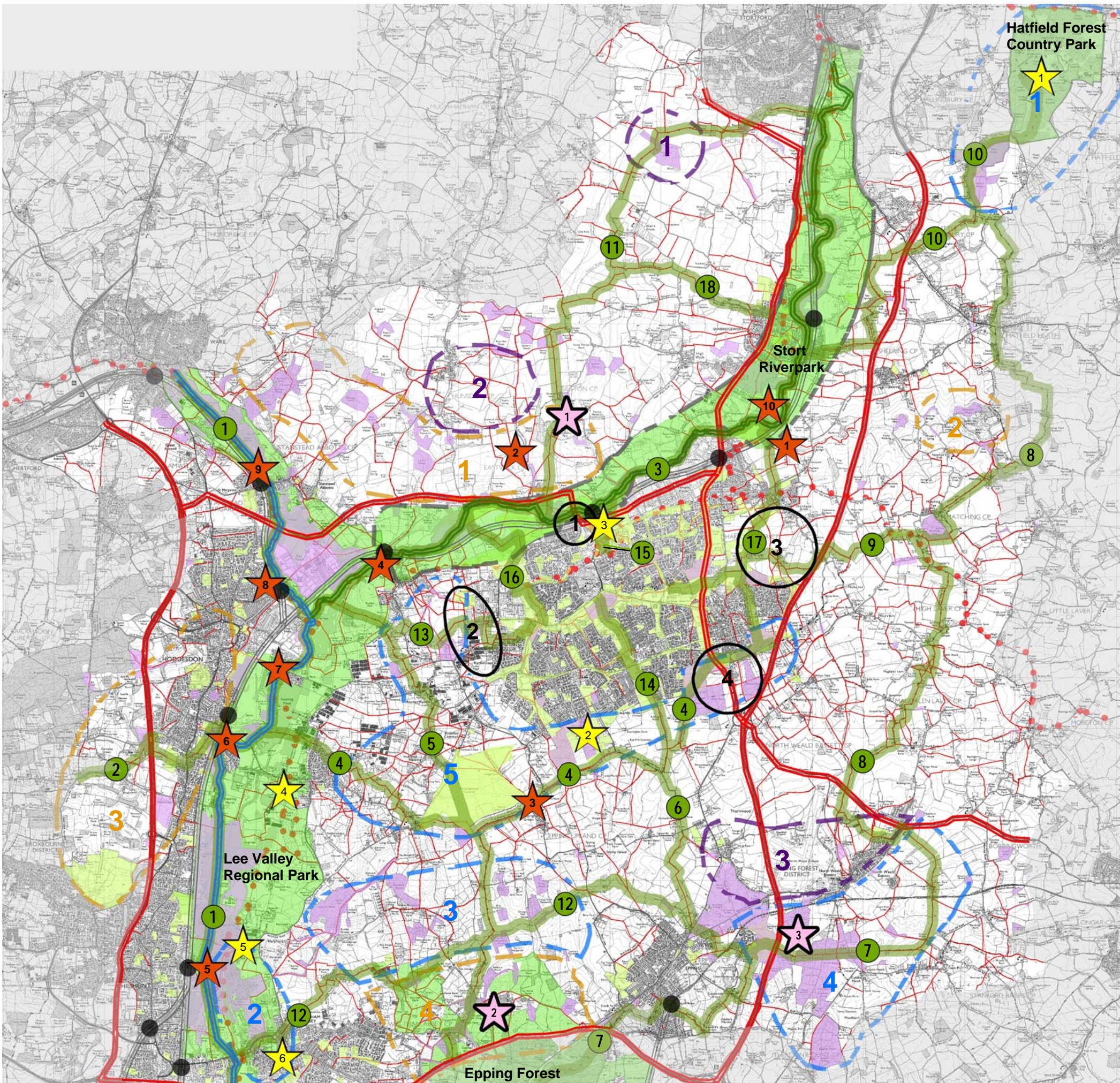
- Key Designated Assets**
- Scheduled Monument
 - Site of Special Scientific Interest (SSSI)
 - Floodplain
 - Registered Common Land
 - Ancient Woodland
 - Conservation Area
 - Registered Historic Parks & Garden
 - County Wildlife Site
 - Green Wedge
 - Local Landscape Designation
- Other Key Assets**
- Key Views
 - Visually Significant Slopes
 - Key Historic Landscapes
 - Key Paths

Notes:
See Appendix A in Volume 1 Report for list of data sources



Figure 7
Key Green Infrastructure Assets in and around Harlow

A GREEN INFRASTRUCTURE PLAN
FOR THE HARLOW AREA



The Green Infrastructure Network involves the creation, protection and enhancement of the following multi-functional green spaces and links:

- Strategic Parks** – major areas of multi-functional public green space
 - New Strategic Park*
The Stort Riverpark
 - Existing Strategic Parks*
Epping Forest
Hatfield Forest Country Park
Lee Valley Regional Park
- Local Green Space Parks** – locally significant areas of multi-functional public green space
- Core Natural Green Spaces** – designated sites of nature conservation

Heritage Landscapes – areas targeted for integrated conservation management (NB. these are not designations)

- Ancient Landscapes**
 1. Hatfield Forest
 2. Waltham Abbey and Environs
 3. Epping Forest Fringe
 4. Ongar Park and Woodlands
 5. Nazeing and Rye Hill
- Historic Parklands**
 1. North of River Stort
 2. Down Hall
 3. West of Hoddesdon
 4. Epping Forest Fringe
- Historic Airfields**
 1. Allen's Green
 2. Hunsdon
 3. North Weald

Stort Valley Historic Landscapes

Strategic Destinations and Gateways – focal points of recreational activity and access to the countryside

Major Strategic Destinations and Gateways

- 1. Hatfield Forest Country Park
- 2. Parndon Wood Nature Reserve
- 3. Harlow Town Park
- 4. Clayton Hill Country Park
- 5. River Lee Country Park
- 6. Waltham Abbey

Key Strategic Destinations and Gateways

- 1. Gibberd's Garden
- 2. Eastwick Medieval Settlement Site
- 3. Epping Green / Rye Hill
- 4. Roydon Mill
- 5. Chestnut Station
- 6. Broxbourne / Keyzers Estate
- 7. Dobb's Weir / Nazeing Mead
- 8. Rye House
- 9. Amwell Nature Reserve
- 10. Pishiobury Park

New Strategic Destinations and Gateways

- 1. Gilston Park Area
- 2. Copped Hall Area
- 3. Wintry Wood to Beachet Wood

Greenways – linear habitats incorporating shared use paths

1. Waltham Abbey / River Lee Country Park to Ware (via Lee Valley)
2. Broxbourne Woodland Complex to Clayton Hill Country Park
3. Roydon via Harlow Town Park to Bishop's Stortford (via Stort Valley)
4. Lower Nazeing / Clayton Hill Country Park to Latton Bush
5. Roydon via Nazeing Common to Epping Forest
6. Parndon Wood Nature Reserve / Kingsmoor to Epping
7. North Weald Bassett / Epping to Epping Forest
8. North Weald Bassett to Hatfield Forest Country Park
9. East Harlow to Matching Green
10. Sawbridgeworth to Hatfield Forest Country Park
11. Gilston to Bishop's Stortford
12. Waltham Abbey via Cobbin's Brook to Thornwood Common
13. West Harlow to Lee Valley
14. South Harlow to Rye Hill
15. North Harlow to River Stort
16. North West Harlow to River Stort
17. River Stort to Church Langley
18. Greenway 11 to Sawbridgeworth

- Existing Rights of Way
- Sustrans Cycle Route

Riverways – multi-functional corridors and sequences of spaces and places

- River Lee Navigation
- River Stort Navigation

New Urban Landscapes of Distinction – urban gateways targeted for environmental design improvements

1. Harlow Rail Station/Town Park
2. West Harlow
3. East Harlow/New Hall
4. South East Harlow/M11 Approach

Parkways – road transport corridors targeted for environmental design improvements

- M25
- M11
- A10
- A414
- A1184

Railways – key rail transport corridors and stations targeted for environmental design improvements

WAGN Railway and Stations
London Underground Central Line and Epping Station

0 1 2 km



Notes :
For illustrative purposes only - see section 3.4 for details
See Appendix A in Volume 1 Report for list of data sources

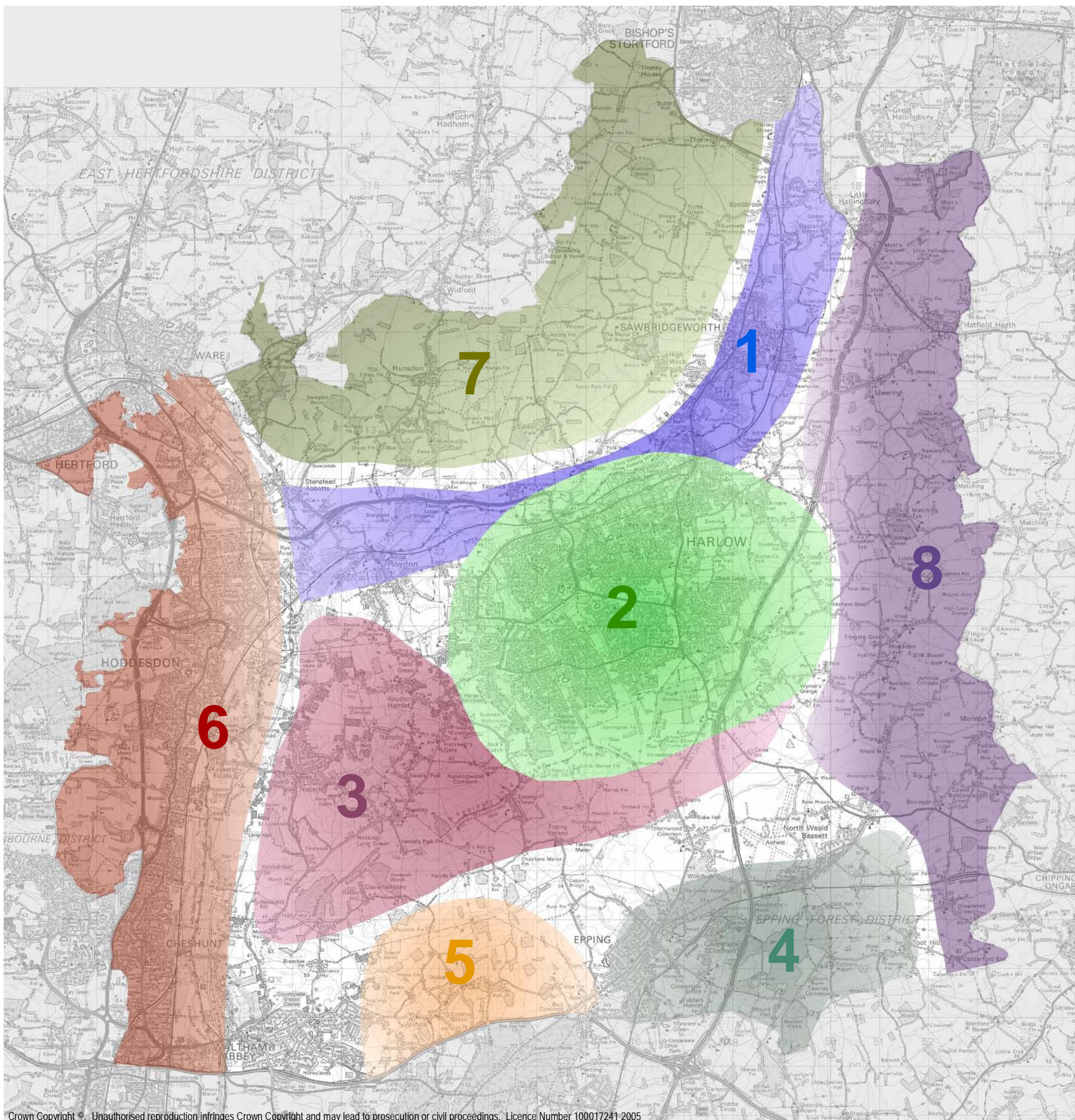
Figure 8
The Green Infrastructure Network for the Harlow Area

THE GREEN INFRASTRUCTURE NETWORK IS CONCEPTUAL IN NATURE AND THIS FIGURE IS ONLY INDICATIVE

A GREEN INFRASTRUCTURE PLAN
FOR THE HARLOW AREA

 **CHRIS BLANDFORD ASSOCIATES**
www.cba.uk.net

November 2005



- 1 Stort Riverpark
- 2 Harlow Town and Country Links Projects
- 3 Roydon, Nazeing and Rye Hill Projects
- 4 Epping and North Weald Bassett Projects
- 5 Epping Forest Fringes Projects
- 6 Lee Valley Projects
- 7 North of Stort Projects
- 8 East of M11 Projects

Notes:

See Appendix A in Volume 1 Report for list of data sources

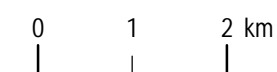


Figure 9
Green Infrastructure Project Areas

A GREEN INFRASTRUCTURE PLAN FOR THE HARLOW AREA

 CHRIS BLANDFORD ASSOCIATES
www.cba.uk.net

November 2005

S:\Projects\11096901_Harlow_Green_Infrastructure\GIS\projects\Final_281105\11096901_09_projects.mxd