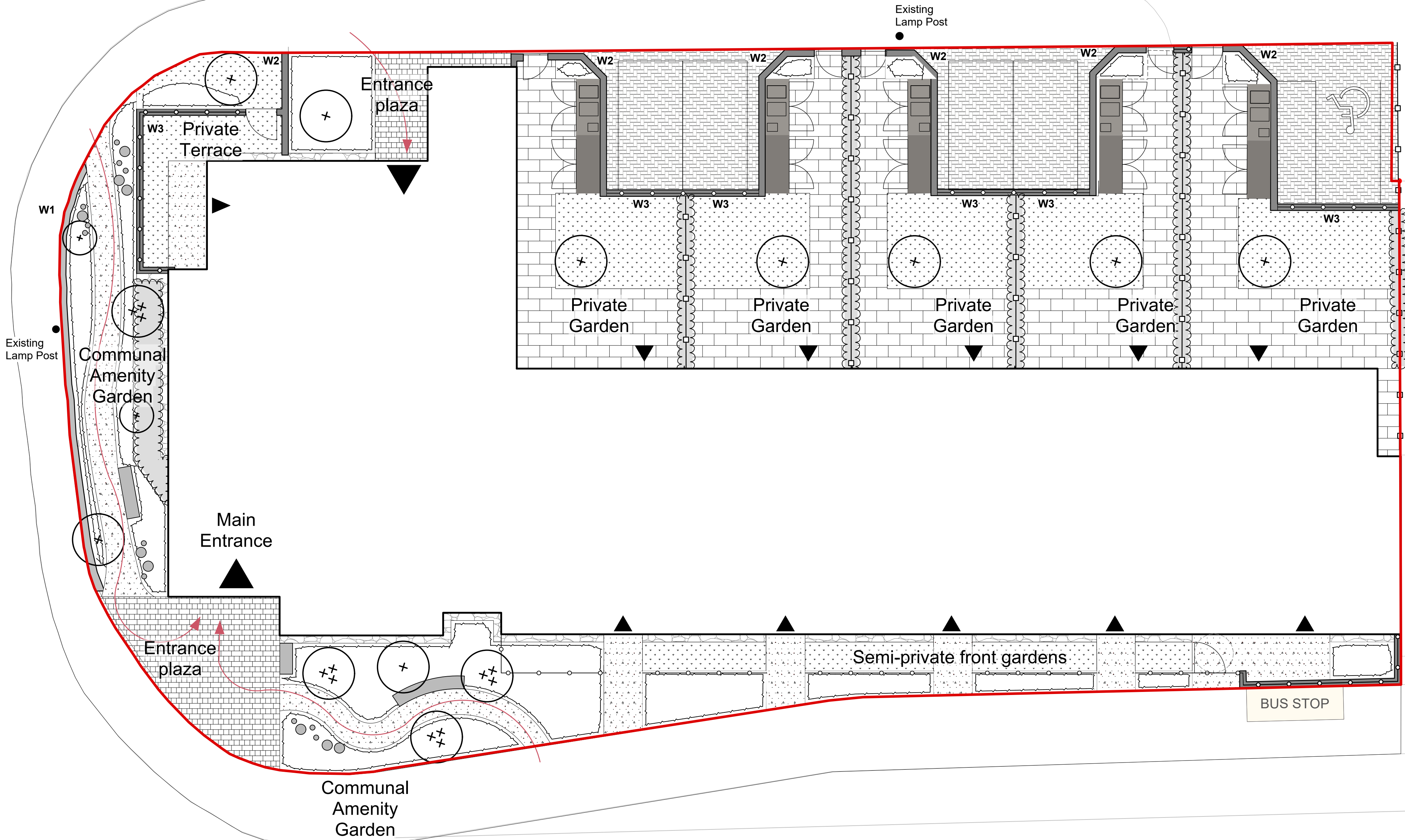


PINCEYBROOK ROAD

PARNALL ROAD

KINGDOM HALL

Vehicle Crossover Details / Highways work to Transport Consultants information



**Note**  
1. Do not scale from this drawing  
2. To be read in conjunction with Project Risk Register REF: XXX  
3. To be read in conjunction with all other Landscape Architect's drawings

**KEY**

- Site**
- Site Boundary
  - Proposed Building
  - Main Building Entrance
  - Building Entrance
  - Existing Lamp Post
- Planting**
- Proposed Tree
  - Proposed Multi-stem Tree
  - Amenity Planting
  - Hedge Planting
- Paving**
- Vehicular Concrete Block Paving
  - Concrete Block Paving
  - Concrete Flag Paving
  - Resin Bound Gravel
  - Proposed Loose Gravel
- Furniture**
- Seating Bench
  - Informal Play Equipment
- Fencing and Structures**
- Proposed Gates
  - Proposed Low Wall 1.2m Height Brick to match building
  - Proposed Wall 1.8m Height Brick to match building
  - Proposed Low Wall with Railing 1.8m Height Brick to match building
  - Low Railing 1.2m Height
  - Closeboard Fence 1.8m Height

ID	RISK	MITIGATION	DATE MITIGATED
RESIDUAL PROJECT RISKS			

DATE	REV	DESCRIPTION OF REVISION	DRAWN BY	APPROVED BY
25/05/2023	P03	Updated to include comments from McBains [LKCD - Email 19.05.23, Transport Consultants (PJA 19.05.23) issued for Planning	IP	KS
18/05/2023	P02	Site Plans updated to incorporate revised plans from McBains 15.05.23, LK		

**REVISIONS**

STATUS  
**S2 - STAGE 3 - FOR PLANNING**

**ares**  
LANDSCAPE ARCHITECTS

Ares Landscape Architects LTD  
Gatecrasher,  
51 Eyre Lane  
Sheffield  
S1 4RS  
t: 0114 276 2000  
e: hello@aresdesign.co.uk  
w: ares.eu.com

CLIENT:  
**McBains**

PROJECT TITLE:  
**Parnall Road**

DRAWING TITLE:  
**Landscape General Arrangement**

DRAWING SCALE: 1:100  
PAPER SIZE: A1  
DRAWN BY: KP  
APPROVED BY: KS  
DRAWN DATE: 17/04/2023  
ALA PROJECT CODE: ALA786

DRAWING NUMBER: 786-ALA-00-XX-DR-L-0002  
STATUS: S2  
REVISION: P03





**Note**

1. Do not scale from this drawing  
2. To be read in conjunction with Project Risk Register REF: XXX  
3. To be read in conjunction with all other Landscape Architect's drawings

- KEY**
- (A) Communal garden space with informal play and garden path to main entrance.
  - (B) Main entrance plaza.
  - (C) Communal garden space with informal play, rain gardens and bench seating.
  - (D) Semi-private front gardens creating a buffer between Parnall Street and houses.
  - (E) Existing bus stop
  - (F) Private amenity gardens for each dwelling
  - (G) Entry to bin store for apartments.
  - (H) Secondary entrance plaza.
  - (I) Garden terrace for ground floor flat.
  - (J) 0.5m planting strip against the public realm for privacy to ground floor flat.
  - (K) Parking area, with permeable paving & attenuation. Access, tracking and visibility splays to Transport Consultants information

ID	RISK	MITIGATION	DATE MITIGATED
RESIDUAL PROJECT RISKS			

DATE	REV	DESCRIPTION OF REVISION	DRAWN BY	APPROVED BY
25/05/2023	PO3	Updated to include comments from McBains [LKCD - Email 19.05.23, Transport Consultants (PJA 19.05.23) issued for Planning	IP	KS
18/05/2023	PO2	Site Plans updated to incorporate revised plans from McBains 15.05.23, LK		

**STATUS**

**S2 - STAGE 3 - FOR PLANNING**

**ares**  
LANDSCAPE ARCHITECTS

Ares Landscape Architects LTD  
Gatecrasher,  
51 Eyre Lane  
Sheffield  
S1 4RS  
t: 0114 276 2000  
e: hello@aresdesign.co.uk  
w: ares.eu.com

CLIENT:

**McBains**

PROJECT TITLE:

**Parnall Road**

DRAWING TITLE:

**Landscape Illustrative Masterplan**

DRAWING SCALE: 1:100  
PAPER SIZE: A1

DRAWN BY: KP  
APPROVED BY: KS

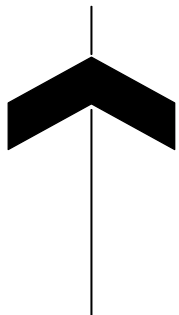
DRAWN DATE: 17/04/2023  
ALA PROJECT CODE: ALA786

DRAWING NUMBER: 786-ALA-00-XX-DR-L-0001

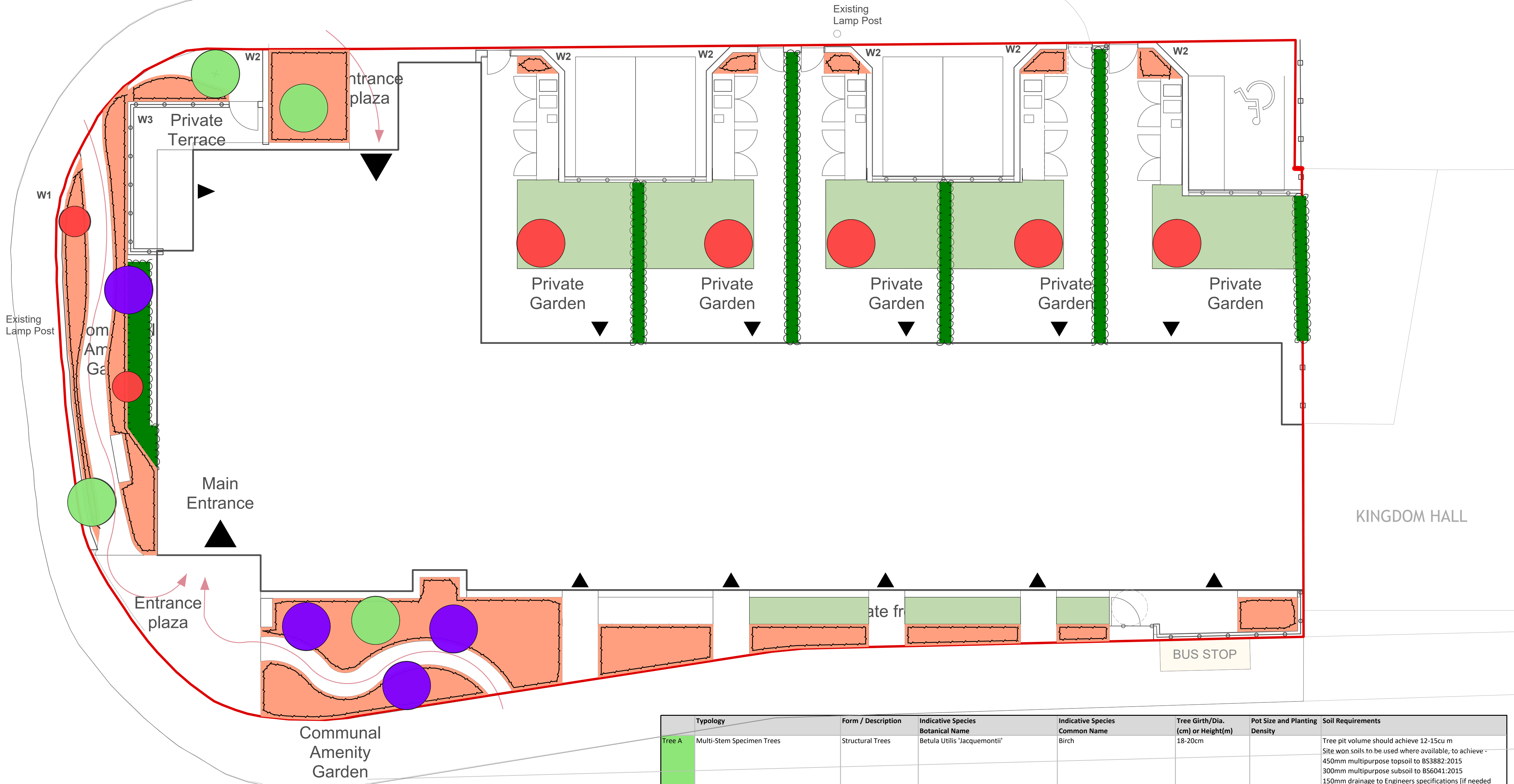
STATUS: S2

REVISION: PO3





Vehicle Crossover Details / Highways work to Transport Consultants information



- Note**
1. Do not scale from this drawing
  2. To be read in conjunction with Project Risk Register REF: XXX
  3. To be read in conjunction with all other Landscape Architect's drawings

**KEY**

- Site**
- Site Boundary
  - Proposed Building
  - Main Building Entrance
  - Building Entrance
  - Existing Lamp Post
- Key**
- Proposed Tree  
*Betula utilis 'Jacquemontii'*
  - Proposed Multi-stem Tree  
*Cercis Siliquastrum*  
*Amelanchier spp.*
  - Fruiting Tree Species  
Cherry, Apple, Plum & Pear
  - Perennial planting
  - Grass
  - Hornbeam hedge

Communal  
Amenity  
Garden

	Typology	Form / Description	Indicative Species Botanical Name	Indicative Species Common Name	Tree Girth/Dia. (cm) or Height(m)	Pot Size and Planting Density	Soil Requirements
Tree A	Multi-Stem Specimen Trees	Structural Trees	<i>Betula utilis 'Jacquemontii'</i>	Birch	18-20cm		Tree pit volume should achieve 12-15cu m Site won soils to be used where available, to achieve - 450mm multipurpose topsoil to BS3882:2015 300mm multipurpose subsoil to BS6041:2015 150mm drainage to Engineers specifications (if needed depending in site conditions and percolation)
Tree B	Multi-Stem Specimen Trees	Structural Trees	<i>Cercis Siliquastrum</i> <i>Amelanchier spp.</i>		Multi-stem, 3.5-4m		Tree pit volume should achieve 12-15cu m Site won soils to be used where available, to achieve - 450mm multipurpose topsoil to BS3882:2015 300mm multipurpose subsoil to BS6041:2015 150mm drainage to Engineers specifications (if needed depending in site conditions and percolation)
Tree C	Fruit Trees	Fruiting Tree Species	<i>Malus domestica 'Fiesta' (D)</i> <i>Pyrus communis 'Louise Bonne of Jersey' (D)</i> <i>Prunus domestica 'Victoria'</i>	Apple Pear Plum	10-12cm 10-12cm 10-12cm		Tree pit volume should achieve 8-10cu m Site won soils to be used where available, to achieve - 450mm multipurpose topsoil to BS3882:2015 300mm multipurpose subsoil to BS6041:2015 150mm drainage to Engineers specifications (if needed depending in site conditions and percolation)
Mix A	Perennial planting	Mix of perennial planting with bulbs and spot planted emergent specimens.	<b>Main body mix:</b> <i>Ajuga reptans 'Atropurpurea'</i> <i>Geranium macrorrhizum 'Album'</i> <i>Hakonechloa macra 'Aureola'</i> <i>Hebe rakaiensis</i> <i>Molinia caerulea arundinacea 'Karl Foerster'</i> <i>Liriope muscari</i> <i>Liriope muscari 'Monroe White'</i> <i>Luzula nivea</i> <i>Stachys byzantina 'Silver Carpet'</i> <i>Stipa tenuissima</i>  <b>Bulbs [30% of Total Area in Swatches]:</b> <i>Allium giganteum</i> <i>Allium sphaerocephalon</i> <i>Narcissus 'Jenny'</i> <i>Narcissus 'Thalia'</i> <i>Tulipa 'Queen of Night'</i>  <b>Emergent / Specimen Species:</b> <i>Salvia x sylvestris 'Mainacht'</i> <i>Sedum 'Herbstfreude'</i> <i>Lavandula angustifolia</i> <i>Miscanthus sinensis 'Yakushima Dwarf'</i>	<b>Main body mix:</b> <i>Bronze Bugle</i> <i>Balkan Cranesbill 'Album'</i> <i>Golden Hakone Grass</i> <i>Rakai Hebe</i> <i>Purple Moor Grass 'Karl Foerster'</i>  <i>Big Blue Lilyturf</i> <i>Big Blue Lilyturf 'Monroe White'</i> <i>Snowy Wood-rush</i> <i>Lambs' Ears 'Silver Carpet'</i> <i>Mexican Feather Grass</i>  <b>Bulbs:</b> <i>Giant Ornamental Onion</i> <i>Round-headed Leek</i> <i>Daffodil 'Jenny'</i> <i>Daffodil 'Thalia'</i> <i>Tulip 'Queen of Night'</i>  <b>Emergent / Specimen Species:</b> <i>Sage 'Mainacht'</i> <i>Stonecrop 'Herbstfreude'</i> <i>True Lavender</i> <i>Eulalia 'Yakushima Dwarf'</i>	Mix of perennial planting with bulbs and spot planted emergent specimens.	3L @ 9no. per m2 3L @ 9no. per m2 3L @ 9no. per m2 3L @ 9no. per m2 3L @ 9no. per m2  3L @ 9no. per m2 3L @ 9no. per m2 3L @ 9no. per m2 3L @ 9no. per m2  10no. per m2 10no. per m2 50no. per m2 50no. per m2 30no. per m2  3L @ 3no. per m2 3L @ 3no. per m2 3L @ 3no. per m2 3L @ 3no. per m2	Site won soils to be used where available, to achieve - 450mm multipurpose topsoil to BS3882:2015. If required to make up levels or where subsoils are not present, 300mm multipurpose subsoil to BS6041:2015.
H1	Hornbeam Hedge	Semi-Evergreen Hedge	<i>Carpinus betulus</i>	Hornbeam	Whip	7 per linear m Double staggered row, plants 300mm apart, 200mm between rows	450mm multipurpose topsoil to BS3882:2015 If required to make up levels or where subsoils are not present, 300mm multipurpose subsoil to BS6041:2015
G1	Germinal Seeds A22 [Low maintenance]	50g/m2	To suppliers recommendations			To suppliers recommendations	150mm multipurpose topsoil to BS3882:2015

ID	RISK	MITIGATION	DATE MITIGATED

**RESIDUAL PROJECT RISKS**

DATE	REV	DESCRIPTION OF REVISION	DRAWN BY	APPROVED BY

**REVISIONS**

STATUS  
**S2 - STAGE 3 - FOR PLANNING**

Ares Landscape Architects LTD  
Gatecrasher,  
51 Eyre Lane  
Sheffield  
S1 4RS  
t: 0114 276 2000  
e: hello@aresdesign.co.uk  
w: ares.eu.com

CLIENT:  
**McBains**

PROJECT TITLE:  
**Parnall Road**

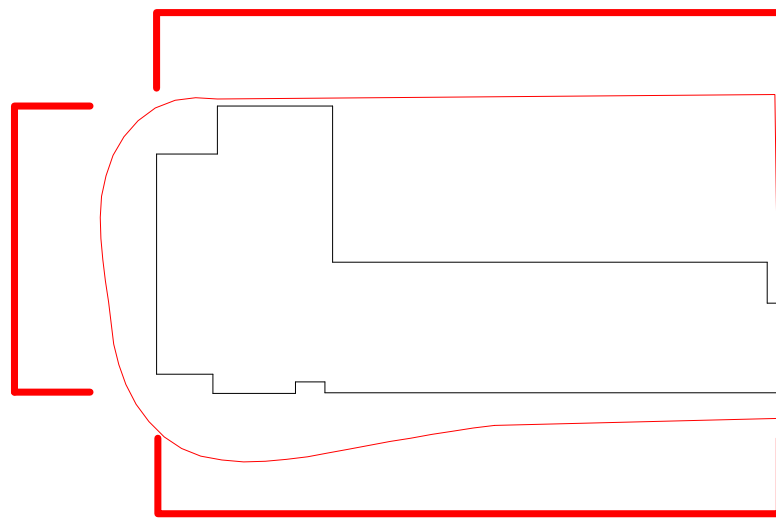
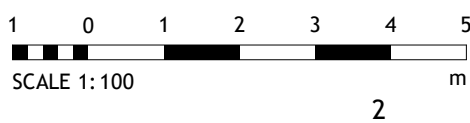
DRAWING TITLE:  
**Planting Strategy**

DRAWING SCALE: 1:100	DRAWN BY: KP	DRAWN DATE: 17/04/2023
PAPER SIZE: A1	APPROVED BY: KS	ALA PROJECT CODE: ALA786

DRAWING NUMBER: <b>786-ALA-00-XX-DR-L-0003</b>	STATUS: <b>S2</b>	REVISION: <b>P01</b>
---	----------------------	-------------------------

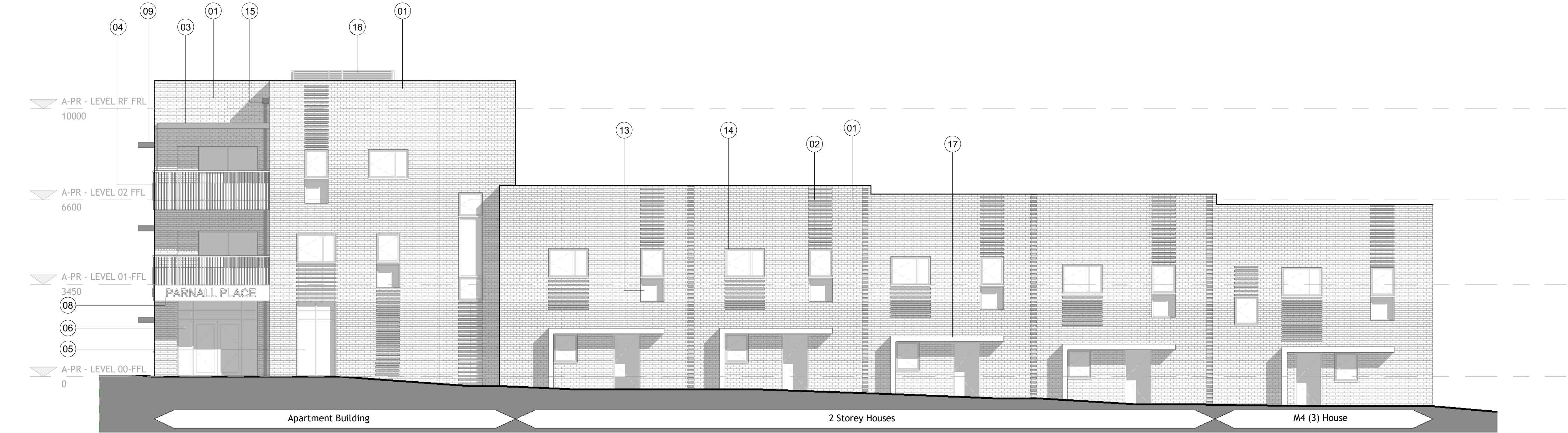


BIM Transmittal Disclaimer  
McBains Ltd makes no express or implied warranties with respect to the character, function, or capabilities of the data (inclusive of 3rd party data incorporated within), or the suitability of the data for any particular purpose beyond those originally intended by McBains Ltd. Please refer to our standard terms and conditions for further details.

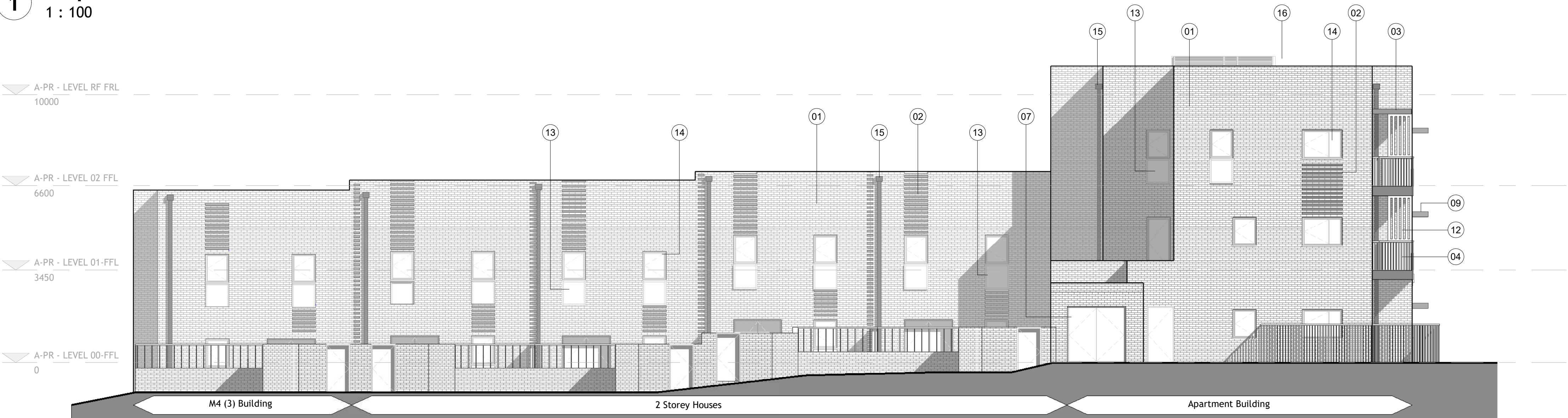


KEY:

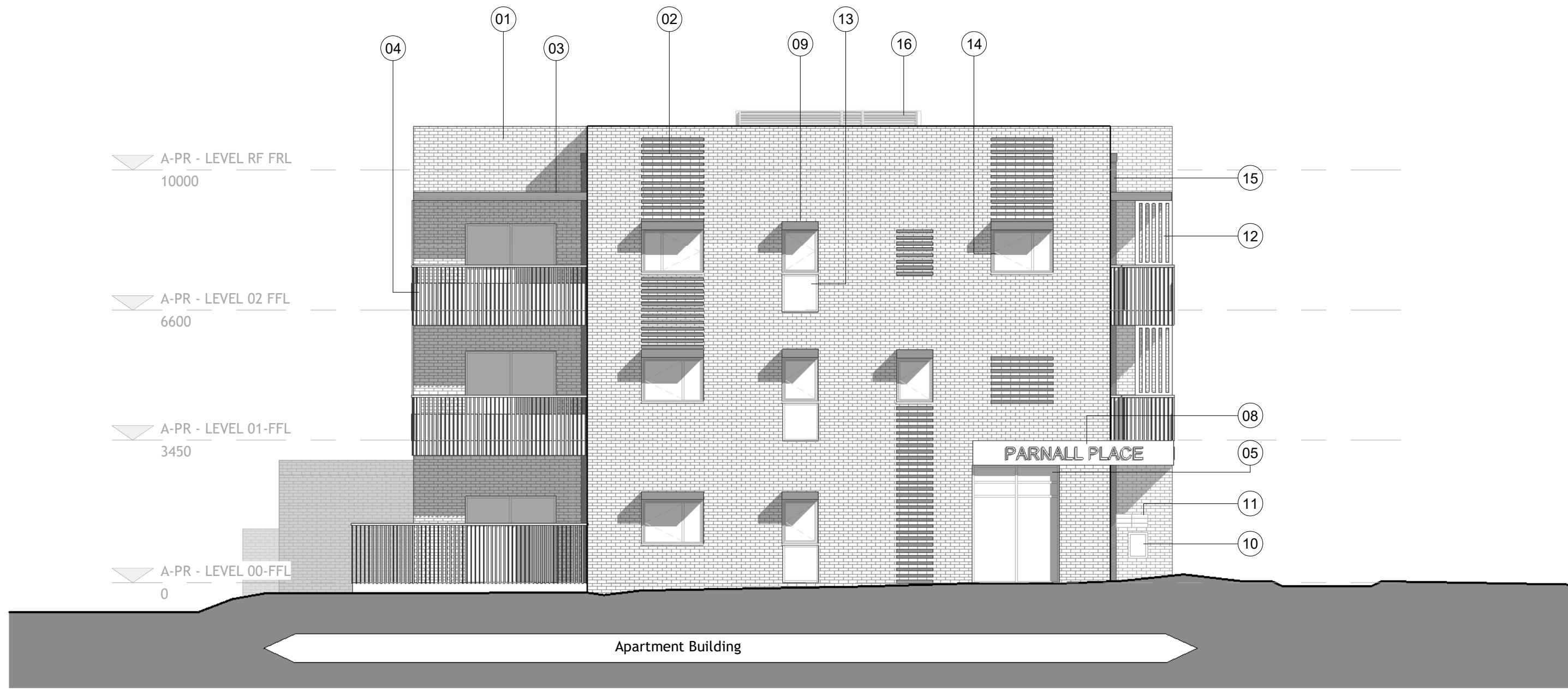
- 01 BUFF FACING BRICKWORK
- 02 RECESSED BRICKWORK FEATURE
- 03 PPC METAL SOLAR SHADING CANOPY
- 04 PPC METAL BALUSTRADE AND BALCONY
- 05 PPC ALUMINIUM FRAMED CURTAIN WALLING AND WINDOWS
- 06 PPC ALUMINIUM FRAMED CURTAIN WALLING AND DOORS
- 07 PPC METAL DOORS
- 08 PPC ALUMINIUM CANOPY WITH SIGNAGE
- 09 PPC METAL SOLAR SHADING CANOPY
- 10 PPC METAL DRY RISER INLET PANEL
- 11 PPC ALUMINIUM THROUGH WALL POST-BOXES
- 12 PPC METAL SOLAR SHADING PANEL
- 13 PPC ALUMINIUM SPANDREL PANEL
- 14 PPC ALUMINIUM FRAMED DOUBLE GLAZED WINDOW
- 15 METAL RWP & HOPPER
- 16 PPC ALUMINIUM LOUVRED ACOUSTIC SCREEN
- 17 METAL / COMPOSITE CANOPY



1 Proposed East Elevation  
1 : 100



2 Proposed East Elevation  
1 : 100



3 Proposed South Elevation  
1 : 100

Rev	Rev Description	Rev Date	Issued by	Issued to
7	Issued for Planning	26.05.23	PO	
6	Issued for Information	15.05.23	PO	
5	Issued for Information	12.05.23	PO	
4	Issued for Information	10.05.23	PO	
3	Issued for Information	25.04.23	PO	
2	Stage 2 Issue	20.01.23	C	
1	Issued for Information	14.12.22	P	

LP	CD	CD
Drawn By	Reviewed By	Approved By
HAR06	12/14/22	1 : 100 @ A1
MCB Number	Date Created	Scale @ A1

**McBains**

McBains Ltd  
5th Fl, 26 Finsbury Square London EC2A 1DS  
+44 (0)20 7786 7900 mcbains.co.uk

Client  
HARLOW DISTRICT COUNCIL

Project  
PARNALL ROAD  
Parnall House, Parnall Road, Harlow, Essex, CM18 7PP

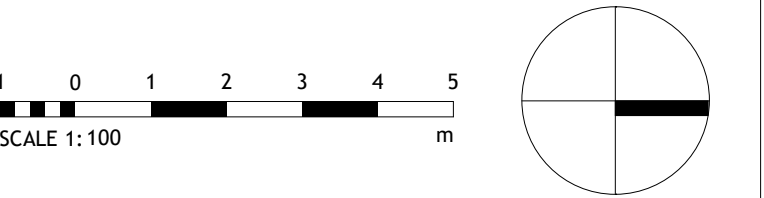
Drawing Title  
PROPOSED GA ELEVATIONS

**ARCHITECTURE**

Drawing / Document Reference										Status
HAR06	MCB	XX	ZZ	DR	A	0500				S4 - P07
Project Id	Originator	Zone	Level	Type	Discipline	Number	Suitability	Revision		



BIM Transmittal Disclaimer  
McBains Ltd makes no express or implied warranties with respect to the character, function, or capabilities of the data (inclusive of 3rd party data incorporated within), or the suitability of the data for any particular purpose beyond those originally intended by McBains Ltd. Please refer to our standard terms and conditions for further details.



NOTE:  
REFER TO LANDSCAPE DOCUMENTATION FOR LANDSCAPE DESIGN



Rev	Rev Description	Rev Date	Issued by	Issued to
8	Issued for Planning	26.05.23	PO	
7	Issued for Information	15.05.23	PO	
6	Issued for Information	12.05.23	PO	
5	Issued for Information	10.05.23	PO	
4	Issued for Information	25.04.23	PO	
3	Issued for Comm.	05.04.23	PO	
2	Stage 2 Issue	20.01.23	C	
1	Issued for Information	14.12.22	P	

LP	MEPB	MEPB
Drawn By	Reviewed By	Approved By
HAR06	12/05/22	1 : 100 @ A1
MCB Number	Date Created	Scale @ A1

**McBains**

McBains Ltd  
5th Fl, 26 Finsbury Square London EC2A 1DS  
+44 (0)20 7786 7900  
mcbains.co.uk

Client  
HARLOW DISTRICT COUNCIL

Project  
PARNALL ROAD  
Parnall House, Parnall Road, Harlow, Essex, CM18 7PP

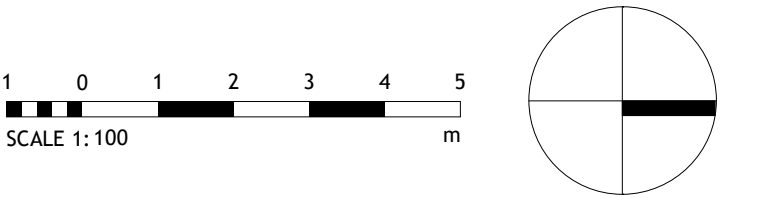
Drawing Title  
PROPOSED GA GROUND FLOOR PLAN

**ARCHITECTURE**

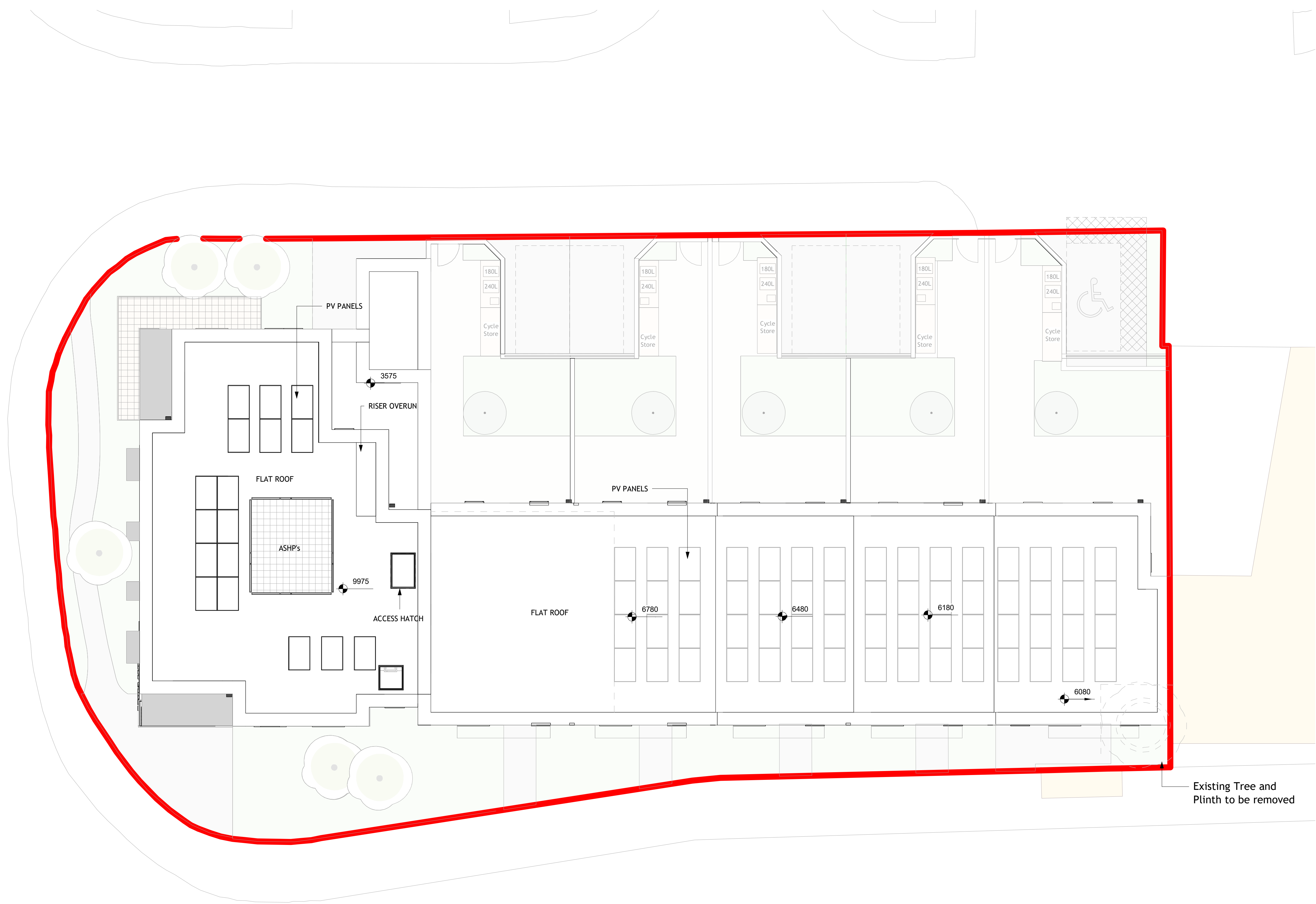
Drawing / Document Reference						Status
HAR06	-	MCB	-	XX	-	00 - DR - A - 0300
Project Mem	Originator	Zone	Level	Type	Discipline	Number
						S4 - P08
						Suitability
						Revision

1 Proposed Ground Floor Plan  
1 : 100

BIM Transmittal Disclaimer  
McBains Ltd makes no express or implied warranties with respect to the character, function, or capabilities of the data (inclusive of 3rd party data incorporated within), or the suitability of the data for any particular purpose beyond those originally intended by McBains Ltd. Please refer to our standard terms and conditions for further details.



NOTE:  
REFER TO LANDSCAPE DOCUMENTATION FOR LANDSCAPE DESIGN  
REFER TO ENERGY STATEMENT AND MEP DESIGN FOR PV LAYOUTS



1 Proposed Roof Plan  
1 : 100

Rev	Rev Description	Rev Date	Issued by	Issued to
8	Issued for Planning	26.05.23	PO	
7	Issued for Information	23.03.23	PO	
6	Issued for Information	15.05.23	PO	
5	Issued for Information	10.05.23	PO	
4	Issued for Information	25.04.23	PO	
3	Issued for Comment	05.04.23	PO	
2	Stage 2 Issue	20.01.23	C	
1	Issued for Information	14.12.22	P	

LP	CD	CD
Drawn By	Reviewed By	Approved By
HAR06	12/06/22	1 : 100 @ A1
MCB Number	Date Created	Scale @ A1

McBains Ltd  
5th Fl, 26 Finsbury Square London EC2A 1DS  
+44 (0)20 7786 7900    mcbains.co.uk

Client  
HARLOW DISTRICT COUNCIL

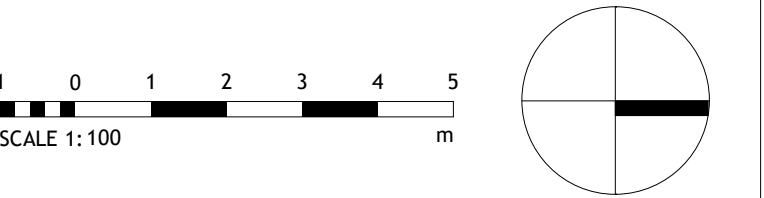
Project  
PARNALL ROAD  
Parnall House, Parnall Road, Harlow, Essex, CM18 7PP

Drawing Title  
PROPOSED GA ROOF PLAN

# ARCHITECTURE

Drawing / Document Reference						Status	
HAR06	MCB	XX	RF	DR	A	0303	S4 - P08
Project Name	Originator	Zone	Level	Type	Discipline	Number	Suitability Revision

BIM Transmittal Disclaimer  
McBains Ltd makes no express or implied warranties with respect to the character, function, or capabilities of the data (inclusive of 3rd party data incorporated within), or the suitability of the data for any particular purpose beyond those originally intended by McBains Ltd. Please refer to our standard terms and conditions for further details.



NOTE:  
REFER TO LANDSCAPE DOCUMENTATION FOR LANDSCAPE DESIGN



1 Proposed First Floor Plan  
1 : 100

Rev	Rev Description	Rev Date	Issued by	Issued to
7	Issued for Planning	26.05.23	PO	
6	Issued for Information	15.05.23	PO	
5	Issued for Information	10.05.23	PO	
4	Issued for Information	25.04.23	PO	
3	Issued for Comment	05.04.23	PO	
2	Stage 2 Issue	20.01.23	C	
1	Issued for Information	14.12.22	P	

LP	CD	CD
Drawn By	Reviewed By	Approved By
HAR06	12/05/22	1 : 100 @ A1
MCB Number	Date Created	Scale @ A1

McBains Ltd  
5th Fl, 26 Finsbury Square London EC2A 1DS  
+44 (0)20 7786 7900  
mcbains.co.uk

Client  
HARLOW DISTRICT COUNCIL

Project  
PARNALL ROAD  
Parnall House, Parnall Road, Harlow, Essex, CM18 7PP

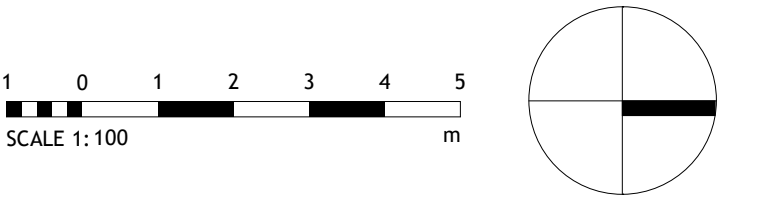
Drawing Title  
PROPOSED GA FIRST FLOOR PLAN

# ARCHITECTURE

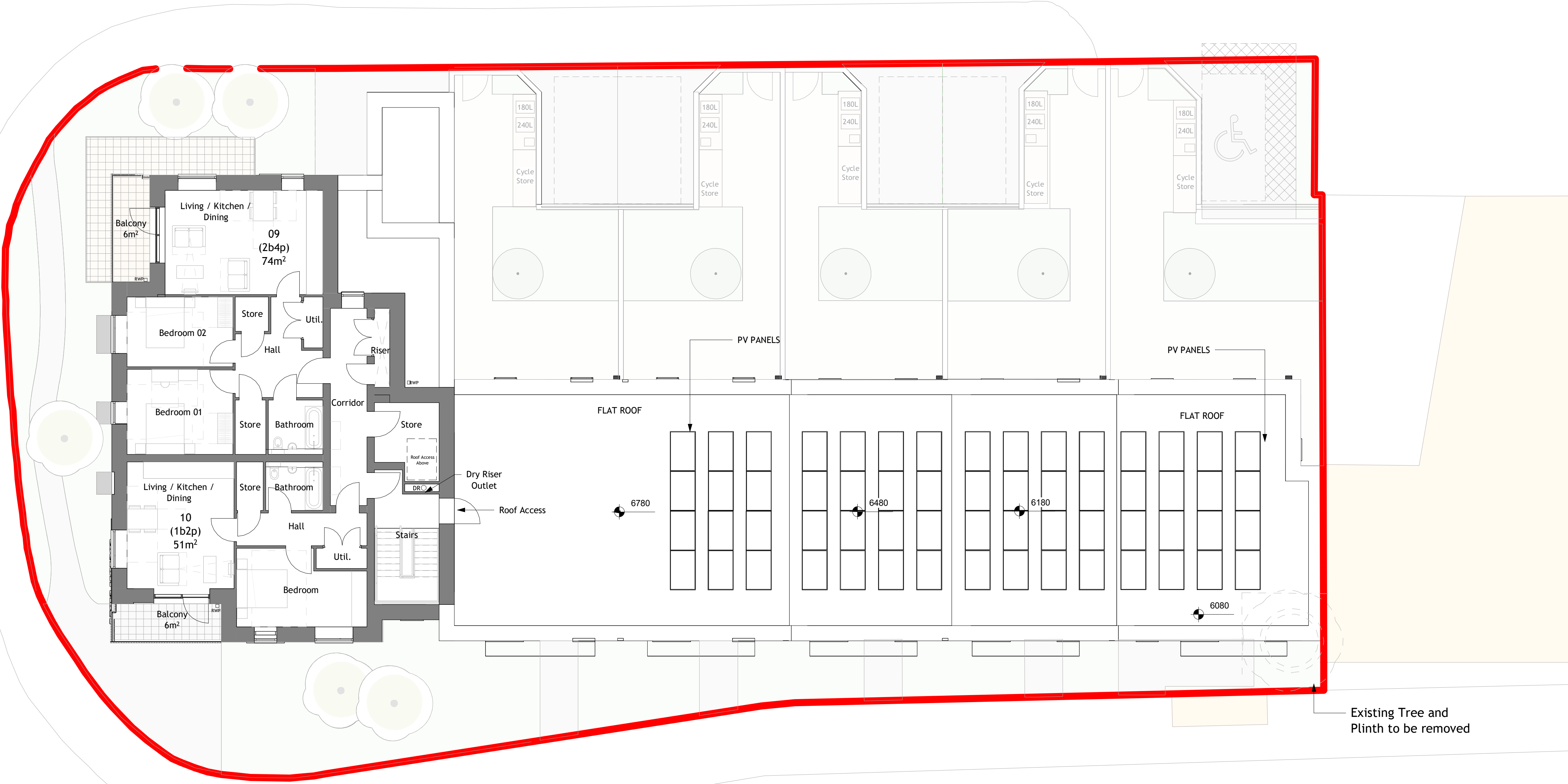
Drawing / Document Reference										Status	
HAR06 - MCB - XX - 01 - DR - A - 0301										S4 - P07	
Project Men	Originator	Zone	Level	Type	Discipline	Number	Suitability	Revision			



BIM Transmittal Disclaimer  
McBains Ltd makes no express or implied warranties with respect to the character, function, or capabilities of the data (inclusive of 3rd party data incorporated within), or the suitability of the data for any particular purpose beyond those originally intended by McBains Ltd. Please refer to our standard terms and conditions for further details.



NOTE:  
REFER TO LANDSCAPE DOCUMENTATION FOR LANDSCAPE DESIGN  
REFER TO ENERGY STATEMENT AND MEP DESIGN FOR PV LAYOUTS



Rev	Rev Description	Rev Date	Issued by	Issued to
7	Issued for Planning	26.05.23	PO	
6	Issued for Information	15.05.23	PO	
5	Issued for Information	10.05.23	PO	
4	Issued for Information	25.04.23	PO	
3	Issued for Comment	05.04.23	PO	
2	Stage 2 Issue	20.01.23	C	
1	Issued for Information	14.12.22	P	

LP	CD	CD
Drawn By	Reviewed By	Approved By
HAR06	12/05/22	1 : 100 @ A1
MCB Number	Date Created	Scale @ A1

**McBains**

McBains Ltd  
5th Fl, 26 Finsbury Square London EC2A 1DS  
+44 (0)20 7786 7900 mcbaains.co.uk

Client  
HARLOW DISTRICT COUNCIL

Project  
PARNALL ROAD  
Parnall House, Parnall Road, Harlow, Essex, CM18 7PP

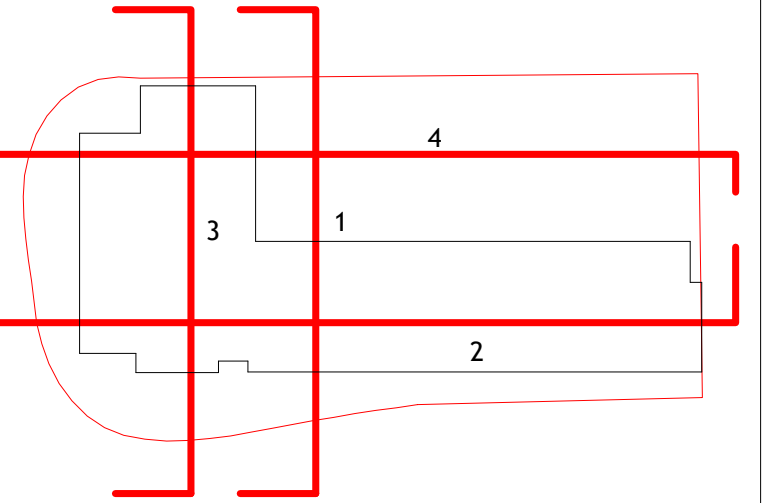
Drawing Title  
PROPOSED GA SECOND FLOOR PLAN

**ARCHITECTURE**

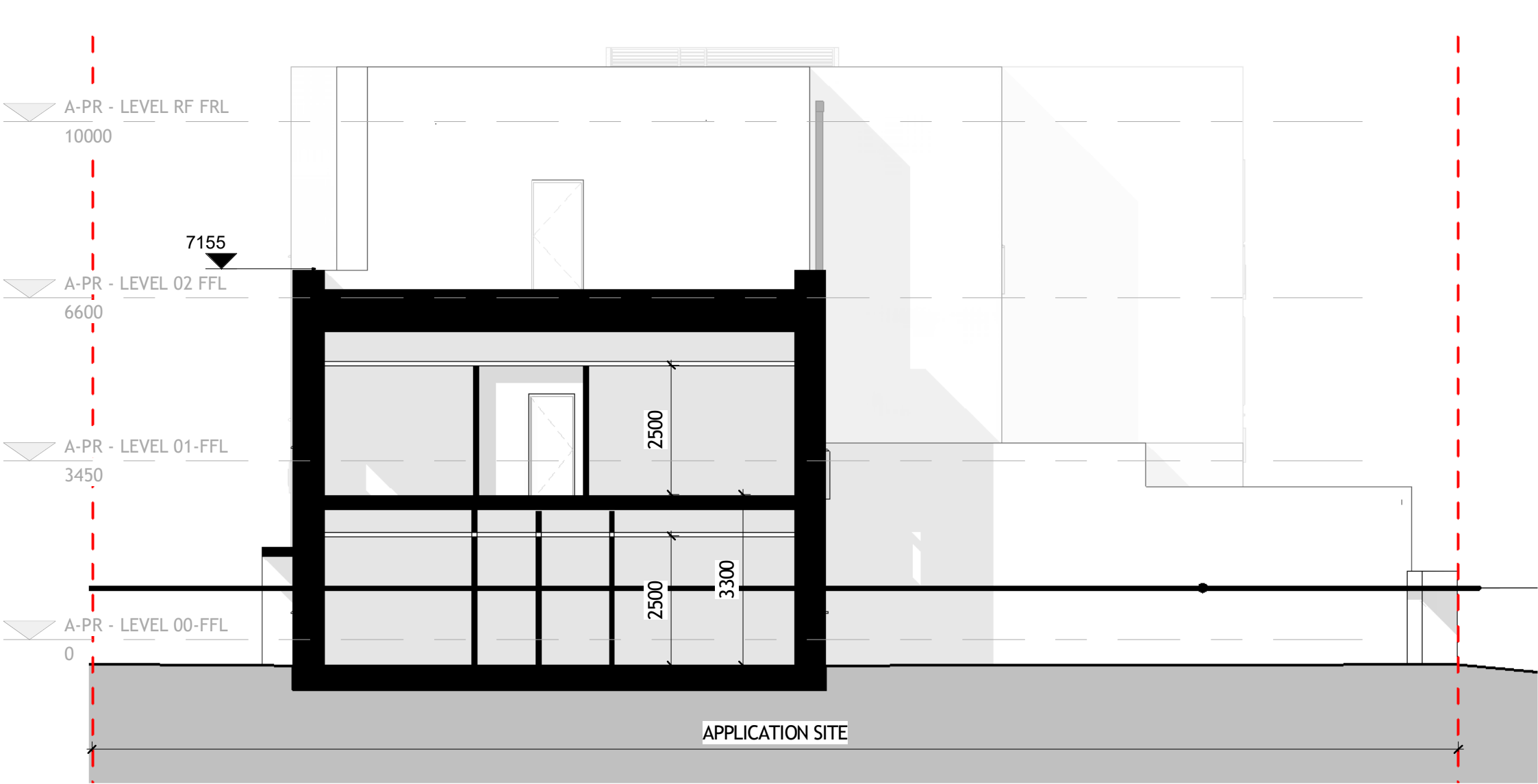
Drawing / Document Reference						Status	
HAR06	MCB	XX	02	DR	A	0302	S4 - P07
Project Men	Originator	Zone	Level	Type	Discipline	Number	Suitability Revision

1 Proposed Second Floor Plan  
1 : 100

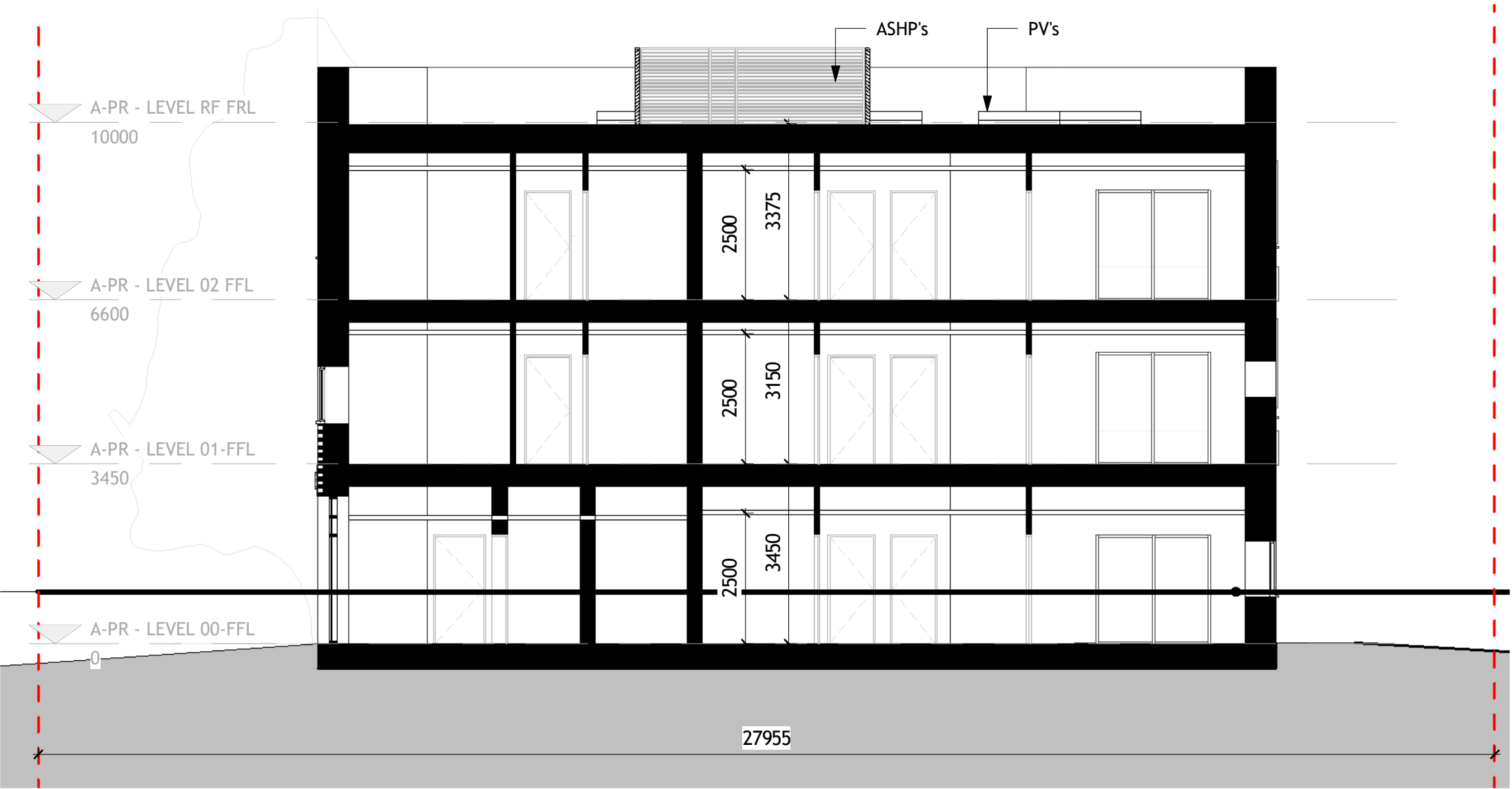




NOTE:  
REFER TO LANDSCAPE DOCUMENTATION FOR LANDSCAPE DESIGN



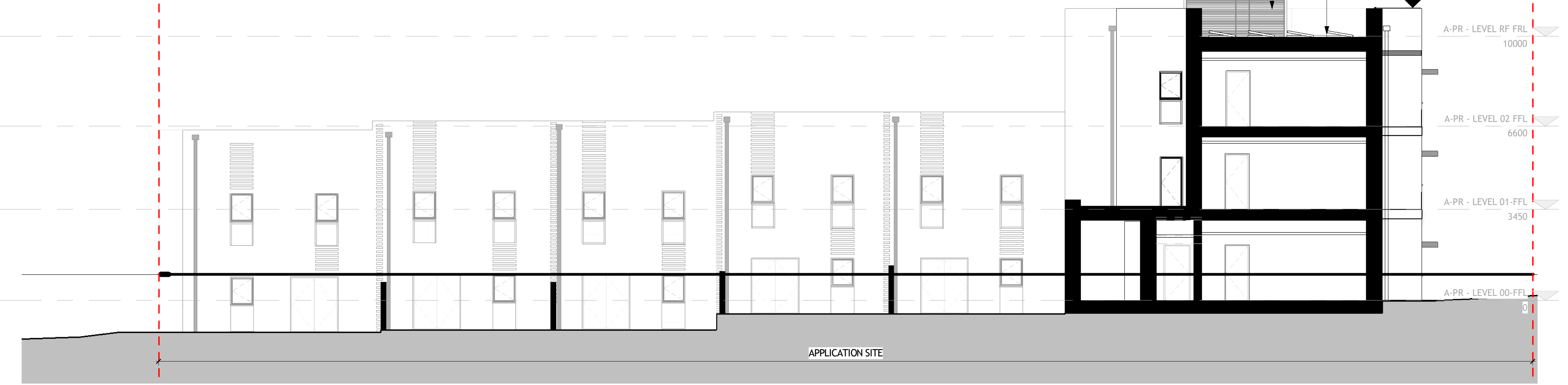
1 Section 01  
1 : 100



3 Section 03  
1 : 100



2 Section 02  
1 : 100



4 Section 04  
1 : 100

Rev	Rev Description	Rev Date	Issued by	Issued to
5	Issued for Planning	16.05.23	PO	
4	Issued for Information	15.05.23	PO	
3	Issued for Information	10.05.23	PO	
2	Issued for Information	25.04.23	PO	
1	Stage 2 Issue	20.01.23	C	

LP	CD	CD
Drawn By	Reviewed By	Approved By
HAR06	01/20/23	1 : 100 @ A1
MCB Number	Date Created	Scale @ A1

**McBains**

McBains Ltd  
5th Fl, 26 Finsbury Square London EC2A 1DS  
+44 (0)20 7786 7900 mcbains.co.uk

Client  
HARLOW DISTRICT COUNCIL

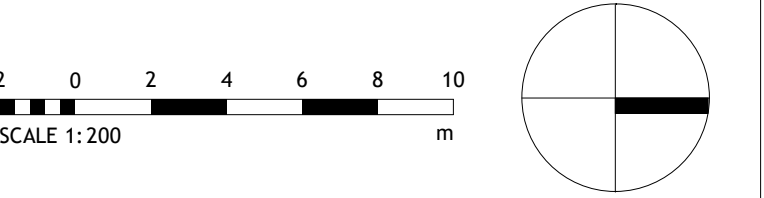
Project  
PARNALL ROAD  
Parnall House, Parnall Road, Harlow, Essex, CM18 7PP

Drawing Title  
PROPOSED GA SECTIONS

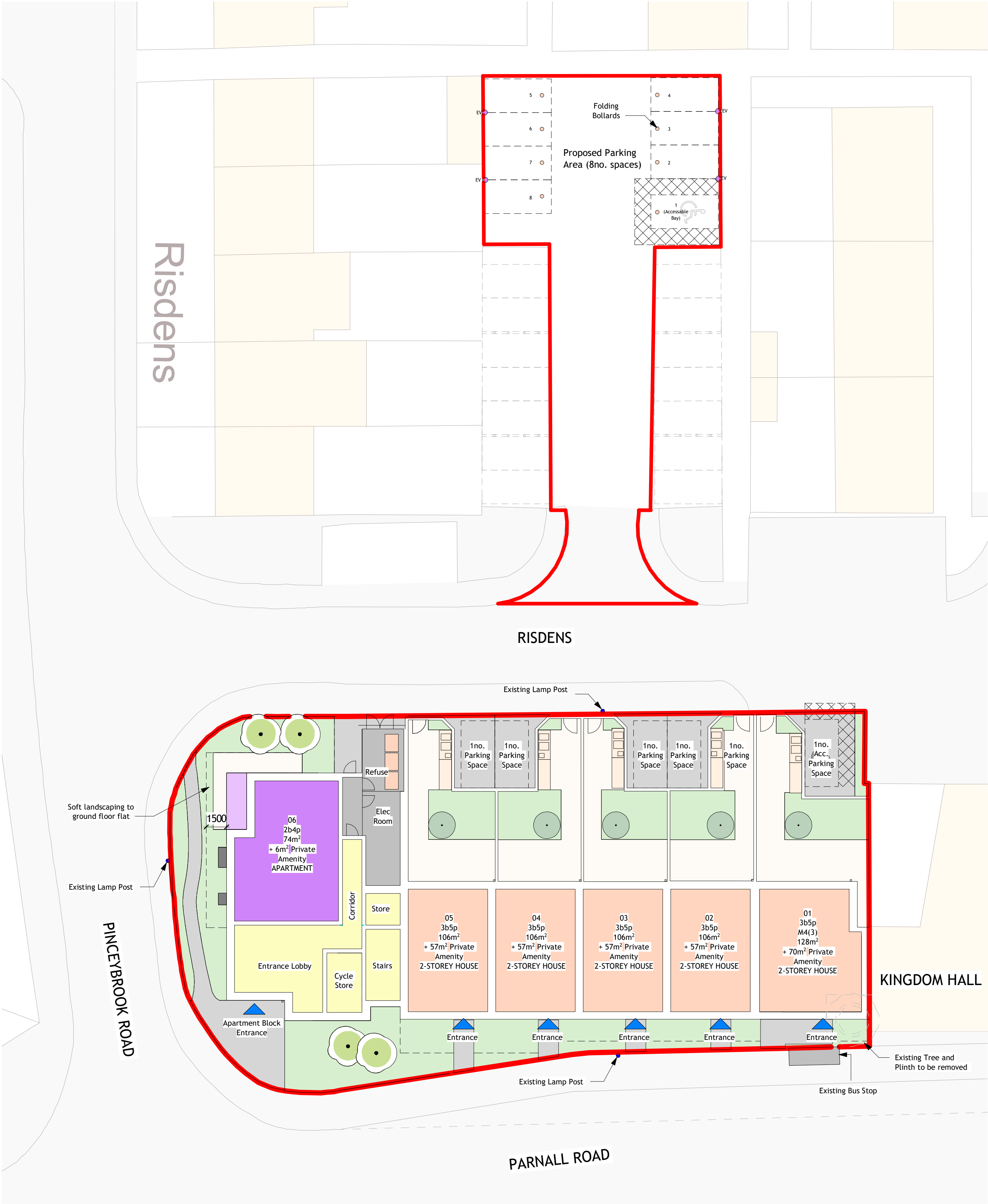
**ARCHITECTURE**

Drawing / Document Reference							Status
HAR06	MCB	XX	ZZ	DR	A	0400	S4 - P05
Project Men	Originator	Zone	Level	Type	Discipline	Number	Suitability Revision

BIM Transmittal Disclaimer  
McBains Ltd makes no express or implied warranties with respect to the character, function, or capabilities of the data (inclusive of 3rd party data incorporated within), or the suitability of the data for any particular purpose beyond those originally intended by McBains Ltd. Please refer to our standard terms and conditions for further details.



- Site Boundary
- EV Charging Point
- Folding Bollard
- Proposed Parking Bay



Rev	Rev Description	Rev Date	Issued by	Issued to
2	Issued for Planning	26.05.23	PO	
1	Issued for Comment	22.05.23	PO	

LP	CD	CD
Drawn By	Reviewed By	Approved By
HAR06	05/22/23	As indicated @ A1
MCB Number	Date Created	Scale @ A1

**McBains**  
McBains Ltd  
5th Fl, 26 Finsbury Square London EC2A 1DS  
+44 (0)20 7786 7900 mcbains.co.uk

Client  
HARLOW DISTRICT COUNCIL

Project  
PARNALL ROAD  
Parnall House, Parnall Road, Harlow, Essex, CM18 7PP

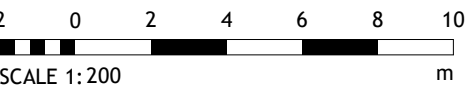
Drawing Title  
Proposed Site Block Plan

# ARCHITECTURE

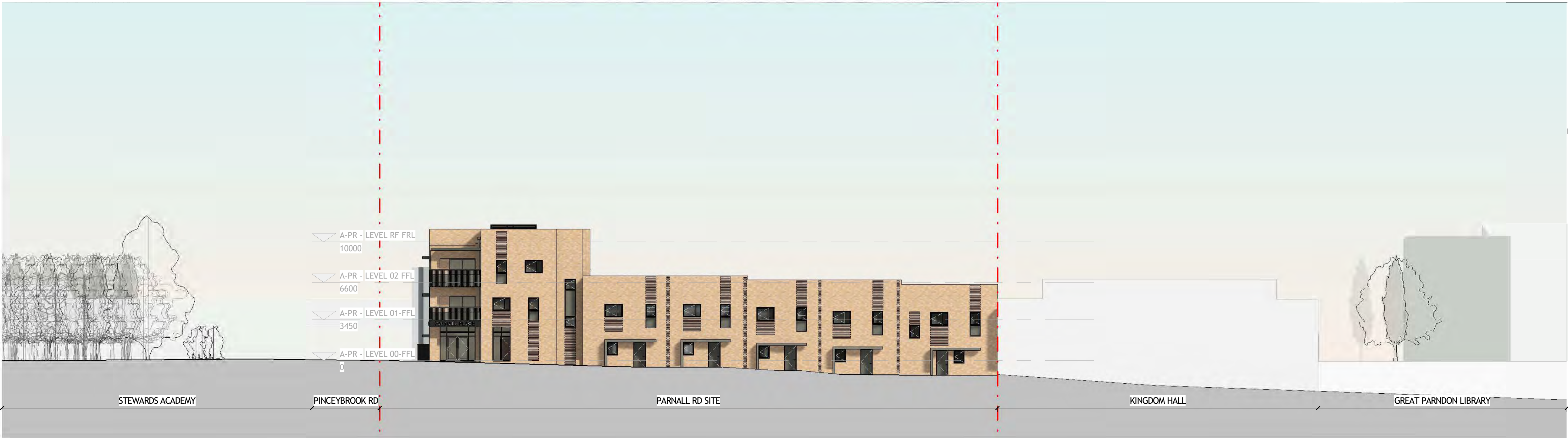
Drawing / Document Reference							Status	
HAR06 - MCB - XX - SI - DR - A - 0140							S4 - P02	
Project Iden	Originator	Zone	Level	Type	Discipline	Number	Suitability	Revision

## 1 PROPOSED SITE BLOCK PLAN 1 : 200





NOTE:  
REFER TO LANDSCAPE DOCUMENTATION FOR LANDSCAPE DESIGN



1 Proposed Site Elevation  
1 : 200



2 Proposed Site Section  
1 : 200

Rev	Rev Description	Rev Date	Issued by	Issued to
5	Issued for Planning	26.05.23	PO	
4	Issued for Information	15.05.23	PO	
3	Issued for Information	10.05.23	PO	
2	Issued for Information	25.04.23	PO	
1	Stage 2 Issue	20.01.23		C

LP	CD	CD
Drawn By	Reviewed By	Approved By
HAR06	01/20/23	1 : 200 @ A1
MCB Number	Date Created	Scale @ A1

**McBains**

McBains Ltd  
5th Fl, 26 Finsbury Square London EC2A 1DS  
+44 (0)20 7786 7900 mcbains.co.uk

Client  
HARLOW DISTRICT COUNCIL

Project  
PARNALL ROAD  
Parnall House, Parnall Road, Harlow, Essex, CM18 7PP

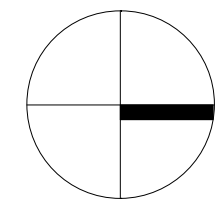
Drawing Title  
PROPOSED SITE ELEVATION & SECTION

**ARCHTIECTURE**

Drawing / Document Reference							Status	
HAR06 - MCB - XX - ZZ - DR - A - 0501							S4 - P05	
Project Iden	Originator	Zone	Level	Type	Discipline	Number	Suitability	Revision

**BIM Transmittal Disclaimer**

McBains Ltd makes no express or implied warranties with respect to the character, function, or capabilities of the data (inclusive of 3rd party data incorporated within), or the suitability of the data for any particular purpose beyond those originally intended by McBains Ltd. Please refer to our standard terms and conditions for further details.



The map illustrates the Parnall Road Site, which is outlined by a red dashed line. The site is bounded by Pinceybrook Road to the west and Parnall Road to the south. To the north of the site is the Risdens building, and to the east is the Kingdom Hall. A bus stop and an existing tree and plinth are located near the site boundary. The map also shows a red solid line and a red dotted line, which likely represent different boundary types or planning boundaries.

CD	CD	MEPB
Drawn By	Reviewed By	Approved By
HAR06	06/09/22	As indicated @ A1
MEPB Member	Date Created	Expiry in 3.5

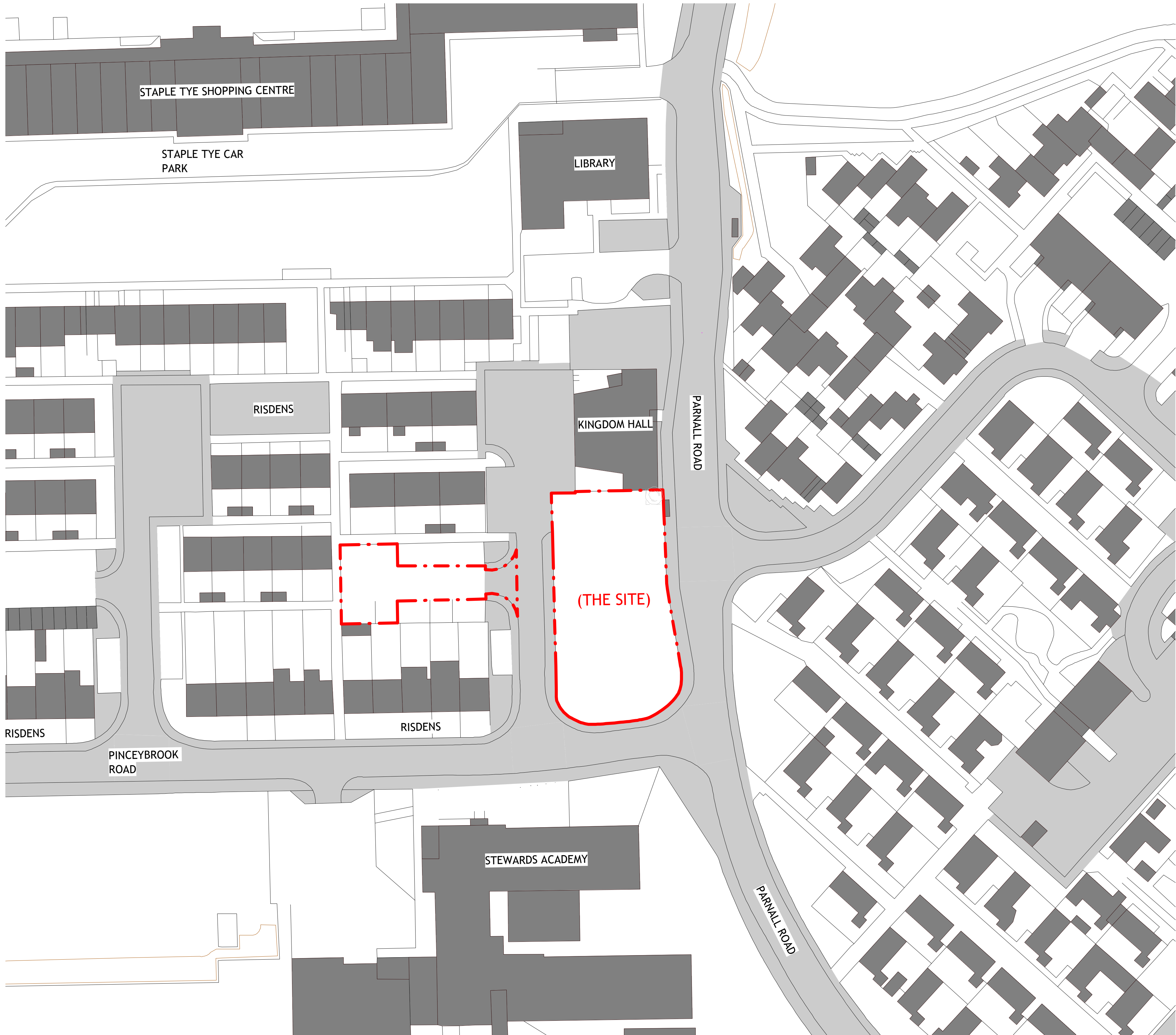
**McBains Ltd**  
5th Fl, 26 Finsbury Square London EC2A 1DS  
+44 (0)20 7786 7900 [mcbains.co.uk](http://mcbains.co.uk)

Project
PARNALL ROAD
Parnall House, Parnall Road, Harlow, Essex, CM18 7PP

## ARCHITECTURE

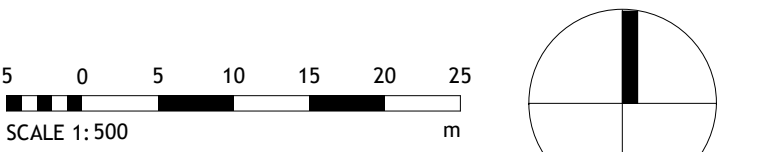
Drawing / Document Reference							Status	
HAR06 - MCB - SI - ZZ - DR - A - 0200							S4 - P03	
Project Iden	Originator	Zone	Level	Type	Discipline	Number	Suitability	Revision





Notes  
Contractors must verify all dimensions on site before commencing any work on shop drawings Do not scale from this drawing  
McBains Ltd copyright

BIM Transmittal Disclaimer  
McBains Ltd makes no express or implied warranties with respect to the character, function, or capabilities of the data (inclusive of 3rd party data incorporated within), or the suitability of the data for any particular purpose beyond those originally intended by McBains Ltd. Please refer to our standard terms and conditions for further details.



Dashed red line denotes application Site Boundary

P03	Issued for Planning	26.05.23
P02	Issued for Information	10.05.23
C1	Stage 2 Issue	20.01.23
Revision	Amendments	Date

CD	CD	MEPB
Drawn By	Reviewed By	Approved By
HAR06	06/09/22	1 : 500 @ A1
MCB Number	Date Created	Scale @ A1

**McBains**

McBains Ltd  
5th Fl, 26 Finsbury Square London EC2A 1DS  
+44 (0)20 7786 7900 mcbains.co.uk

Client  
HARLOW DISTRICT COUNCIL

Project  
PARNALL ROAD  
Parnall House, Parnall Road, Harlow, Essex, CM18 7PP

Drawing Title  
Site Location Plan  
As Existing

**ARCHITECTURE**

Drawing / Document Reference							Status
HAR06	MCB	SI	ZZ	DR	A	0100	S4 - P03
Project Idn	Originator	Zone	Level	Type	Discipline	Number	Suitability Revision

1 Site Location Plan - As Existing  
1 : 500