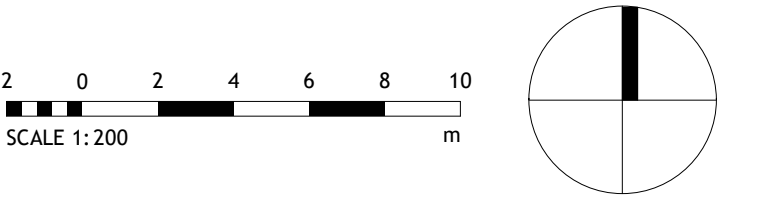


Notes  
Contractors must verify all dimensions on site before commencing any work on shop drawings Do not scale from this drawing  
McBains Ltd copyright

BIM Transmittal Disclaimer  
McBains Ltd makes no express or implied warranties with respect to the character, function, or capabilities of the data (inclusive of 3rd party data incorporated within), or the suitability of the data for any particular purpose beyond those originally intended by McBains Ltd. please refer to our standard terms and conditions for further details.



— SITE BOUNDARY

**1** Existing - Site Plan  
1 : 200

P03	Issued for Planning	21.04.23
P02	Stage 3 Issue	13.06.22
C01	Issued for Planning	25.05.22

Revision	Amendment	Date
LP	CD	MEPB
Drawn by	Reviewed by	Approved by
60715A	05/05/22	1 : 200 @ A1
MCB Number	Date Created	Scale @ A1

**McBains**  
McBains Ltd  
5th Fl, 26 Finsbury Square London EC2A 1DS  
+44 (0)20 7786 7900 mcbaains.co.uk

Client  
HARLOW DISTRICT COUNCIL

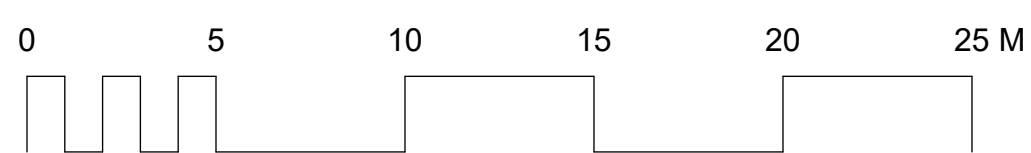
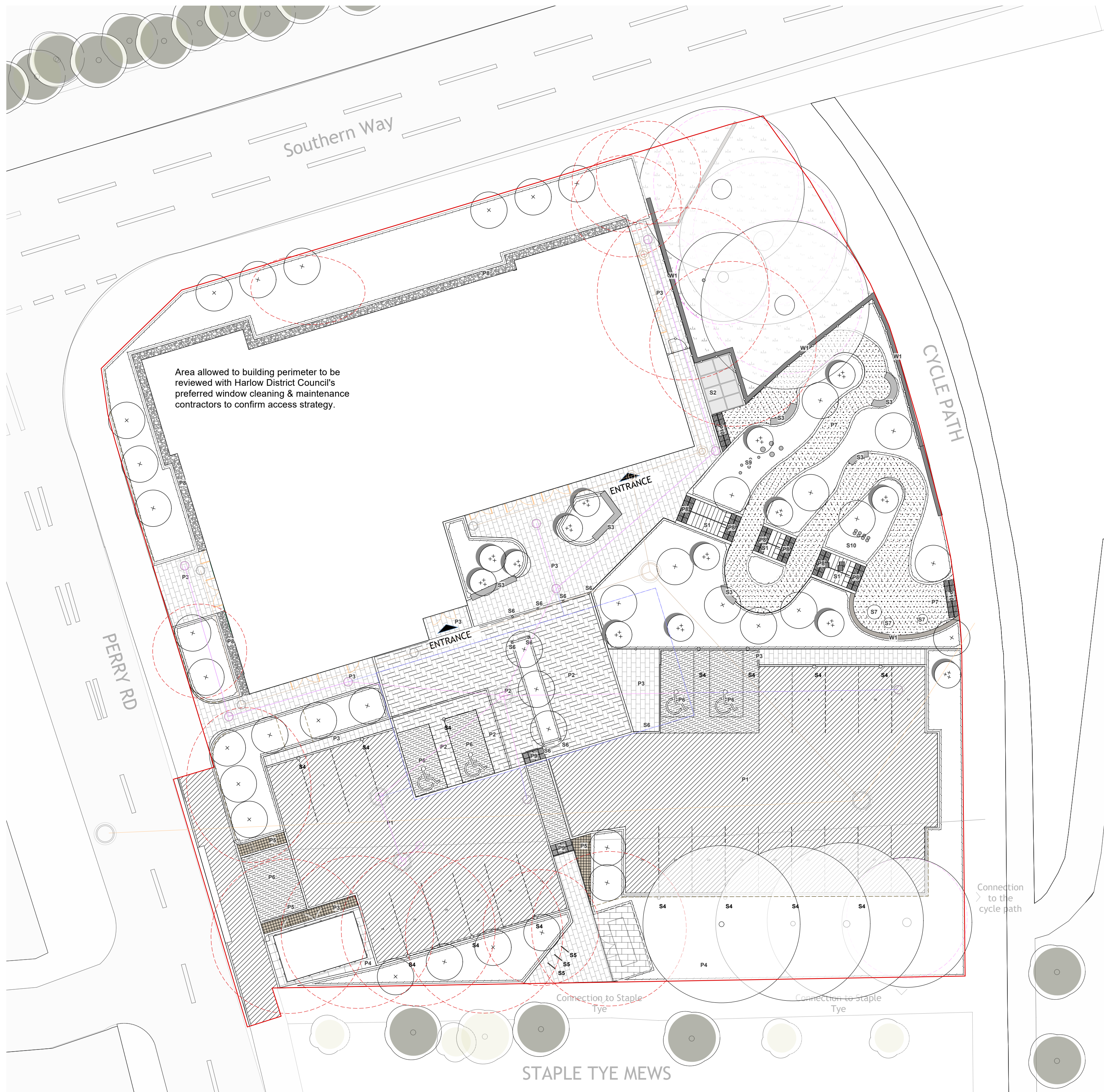
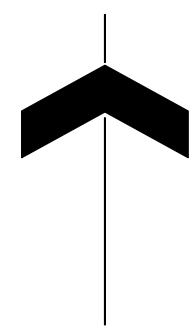
Project  
PERRY ROAD, HARLOW  
ESSEX, CM18 7LT

Drawing Title  
EXISTING SITE PLAN

**ARCHITECTURE**

Drawing / Document Reference							Status
HARPR	MCB	XX	SI	DR	A	0101	S4 - P03
Project Mem	Originator	Zone	Level	Type	Discipline	Number	Suitability Revision





**KEY CONT.**

**Fencing and Structures**

- Pedestrian Restraint System To W1 Wall. Colour to match building To engineers specification. See Note 12.
- Proposed Gates Colour to match building. See Note 12.
- Proposed Retaining Wall [Ref W1] Brick to match building, to engineers' specification.

**Drainage Coordination**

- Proposed Attenuation Tank Volume: 200m<sup>3</sup> Depth: 1m To drainage engineer's specification.
- Indicative Root Barrier TBC with service coordination.
- Proposed Foul Water Sewer and Manhole To drainage engineer's specification.
- Proposed Surface Water Sewer and Manhole To drainage engineer's specification.
- Existing Foul Water Sewer and Manhole To drainage engineer's specification.
- Existing Surface Water Sewer and Manhole To drainage engineer's specification.

**KEY**

**Site**

- Planning Application Boundary
- Extent of Works
- +12.345m Proposed Level
- +Ex / 12.345m Existing Level
- Proposed Building
- Existing Tree
- Existing Tree to be removed

**Planting**

- Proposed Tree Refer to Planting Plan
- Proposed Multi-stem Tree Refer to Planting Plan
- Amenity Planting Refer to Planting Plan
- Shrub Planting Refer to Planting Plan
- Woodland Understorey Planting Refer to Planting Plan

**Paving**

- Vehicular Permeable Macadam [Ref P1] Supplier: Contractor's Choice Product: To Engineer's Specification
- Vehicular Concrete Block Paving [Ref P2] [Non-Permeable Surface] Supplier: To be named or equal Product: Fusion or equal Colour: Silver Size: 300x200x60mm Laid in herringbone bond
- Concrete Block Paving [Ref P3] [Permeable Surface] Supplier: To be named or equal Product: Hydrogave Fusion Duo or Equal Colour: Silver Size: 208x173x60mm/173x173x60mm Laid in stretcher bond
- Concrete Flag Paving [Ref P4] Supplier: To be named or similar Product: Marley Flag or similar Colour: Silver Size: 600x400x50mm Laid in stretcher bond
- Textured Concrete Sets [Ref P5] [Non permeable surface] Supplier: To be named or similar Product: Fusion Sets or similar Colour: Silver Size: 100x100x40mm
- Vehicular Concrete Block Paving [Ref P6] [Non-permeable surface] Supplier: To be named or equal Product: Fusion or equal Colour: Silver Size: 200x100x60mm Laid in herringbone bond
- Permeable Resin Bound Gravel [Ref P7] Supplier: As above or similar Product: Adasbound Resin Bound or Equal Colour: Cyster Size: 6 mm aggregate, depth to Engineers spec
- Proposed Loose Gravel [Ref P8] Supplier: CED Stone or similar or similar Product: Golden First Gravel or similar Size: 10mm
- Corduroy Paving [Ref P8] Supplier: Manthalls or similar Product: Tactile Hazard Warning Paving (Tacturex) Colour: Natural Size: 400x400x50mm
- Bisler Paving [Ref P9] Supplier: Manthalls or similar Product: Tactile Bisler Paving Colour: Natural Size: 400x400x50mm
- Corduroy Paving (Cycle) [Ref P10] Supplier: Manthalls or similar Product: Cycleway Demarcation Concrete Tactile Paving Colour: Natural Size: 400x400x50mm

**Furniture**

- Steps and Handrails [Ref S1] Including built-in ramp for cycle Refer to detail drawing.
- Cycle Shelter [Ref S2] Supplier: Broop or similar Product: Coventry Caretaker Cycle Shelter To match the building Size: 4100x2200x2200mm
- Seating Bench [Ref S3] With and without back Supplier: Broop or similar Product: Heaton Curved Bench Colour: As supplied, metalwork to match building detailing colours Size: Variable
- EV Charging Point [Ref S4] To MEP specification
- Cycle Hoop [Ref S5] Supplier: Broop or similar Product: Curve Cycle Stand Colour: Coloured Size: 800x850mm
- Bollard [Ref S6] Supplier: Broop or similar Product: Semi-Corner Shielded Stainless Steel Bollard Colour: As supplied Size: 1000x75mm (with 300mm root)
- Sculptural Seating [Ref S7] Supplier: Actorn Urban or similar Product: Stone Bench Colour: As supplied Size: Variable
- Bin [Ref S8] Supplier: Metcra or similar Product: Prax PRX115 Colour: Grey Size: 900x250x350mm
- Stepping Logs [Ref S9] Supplier: Pentagon Play or similar Product: Robina Concrete Stepping Logs Colour: As supplied Size: 220mm (h) x 400mm (w) x 650mm (l)
- Weaving Logs [Ref S10] Supplier: Pentagon Play or similar Product: Robina Walk and Stretch (set of 8) Colour: As supplied Size: 160mm (h)

- Note**
- Do not scale from this drawing
  - To be read in conjunction with 740-ALA-XX-XX-RR-L-001\_Risk Assessment and Register
  - To be read in conjunction with all other Landscape Architect's drawings:
    - 740-ALA-00-00-DR-L-0001\_Landscape Illustrative Masterplan
    - 740-ALA-00-00-DR-L-0003\_Planting Plan
    - 740-ALA-00-00-DR-L-0004\_Site Sections
  - To be read in conjunction with all other disciplines drawings and specifications
  - All sub bases to retaining features, walls, paving build-ups to Project Engineers details. Formations levels are to be inspected and approved by the Project Engineer
  - Drainage design, manhole cover positions & final levels to be coordinated with Drainage Engineers
  - Lighting design, to be coordinated with M&E details
  - Landscape contractor is responsible for all area take offs. Areas and quantities are shown for information only
  - Any work to existing trees to be carried out by a suitability qualified Tree Surgeon.
  - Information shown outside red line is for illustrative purposes only and are not part of this scope of works
  - Highway works by others
  - The following elements are intended to be specialist design packages: Architectural metalwork (including pedestrian restraint systems/gates/handrails) and all street furniture. Specialist contractor to carry out site measure and submit package for architect's approval prior to procurement and manufacture.
  - Plant substitutions require approval from Landscape Architect due to safeguarding and health and safety issues.
  - Cycle stands in accordance with TBC SPD3, to be 1.0m apart.

ID	RISK	MITIGATION	DATE	MITIGATED
<b>RESIDUAL PROJECT RISKS</b>				
03/05/2023	P06	Updated information for planning, revised drainage strategy as received and instructed by McBains Tue 25/04/23 (CR, PO P03049711)	GW	KS
27/07/2022	P05	Issued for Planning Approval. Updates to information to include: <ul style="list-style-type: none"> <li>Revised car park surface to permeable macadam</li> </ul>	CJW	KS
20/07/2022	P04	Issued for Planning Approval. Updates to information to include: <ul style="list-style-type: none"> <li>Revised tracking for refuse vehicle</li> <li>Retention of existing trees / indication of generator</li> <li>Modifications to layout for ease of access to bin store</li> </ul>	KS	KS

**REVISIONS**

DATE	REV	DESCRIPTION OF REVISION	DRAWN BY	APPROVED BY

**STATUS**

**S2 - Issued for Planning Approval**

**ares**  
LANDSCAPE ARCHITECTS

Ares Landscape Architects LTD  
Gatecrasher,  
51 Eyre Lane  
Sheffield  
S1 4RB  
t: 0114 276 2000  
e: hello@aresdesign.co.uk  
w: ares.eu.com

**CLIENT:**  
**McBains**

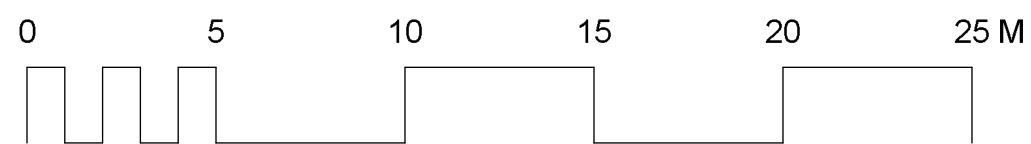
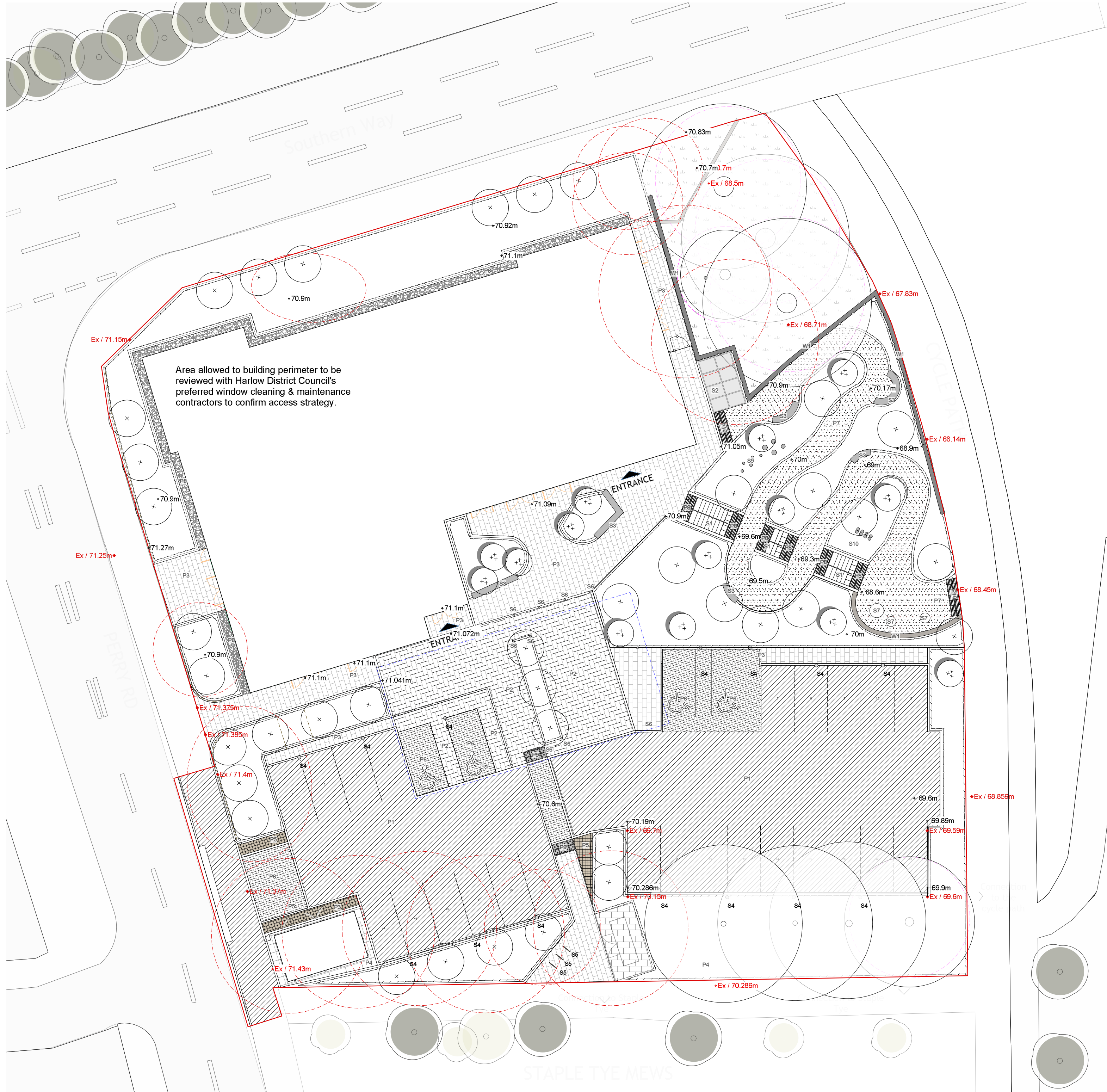
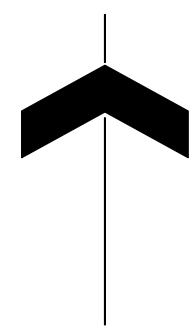
**PROJECT TITLE:**  
**Perry Road**

**DRAWING TITLE:**  
**Landscape General Arrangement**

DRAWING SCALE: 1:200	DRAWN BY: CJW	DRAWN DATE: 17/05/2022
PAPER SIZE: A1	APPROVED BY: KS	ALA PROJECT CODE: ALA740

**DRAWING NUMBER:** 740-ALA-00-XX-DR-L-0002     **STATUS:** S2     **REVISION:** P06





KEY CONT.

Fencing and Structures

- Pedestrian Restraint System  
To W1 Wall. Colour to match building  
To engineers specification. See note 12
- Proposed Gates  
Colour to match building. See note 12
- Proposed Retaining Wall [Ref W1]  
Block to match building. To engineers' specification

Drainage Coordination

- Proposed Attenuation Tank  
Volume: 200m<sup>3</sup>  
Depth: 1m  
To drainage engineer's specification
- Indicative Root Barrier  
TBC with service coordination
- Proposed Foul Water Sewer and Manhole  
To drainage engineer's specification
- Proposed Surface Water Sewer and Manhole  
To drainage engineer's specification
- Existing Foul Water Sewer and Manhole  
To drainage engineer's specification
- Existing Surface Water Sewer and Manhole  
To drainage engineer's specification

KEY

Site

- Planning Application Boundary
- Extent of Works
- Proposed Level  
+12.345m
- Existing Level  
+Ex / 12.345m
- Proposed Building
- Existing Tree
- Existing Tree to be removed

Planting

- Proposed Tree  
Refer to Planting Plan
- Proposed Multi-stem Tree  
Refer to Planting Plan
- Amenity Planting  
Refer to Planting Plan
- Shrub Planting  
Refer to Planting Plan
- Woodland Understorey Planting  
Refer to Planting Plan

Paving

- Vehicular Asphalt Concrete [Ref P1]  
Supplier: Contractor's Choice  
Product: To Engineer's Specification  
Colour: Black
- Vehicular Concrete Block Paving [Ref P2]  
Supplier: Tobemore or similar  
Product: Brenner or similar  
Colour: Arran Stone  
Size: 300x300x50mm  
Laid in herringbone bond  
QXXXX
- Concrete Block Paving [Ref P3]  
Supplier: Tobemore or similar  
Product: Brenner or similar  
Colour: Arran Stone  
Size: 400x300x50mm  
Laid in stretcher bond  
QXXXX
- Concrete Flag Paving [Ref P4]  
Supplier: Tobemore or similar  
Product: Mylar Flag or similar  
Colour: Silver  
Size: 600x400x50mm  
Laid in stretcher bond  
QXXXX
- Textured Concrete Sets [Ref P5]  
Supplier: Tobemore or similar  
Product: Turan Sets or similar  
Colour: Silver  
Size: 100x100x50mm  
QXXXX
- Vehicular Concrete Block Paving [Ref P6]  
Supplier: Tobemore or similar  
Product: Brenner or similar  
Colour: Arran Stone  
Size: 300x100x50mm  
Laid in herringbone pattern  
QXXXX
- Resin Bound Gravel [Ref P7]  
Supplier: Adagray or similar  
Product: Adagray Resin Bound or similar  
Colour: Cyster  
Size: 6mm  
QXXXX
- Proposed Loose Gravel [Ref P8]  
Supplier: CED Stone or similar or similar  
Product: Golden Part Gravel or similar  
Size: 10mm  
QXXXX
- Corduroy Paving [Ref P8]  
Supplier: Marshalls or similar  
Product: Tactile Ribbed Weaving Paving  
(Textured)  
Colour: Natural  
Size: 400x400x50mm  
QXXXX
- Blister Paving [Ref P9]  
Supplier: Marshalls or similar  
Product: Tactile Blister Paving  
Colour: Natural  
Size: 400x400x50mm  
QXXXX
- Corduroy Paving (Cycle) [Ref P10]  
Supplier: Marshalls or similar  
Product: Cycleway Demarcation Concrete  
Textured  
Colour: Natural  
Size: 400x400x50mm  
QXXXX

Furniture

- Steps and Handrails [Ref S1]  
Including built-in ramp for cycle  
Refer to detail drawing
- Cycle Shelter [Ref S2]  
Supplier: Brocas or similar  
Product: Coventry Cycle Shelter  
Colour: To match the building  
Size: 400x250x2200mm  
QXXXX
- Seating Bench [Ref S3]  
With and without back  
Supplier: Brocas or similar  
Product: Seaton Casted Bench  
Colour: As supplied; metalwork to match building branding colours  
Size: Variable  
QXXXX
- EV Charging Point [Ref S4]  
To MEP specification
- Cycle Hoop [Ref S5]  
Supplier: Brocas or similar  
Product: Curve Cycle Hoop  
Colour: Galvanneal  
Size: 800x800mm  
QXXXX
- Bollard [Ref S6]  
Supplier: Brocas or similar  
Product: Slim Dorned Sheffield Stainless Steel Bollard  
Colour: As supplied  
Size: 100x100mm (with 300mm root)  
QXXXX
- Sculptural Seating [Ref S7]  
Supplier: Artform Urban or similar  
Product: Stone Bench  
Colour: As supplied  
Size: Variable  
QXXXX
- Bin [Ref S8]  
Supplier: Mincis or similar  
Product: Free PRO115  
Colour: Ralpinch  
Size: 300x250x300mm  
QXXXX
- Stepping Logs [Ref S9]  
Supplier: Fertigon Play or similar  
Product: Robins Concrete Stepping Logs  
Colour: As supplied  
Size: 220mm (H) x 400mm (W) x 650mm (L)  
QXXXX
- Weaving Logs [Ref S10]  
Supplier: Fertigon Play or similar  
Product: Robins Walk and Stretch (set of 8)  
Colour: As supplied  
Size: 180mm (H)  
QXXXX

Note

- Do not scale from this drawing
- To be read in conjunction with 740-ALA-XX-XX-RR-L-001\_Risk Assessment and Register
- To be read in conjunction with all other Landscape Architect's drawings:  
- 740-ALA-00-00-DR-L-0001\_Landscape Illustrative Masterplan  
- 740-ALA-00-00-DR-L-0003\_Planting Plan  
- 740-ALA-00-00-DR-L-0004\_Site Sections
- To be read in conjunction with all other disciplines drawings and specifications
- All sub bases to retaining features, walls, paving build-ups to Project Engineers details. Formations levels are to be inspected and approved by the Project Engineer
- Drainage design, manhole cover positions & final levels to be coordinated with Drainage Engineers
- Lighting design, to be coordinated with M&E details
- Landscape contractor is responsible for all area take offs. Areas and quantities are shown for information only
- Any work to existing trees to be carried out by a suitability qualified Tree Surgeon.
- Information shown outside red line is for illustrative purposes only and are not part of this scope of works
- Highway works by others
- The following elements are intended to be specialist design packages Architectural metalwork (including pedestrian restraint systems/gates/handrails) and all street furniture. Specialist contractor to carry out site measure and submit package for architect's approval prior to procurement and manufacture.
- Plant substitutions require approval from Landscape Architect due to safeguarding and health and safety issues.
- Cycle stands in accordance with TBC SPD3, to be 1.0m apart.

Refer to Risk Assessment Document- 740-ALA-00-RR-001			
ID	RISK	MITIGATION	DATE MITIGATED
<b>RESIDUAL PROJECT RISKS</b>			

20/07/2022	P04	Issued for Planning Approval. Updates to information to include: - Revised tracking for refuse vehicle - Relocation of existing trees / relocation of generator - Modifications to layout for ease of access to bin store	KS
13/06/2022	P03	Updated following internal review. Drainage Layout added for coordination	CJW
07/06/2022	P02	Issued for Stage 3 Review and Comment	CJW KS

REVISIONS

STATUS  
**S2 - Issued for Planning Approval**

**ares**  
LANDSCAPE ARCHITECTS

Ares Landscape Architects LTD  
Gatecrasher,  
51 Eyre Lane  
Sheffield  
S1 4RB  
t: 0114 276 2000  
e: hello@aresdesign.co.uk  
w: ares.eu.com

CLIENT:  
**McBains**

PROJECT TITLE:  
**Perry Road**

DRAWING TITLE:  
**Landscape General Arrangement**

DRAWING SCALE:  
1:200

PAPER SIZE:  
A1

DRAWN BY:  
CJW

APPROVED BY:  
KS

DRAWN DATE:  
17/05/2022

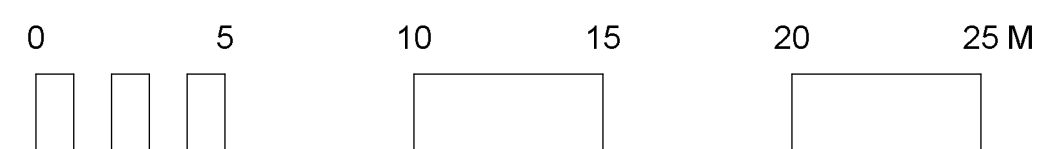
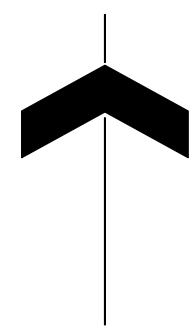
ALA PROJECT CODE:  
ALA740

DRAWING NUMBER:  
**740-ALA-00-XX-DR-L-0002**

STATUS:  
**S2**

REVISION:  
**P04**





Typology	Form / Description	Indicative Species Botanical Name	Indicative Species Common Name	Tree Girth/Dia. (cm) or Multistem Height(m)	Pot Size and Planting Density	Soil Requirements
Tree A	Street Tree Planting	Prunus sargentii 'Rancho'	Sargent's Cherry	30-35cm		Tree pit volume should achieve 12-15cu m Site won soils to be used where available, to achieve: 450mm multipurpose topsoil to BS3882:2015 300mm multipurpose subsoil to BS6041:2015 150mm drainage to Engineers specifications [if needed depending in site conditions and percolation]
Tree B	Car Park Tree Planting	Carpinus betulus 'Frans Fontaine' Tilia cordata	White Birch Small Leaved Lime	25-30cm 25-30cm		Tree pit volume should achieve 12-15cu m Site won soils to be used where available, to achieve - 450mm multipurpose topsoil to BS3882:2015 300mm multipurpose subsoil to BS6041:2015 150mm drainage to Engineers specifications [if needed depending in site conditions and percolation]
Tree C	Multi-Stem Specimen Trees	Cercis Siliquastrum	Judas Tree	Multi-stem, 3.5-4m		Tree pit volume should achieve 12-15cu m Site won soils to be used where available, to achieve - 450mm multipurpose topsoil to BS3882:2015 300mm multipurpose subsoil to BS6041:2015 150mm drainage to Engineers specifications [if needed depending in site conditions and percolation]
Tree C	Native Scrub Shrubs and Multi-stem Trees	Carpinus betulus Crataegus monogyna Euonymus europaeus Prunus spinosa Viburnum opulus	Common Hornbeam Hawthorn Spindle Blackthorn Guelder Rose	Multi-stem, 2-2.5m Multi-stem, 2-2.5m Multi-stem, 1.5-2m Multi-stem, 2-2.5m Multi-stem, 1.5-2m		Tree pit volume should achieve 8-10cu m Site won soils to be used where available, to achieve - 450mm multipurpose topsoil to BS3882:2015 300mm multipurpose subsoil to BS6041:2015 150mm drainage to Engineers specifications [if needed depending in site conditions and percolation]
Mix A	Naturalistic Scrub Planting	Scrub planting ground cover mix with bulbs	<b>Main body mix:</b> Ailanthus glandulosa Euonymus alatus 'Compactus' Euphorbia ceratocarpa Geranium macrorrhizum 'White-Ness' Miscanthus sinensis 'Morning Light' Molinia caerulea arundinacea 'Karl Foerster' Persicaria affinis 'Darjeeling Red' Rosmarinus officinalis 'Miss Jessopp's' <b>Bulbs:</b> Allium giganteum Allium sphaerocephalon Narcissus 'Jenny' Narcissus 'Thalia' Tulipa 'Queen of Night'	<b>Main body mix:</b> Lady's Mantle Winged spindle Sicily Spurge Geranium 'White-Ness' Chinese Silver Grass Purple Moor Grass 'Karl Foerster' Knotweed 'Darjeeling Red' Rosemary 'Miss Jessopp Upright' <b>Bulbs:</b> Giant Ornamental Onion Round-headed Leek Daffodil 'Jenny' Daffodil 'Thalia' Tulip 'Queen of Night'	3L @ 9no. per m2 3L @ 9no. per m2 3L @ 9no. per m2 3L @ 9no. per m2 3L @ 9no. per m2 3L @ 9no. per m2 3L @ 9no. per m2 10no. per m2 10no. per m2 50no. per m2 50no. per m2 30no. per m2	Site won soils to be used where available, to achieve - 450mm multipurpose topsoil to BS3882:2015. If required to make up levels or where subsoils are not present, 300mm multipurpose subsoil to BS6041:2015.
Mix B	Swathe Planting	Swathes of perennial planting with bulbs and spot planted emergent specimens.	<b>Main body mix:</b> Ailanthus glandulosa Geranium macrorrhizum 'Album' Hakonechloa macra 'Aureola' Hebe rakaiensis Molinia caerulea arundinacea 'Karl Foerster' Liriope muscari Liriope muscari 'Monroe White' Luzula nivea Stachys byzantina 'Silver Carpet' Stipa tenuissima <b>Bulbs:</b> Allium giganteum Allium sphaerocephalon Narcissus 'Jenny' Narcissus 'Thalia' Tulipa 'Queen of Night' <b>Emergent / Specimen Species:</b> Salix x sylvestris 'Mainacht' Sedum 'Herbstfreude' Lavandula angustifolia Miscanthus sinensis 'Yakushima Dwarf'	Bronze Bugle Balkan Cranesbill 'Album' Golden Hakone Grass Rakai Hebe Purple Moor Grass 'Karl Foerster' Big Blue Lilyturf Big Blue Lilyturf 'Monroe White' Snowy Wood-rush Lamb's Ears 'Silver Carpet' Mexican Feather Grass Giant Ornamental Onion Round-headed Leek Daffodil 'Jenny' Daffodil 'Thalia' Tulip 'Queen of Night' Sage 'Mainacht' Stonecrop 'Herbstfreude' True Lavender Eulalia 'Yakushima Dwarf'	3L @ 9no. per m2 3L @ 9no. per m2 3L @ 9no. per m2 3L @ 9no. per m2 3L @ 9no. per m2 3L @ 9no. per m2 3L @ 9no. per m2 3L @ 9no. per m2 3L @ 9no. per m2 3L @ 9no. per m2 10no. per m2 10no. per m2 50no. per m2 50no. per m2 30no. per m2 3L @ 3no. per m2 3L @ 3no. per m2 3L @ 3no. per m2 3L @ 3no. per m2	Site won soils to be used where available, to achieve - 450mm multipurpose topsoil to BS3882:2015. If required to make up levels or where subsoils are not present, 300mm multipurpose subsoil to BS6041:2015.
Seeding	Woodland Understory Seed Mix	A mixture of species which prefer or tolerate semi shade conditions.	Alliaria petiolata Allium ursinum Arctium minus Campanula trachelium Chaerophyllum temulum Digitalis purpurea Filipendula ulmaria Galium album Geum urbanum Hyacinthoides non-scripta Iris foetidissima Prunella vulgaris Silene dioica Torilis japonica Vicia cracca	Garlic Mustard Ranunculus Lesser Burdock Nettle-leaved Bellflower Rough Chervil Foxglove Meadowsweet Hedge Bedstraw Wood Avenas Bluebell Gladdon Selfheal Red Campion Upright Hedge-parsley Tufted Vetch	Seed/plug plan to supplier's recommendation	Existing soil profile to be retained with additional 75mm multipurpose topsoil to BS3882:2015. Site won soils to be used where available.

- Note**
- Do not scale from this drawing
  - To be read in conjunction with 740-ALA-XX-XX-RR-L-001\_Risk Assessment and Register
  - To be read in conjunction with all other Landscape Architect's drawings:  
- 740-ALA-00-00-DR-L-0001\_Landscape Illustrative Masterplan  
- 740-ALA-00-00-DR-L-0003\_Planting Plan  
- 740-ALA-00-00-DR-L-0004\_Site Sections
  - To be read in conjunction with all other disciplines drawings and specifications
  - All sub bases to retaining features, walls, paving build-ups to Project Engineers details. Formations levels are to be inspected and approved by the Project Engineer
  - Drainage design, manhole cover positions & final levels to be coordinated with Drainage Engineers
  - Lighting design, to be coordinated with M&E details
  - Landscape contractor is responsible for all area take offs. Areas and quantities are shown for information only
  - Any work to existing trees to be carried out by a suitability qualified Tree Surgeon.
  - Information shown outside red line is for illustrative purposes only and are not part of this scope of works
  - Highway works by others
  - The following elements are intended to be specialist design packages: Architectural metalwork (including pedestrian restraint systems/gates/handrails) and all street furniture. Specialist contractor to carry out site measure and submit package for architect's approval prior to procurement and manufacture.
  - Plant substitutions require approval from Landscape Architect due to safeguarding and health and safety issues.
  - Cycle stands in accordance with TBC SPD3, to be 1.0m apart.



Refer to Risk Assessment Document: 740-ALA-00-RR-001		
ID	RISK	DATE MITIGATED

**RESIDUAL PROJECT RISKS**

DATE	REV	DESCRIPTION OF REVISION	DRAWN BY	APPROVED BY
20/07/2022	P04	Issued for Planning Approval. Updates to information to include: - Revised tracing for refuse vehicle - Retention of existing trees / relocation of generator - Modifications to layout for ease of access to bin store	CJW	KS
13/06/2022	P03	Updated following internal review	CJW	KS
08/06/2022	P02	Issued for Stage 3 Review and Comment	CJW	KS

**REVISIONS**

STATUS  
**S2 - Issued for Planning Approval**

**ares**  
LANDSCAPE ARCHITECTS

Ares Landscape Architects LTD  
Gatecrasher,  
51 Eyre Lane  
Sheffield  
S1 4RB  
t: 0114 276 2000  
e: hello@aresdesign.co.uk  
w: ares.eu.com

CLIENT:  
**McBains**

PROJECT TITLE:  
**Perry Road**

DRAWING TITLE:  
**Planting Plan**

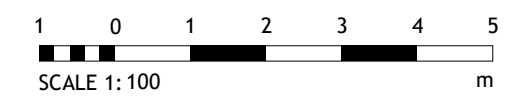
DRAWING SCALE: 1:200	DRAWN BY: CJW	DRAWN DATE: 17/05/2022
PAPER SIZE: A1	APPROVED BY: KS	ALA PROJECT CODE: ALA740

DRAWING NUMBER: **740-ALA-00-XX-DR-L-0003** STATUS: **S2** REVISION: **P04**



Notes  
Contractors must verify all dimensions on site before commencing any work on shop drawings. Do not scale from this drawing.  
McBains Ltd copyright

BIM Transmittal Disclaimer  
McBains Ltd makes no express or implied warranties with respect to the character, function, or capabilities of the data (inclusive of 3rd party data incorporated within), or the suitability of the data for any particular purpose beyond those originally intended by McBains Ltd. please refer to our standard terms and conditions for further details.



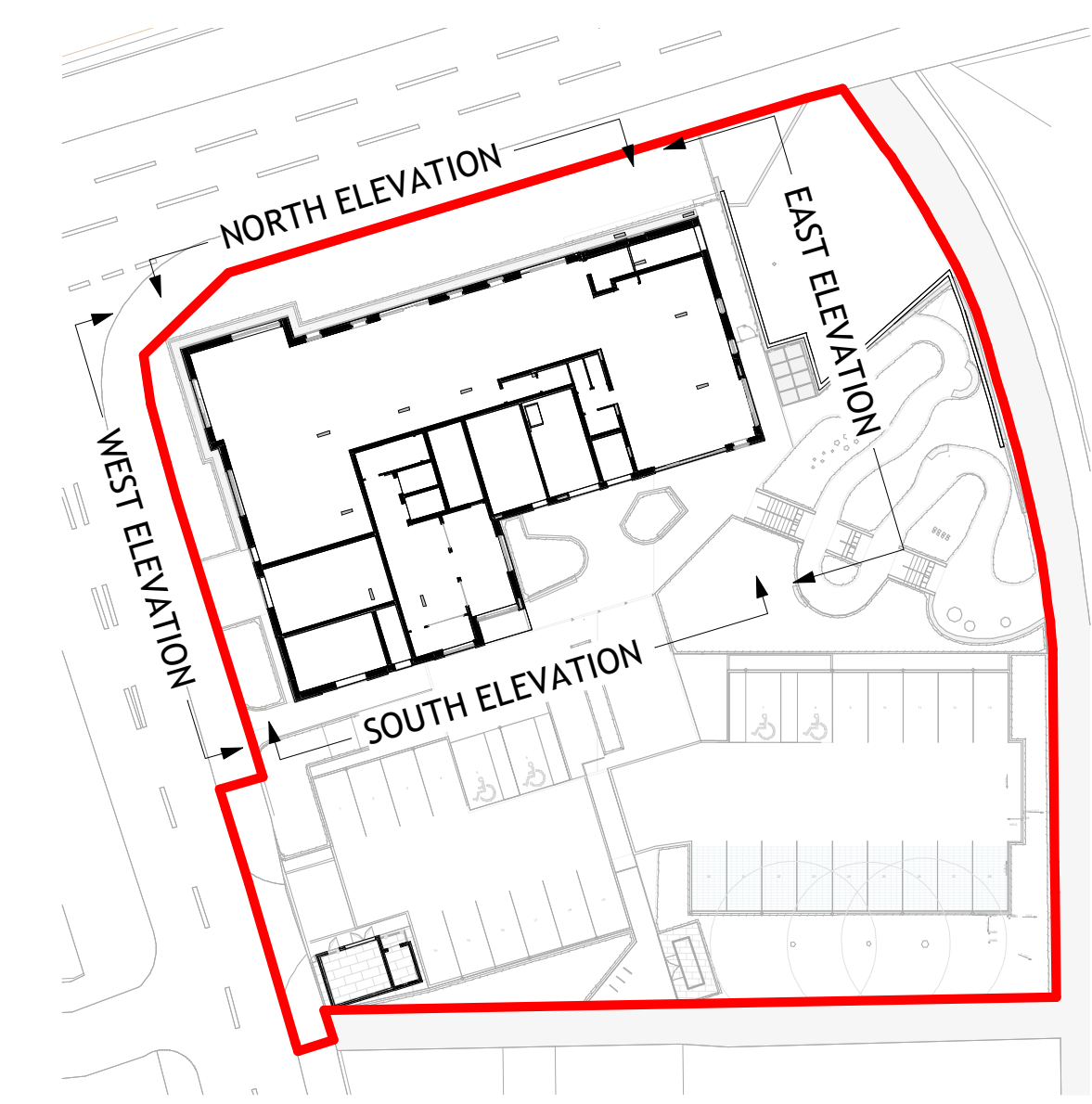
**1 Proposed North Elevation**  
1 : 100

**KEY:**

- 01 BUFF FACING BRICKWORK - TYPE 01
- 02 GREY/BLACK FACING BRICKWORK - TYPE 02
- 03 SOLDIER BRICKWORK COURSE
- 04 VERTICAL PROFILED PPC ALUMINIUM CLADDING
- 05 PPC ALUMINIUM BRISE SOLIEL
- 06 PPC METAL BALUSTRADE AND BALCONY
- 07 PPC ALUMINIUM FRAMED DOUBLE GLAZED WINDOWS
- 08 PPC ALUMINIUM FRAMED CURTAIN WALLING & WINDOWS
- 09 PPC METAL DOORS WITH LOUVRED PANEL ABOVE
- 10 PPC ALUMINIUM CANOPY WITH SIGNAGE
- 11 PPC ALUMINIUM LOUVRED ACOUSTIC SCREEN
- 12 PPC ALUMINIUM THROUGH WALL POST-BOXES
- 13 PPC ALUMINIUM LOUVRES
- 14 PPC ALUMINIUM FRAMED CURTAIN WALLING & ENTRANCE DOORS
- 15 PPC ALUMINIUM SPANDEL PANEL
- 16 PPC ALUMINIUM PARAPET CAPPING
- 17 PPC METAL SOLAR/PRIVACY SCREENING
- 18 PPC METAL VIDEO ENTRY PANEL
- 19 PPC METAL DRY RISER INLET PANEL
- 20 BUILDING/ROAD SIGNAGE
- 21 PPC ALUMINIUM FRAMED DOUBLE GLAZED SLIDING DOORS



**2 Proposed East Elevation**  
1 : 100



KEY PLAN

Revision	Amendment	Date
P010	Issued for Planning	21.04.23
P09	Issued for Information	31.03.23
C08	Stage 2 Issue Amended	07.02.23
C07	Stage 2 Issue	20.01.23
P06	Stage 3 Issue	13.06.22
C05	Issued for Planning	25.05.22
P04	Issued for Coordination	18.05.22
P03	Issued for Coordination	12.05.22
P02	Issued for Coordination - Window Types Updated	03.05.22
P01	Issued for Coordination	29.04.22

Revision	Amendment	Date
LP	CD	MEPB
Drawn by	Reviewed by	Approved by
60715A	07/02/2023	As indicated @ A1
MCB Number	Date Created	Scale @ A1

**McBains**

McBains Ltd  
5th Fl, 26 Finsbury Square London EC2A 1DS  
+44 (0)20 7786 7900  
mcbains.co.uk

Client  
HARLOW DISTRICT COUNCIL

Project  
PERRY ROAD, HARLOW  
ESSEX, CM18 7LT

Drawing Title  
PROPOSED ELEVATIONS SHEET 1 OF 2

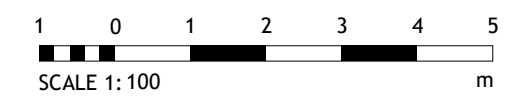
**ARCHITECTURE**

Project Ref	Originator	Zone	Level	Type	Discipline	Number	Suitability	Revision
HARPR - MCB - XX - ZZ - DR - A - 0130						S4 - P010		



Notes  
Contractors must verify all dimensions on site before commencing any work on shop drawings. Do not scale from this drawing.  
McBains Ltd copyright

BIM Transmittal Disclaimer  
McBains Ltd makes no express or implied warranties with respect to the character, function, or capabilities of the data (inclusive of 3rd party data incorporated within), or the suitability of the data for any particular purpose beyond those originally intended by McBains Ltd. please refer to our standard terms and conditions for further details.



**KEY:**

- 01 BUFF FACING BRICKWORK - TYPE 01
- 02 GREY/BLACK FACING BRICKWORK - TYPE 02
- 03 SOLDIER BRICKWORK COURSE
- 04 VERTICAL PROFILED PPC ALUMINIUM CLADDING
- 05 PPC ALUMINIUM BRISE SOLIEL
- 06 PPC METAL BALUSTRADE AND BALCONY
- 07 PPC ALUMINIUM FRAMED DOUBLE GLAZED WINDOWS
- 08 PPC ALUMINIUM FRAMED CURTAIN WALLING & WINDOWS
- 09 PPC METAL DOORS WITH LOUVRED PANEL ABOVE
- 10 PPC ALUMINIUM CANOPY WITH SIGNAGE
- 11 PPC ALUMINIUM LOUVRED ACOUSTIC SCREEN
- 12 PPC ALUMINIUM THROUGH WALL POST-BOXES
- 13 PPC ALUMINIUM LOUVRES
- 14 PPC ALUMINIUM FRAMED CURTAIN WALLING & ENTRANCE DOORS
- 15 PPC ALUMINIUM SPANDREL PANEL
- 16 PPC ALUMINIUM PARAPET CAPPING
- 17 PPC METAL SOLAR/PRIVACY SCREENING
- 18 PPC METAL VIDEO ENTRY PANEL
- 19 PPC METAL DRY RISER INLET PANEL
- 20 BUILDING/ROAD SIGNAGE
- 21 PPC ALUMINIUM FRAMED DOUBLE GLAZED SLIDING DOORS

Revision	Amendment	Date
P010	Issued for Planning	21.04.23
P09	Issued for Information	31.03.23
C08	Stage 2 Issue Amended	07.02.23
C07	Stage 2 Issue	20.01.23
P06	Stage 3 Issue	13.06.22
C05	Issued for Planning	25.05.22
P04	Issued for Coordination	18.05.22
P03	Issued for Coordination	12.05.22
P02	Issued for Coordination - Window Types Updated	03.05.22
P01	Issued for Coordination	29.04.22

LP	CD	MEPB
Drawn by	Reviewed by	Approved by
60715A	07/02/2023	As indicated @ A1
MCB Number	Date Created	Scale @ A1

**McBains**  
McBains Ltd  
5th Fl, 26 Finsbury Square London EC2A 1DS  
+44 (0)20 7786 7900  
mcbains.co.uk

Client  
HARLOW DISTRICT COUNCIL

Project  
PERRY ROAD, HARLOW  
ESSEX, CM18 7LT

Drawing Title  
PROPOSED ELEVATIONS SHEET 2 OF 2

**ARCHITECTURE**

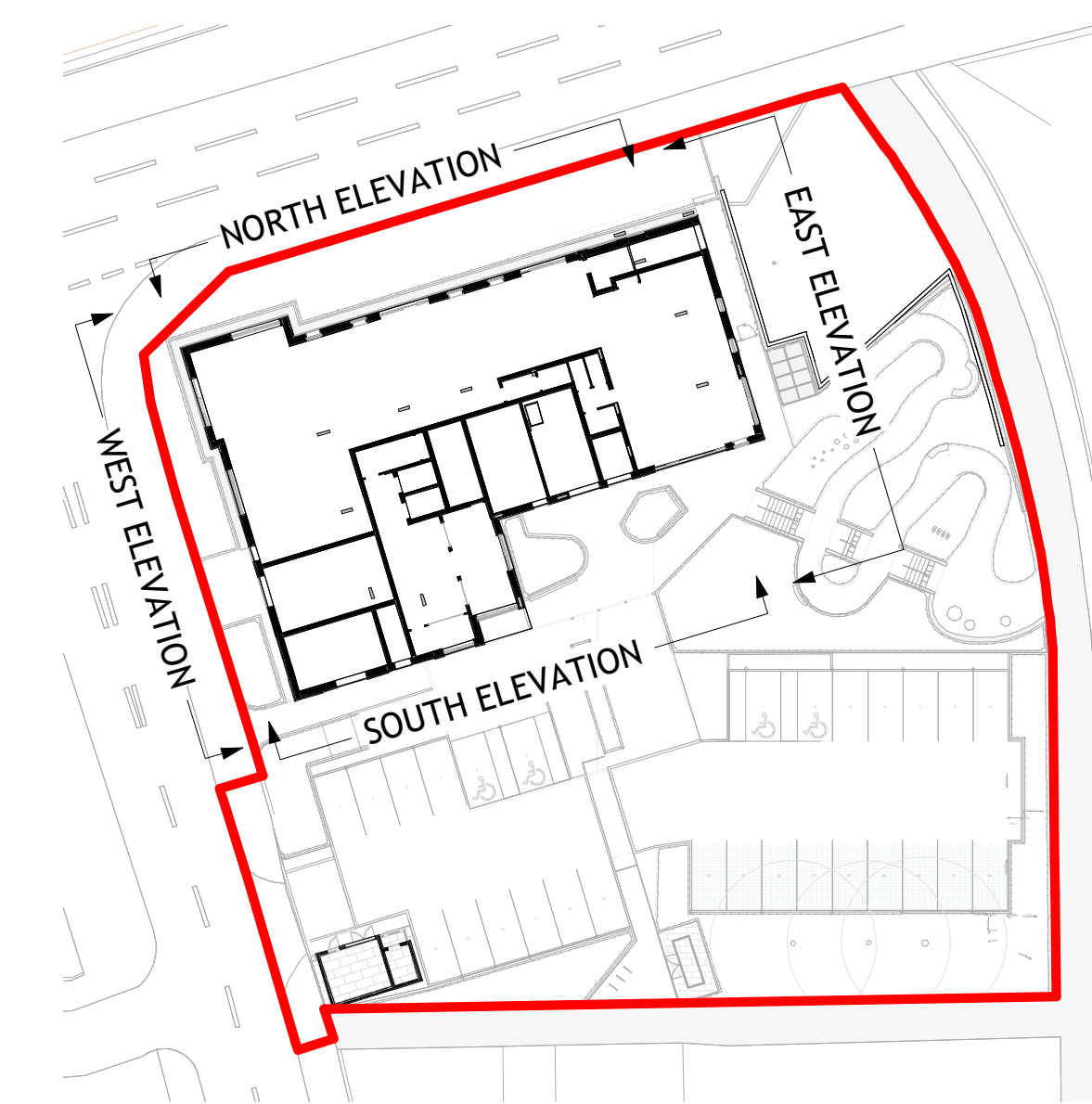
Drawing / Document Reference	Status
HARPR - MCB - XX - ZZ - DR - A - 0131	S4 - P010
Project Mem Originator Zone Level Type Discipline Number Suitability Revision	



**2 Proposed South Elevation**  
1 : 100



**3 Proposed West Elevation**  
1 : 100



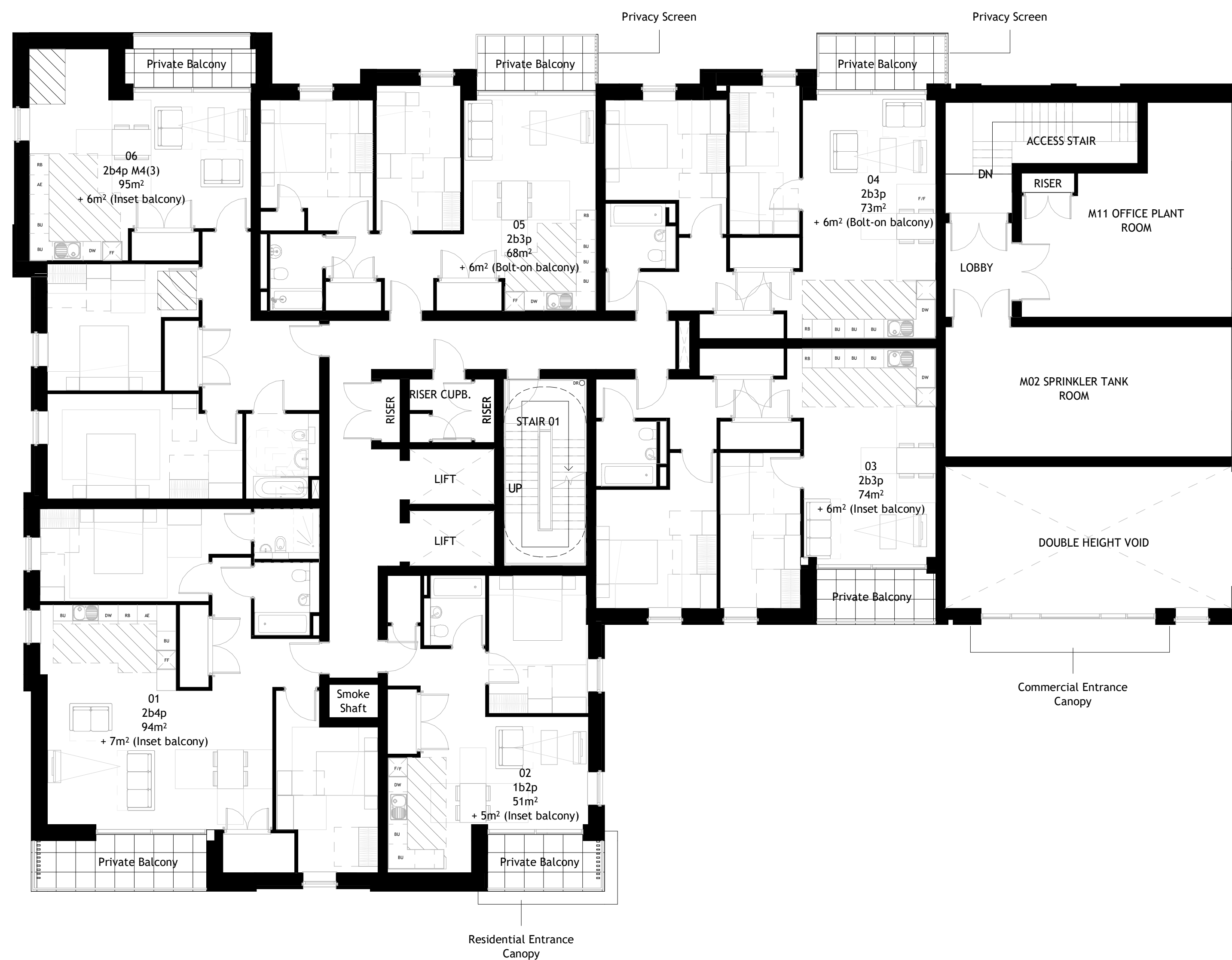
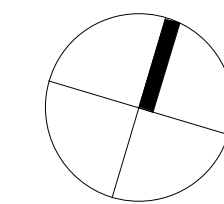
KEY PLAN



Notes  
Contractors must verify all dimensions on site before commencing any work on shop drawings Do not scale from this drawing  
McBains Ltd copyright

BIM Transmittal Disclaimer  
McBains Ltd makes no express or implied warranties with respect to the character, function, or capabilities of the data (inclusive of 3rd party data incorporated within), or the suitability of the data for any particular purpose beyond those originally intended by McBains Ltd. please refer to our standard terms and conditions for further details.

SCALE 1:100  
m



P010	Issued for Planning	21.04.23
P09	Issued for Information	31.03.23
P08	Issued for Information	20.03.23
C07	Stage 2 Issue	20.01.23
P06	Issued for Information	21.12.22
P05	Stage 3 Issue	13.06.22
C04	Issued for Planning	25.05.22
P03	Issued for Coordination	18.05.22
P02	Issued for Coordination	29.04.22
P01	Issued for Coordination	01.04.22

Revision	Amendment	Date
LP	CD	MEPB
Drawn by	Reviewed by	Approved by
60715A	DEC 2021	1 : 100 @ A1
MCB Number	Date Created	Scale @ A1

**McBains**

McBains Ltd  
5th Fl, 26 Finsbury Square London EC2A 1DS  
+44 (0)20 7786 7900 mcbaains.co.uk

Client  
HARLOW DISTRICT COUNCIL

Project  
PERRY ROAD, HARLOW  
ESSEX, CM18 7LT

Drawing Title  
Proposed - First Floor Plan

**ARCHITECTURE**

Drawing / Document Reference		Status
HARPR - MCB - XX - 01 - DR - A - 0300		S4 - P010
Project Mem	Originator	Zone
Level	Type	Discipline
Number	Suitability	Revision

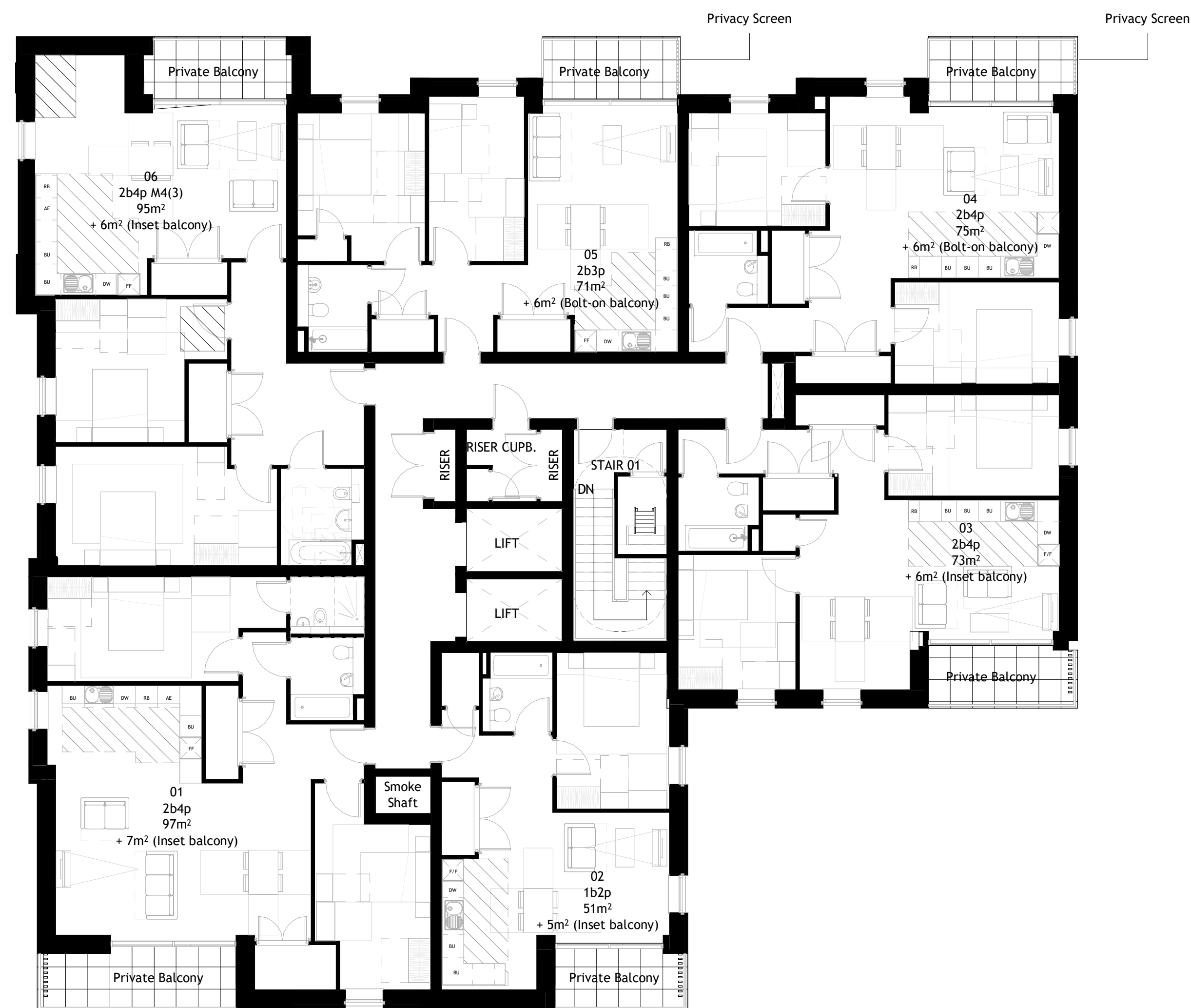
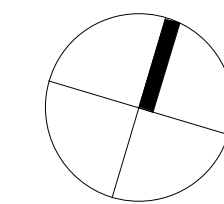
**1 Proposed - First Floor Plan**  
1 : 100



Notes  
Contractors must verify all dimensions on site before commencing any work on shop drawings Do not scale from this drawing  
McBains Ltd copyright

BIM Transmittal Disclaimer  
McBains Ltd makes no express or implied warranties with respect to the character, function, or capabilities of the data (inclusive of 3rd party data incorporated within), or the suitability of the data for any particular purpose beyond those originally intended by McBains Ltd. please refer to our standard terms and conditions for further details.

1 0 1 2 3 4 5  
SCALE 1:100 m



**1 Proposed - Fourth Floor Plan**  
1 : 100

P04	Issued for Planning	21.04.23
P03	Issued for Information	31.03.23
C02	Stage 2 Issue	20.01.23
P01	Issued for Information	21.12.22

Revision	Amendment	Date
DS	CD	MEPB
Drawn by	Reviewed by	Approved by
60715A	12/19/22	1 : 100 @ A1
MCB Number	Date Created	Scale @ A1

**McBains**

McBains Ltd  
5th Fl, 26 Finsbury Square London EC2A 1DS  
+44 (0)20 7786 7900 mcbaains.co.uk

Client  
HARLOW DISTRICT COUNCIL

Project  
PERRY ROAD, HARLOW  
ESSEX, CM18 7LT

Drawing Title  
PROPOSED - FOURTH FLOOR PLAN

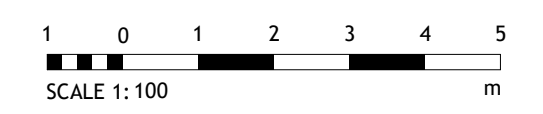
**ARCHITECTURE**

Drawing / Document Reference										Status
HARPR	MCB	XX	04	DR	A	0300	S4	P04		
Project ID#	Originator	Zone	Level	Type	Discipline	Number	Suitability	Revision		



Notes  
Contractors must verify all dimensions on site before commencing any work on shop drawings. Do not scale from this drawing.  
McBains Ltd copyright

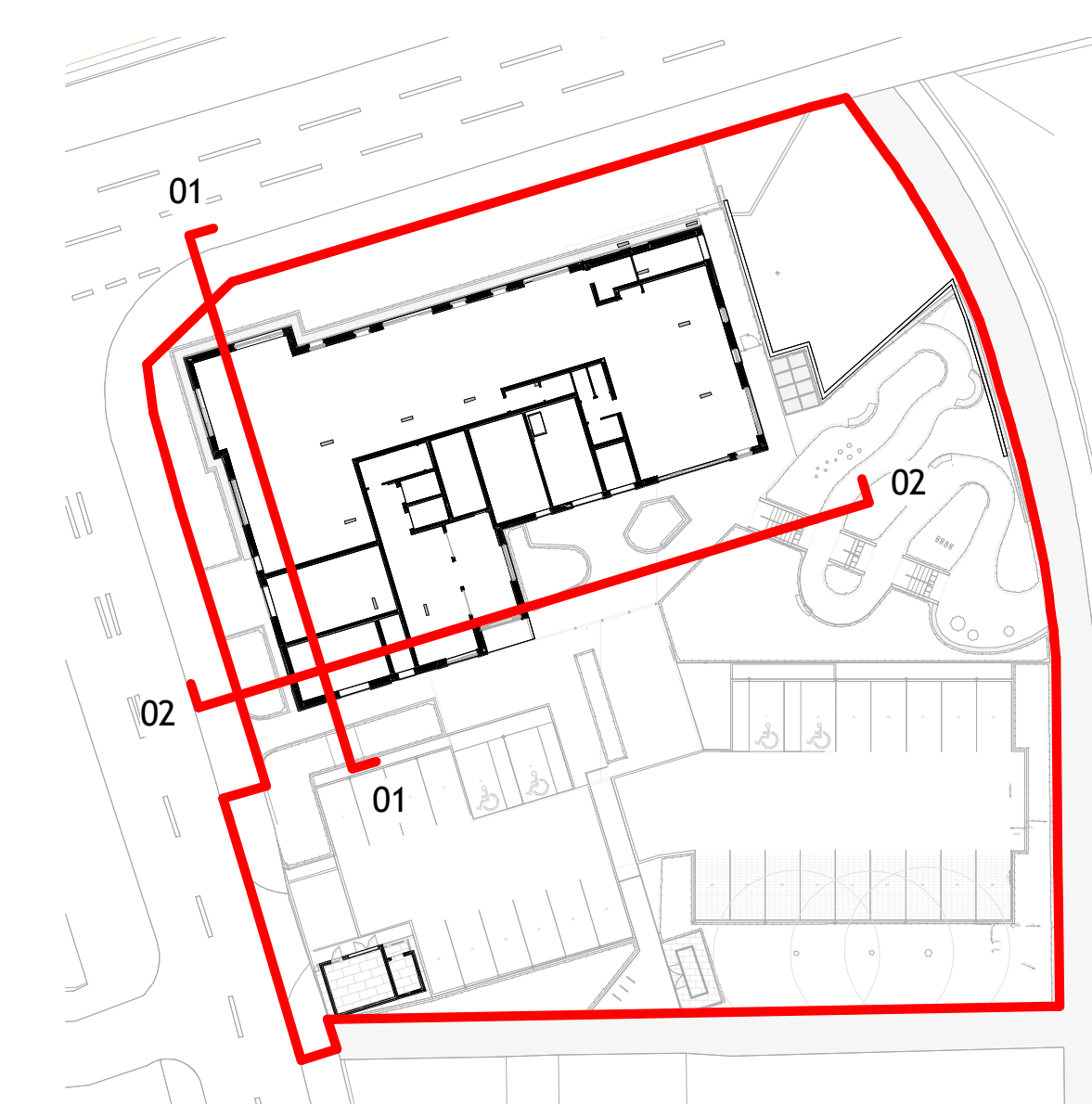
BIM Transmittal Disclaimer  
McBains Ltd makes no express or implied warranties with respect to the character, function, or capabilities of the data (inclusive of 3rd party data incorporated within), or the suitability of the data for any particular purpose beyond those originally intended by McBains Ltd. please refer to our standard terms and conditions for further details.



**1 Section 01**  
1 : 100



- COMMERCIAL
- RESIDENTIAL
- ANCILLARY
- CORE / PLANT



KEY PLAN

Revision	Amendment	Date
P09	Issued for Planning	21.04.23
P08	Issued for Information	31.03.23
C07	Stage 2 Issue Amended	07.02.23
C06	Stage 2 Issue	20.01.23
P05	Stage 3 Issue	13.06.22
C04	Issued for Planning	25.05.22
P03	Issued for Coordination	18.05.22
P02	Issued for Coordination - Window Types Updated	03.05.22
P01	Issued for Coordination	29.04.22

LP	CD	MEPB
Drawn by	Reviewed by	Approved by
60715A	07/02/2023	As indicated @ A1
MCB Number	Date Created	Scale @ A1

**McBains**

McBains Ltd  
5th Fl, 26 Finsbury Square London EC2A 1DS  
+44 (0)20 7786 7900 mcbains.co.uk

Client  
HARLOW DISTRICT COUNCIL

Project  
PERRY ROAD, HARLOW  
ESSEX, CM18 7LT

Drawing Title  
PROPOSED GA SECTIONS

**ARCHITECTURE**

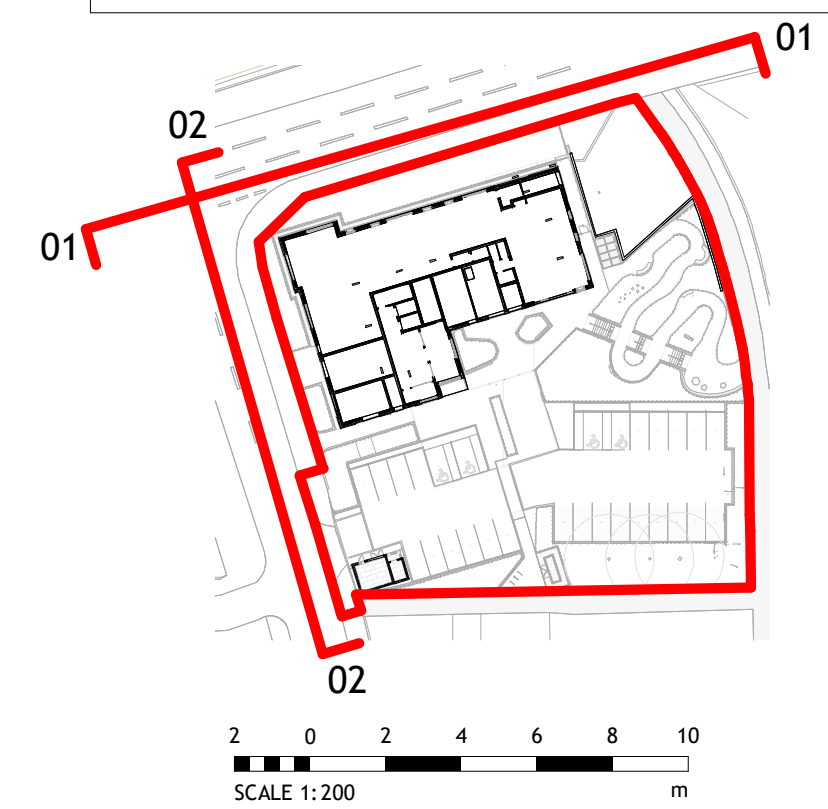
Drawing / Document Reference	Status
HARPR - MCB - XX - ZZ - DR - A - 0132	S4 - P09
Project Mem Originator Zone Level Type Discipline Number Suitability Revision	

**2 Section 02**  
1 : 100



Notes  
Contractors must verify all dimensions on site before commencing any work on shop drawings. Do not scale from this drawing.  
McBains Ltd copyright

BIM Transmittal Disclaimer  
McBains Ltd makes no express or implied warranties with respect to the character, function, or capabilities of the data (inclusive of 3rd party data incorporated within), or the suitability of the data for any particular purpose beyond those originally intended by McBains Ltd. please refer to our standard terms and conditions for further details.



**1 Proposed Site Elevation 01**  
1 : 200



**2 Proposed Site Elevation 02**  
1 : 200

P03	Issued for Planning	21.04.23
P02	Stage 3 Issue	13.06.22
C01	Issued for Planning	25.05.22

Revision	Amendment	Date
LP	CD	MEPB
Drawn by	Reviewed by	Approved by
60715A	05/04/22	As indicated @ A1
MCB Number	Date Created	Scale @ A1

**McBains**

McBains Ltd  
5th Fl, 26 Finsbury Square London EC2A 1DS  
+44 (0)20 7786 7900 mcbaains.co.uk

Client  
HARLOW DISTRICT COUNCIL

Project  
PERRY ROAD, HARLOW  
ESSEX, CM18 7LT

Drawing Title  
PROPOSED GA SITE ELEVATIONS

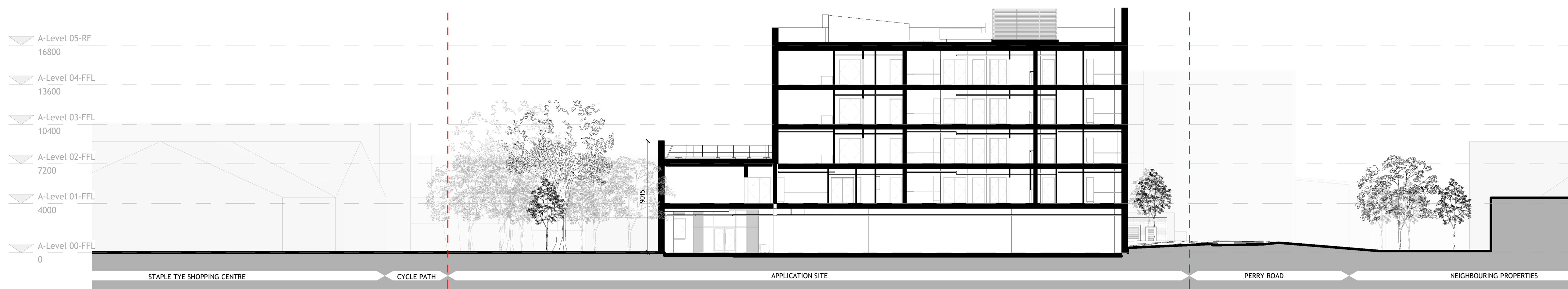
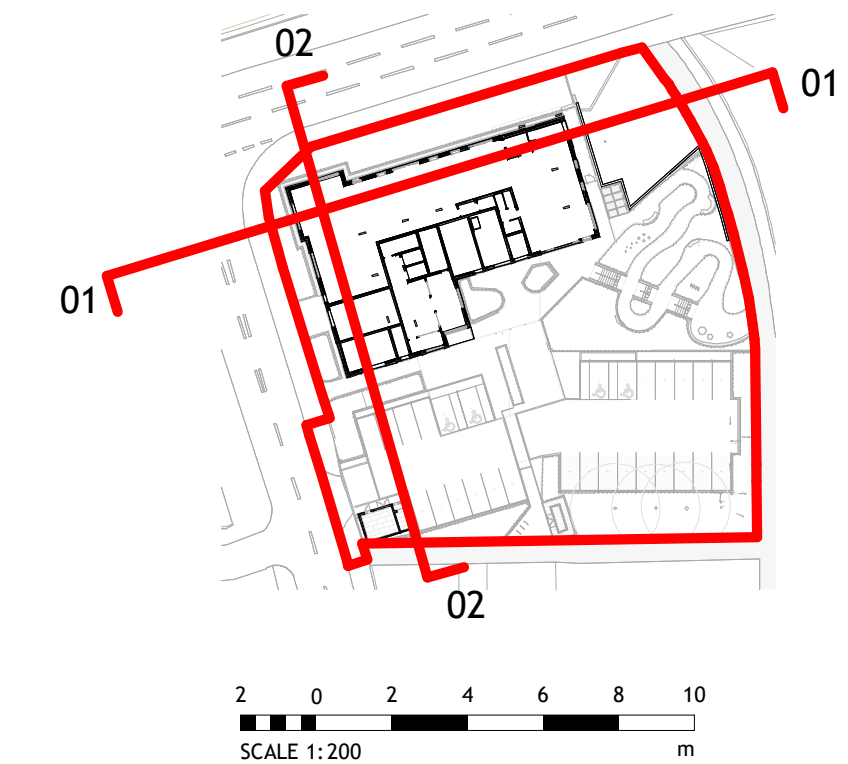
**ARCHITECTURE**

Drawing / Document Reference							Status
HARPR	MCB	XX	ZZ	DR	A	0133	S4 - P03
Project Mem	Originator	Zone	Level	Type	Discipline	Number	Suitability Revision

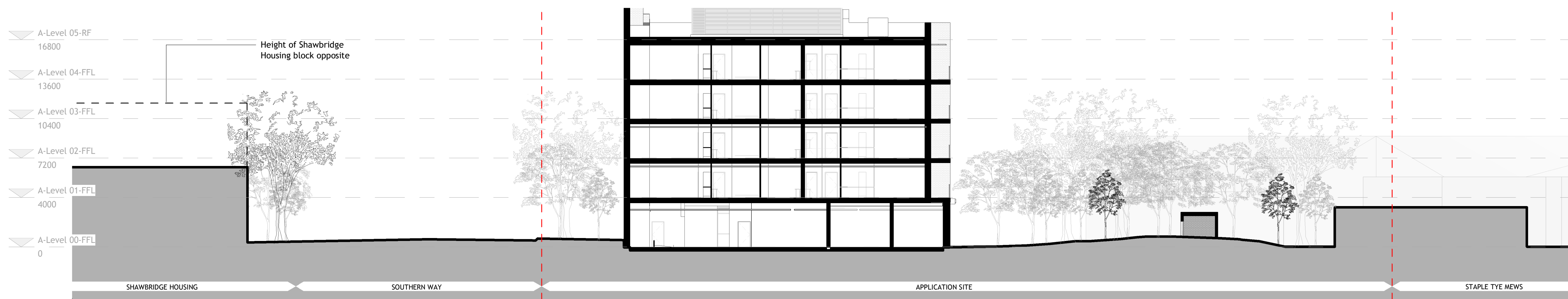


Notes  
Contractors must verify all dimensions on site before commencing any work on shop drawings Do not scale from this drawing  
McBains Ltd copyright

BIM Transmittal Disclaimer  
McBains Ltd makes no express or implied warranties with respect to the character, function, or capabilities of the data (inclusive of 3rd party data incorporated within), or the suitability of the data for any particular purpose beyond those originally intended by McBains Ltd. please refer to our standard terms and conditions for further details.



1 Proposed Site Section 01  
1 : 200



2 Proposed Site Section 02  
1 : 200

P04	Issued for Planning	21.04.23
C03	Stage 2 Issue Amended	07.02.23
P02	Stage 3 Issue	13.06.22
C01	Issued for Planning	25.05.22

Revision	Amendment	Date
LP	CD	MEPB
Drawn by	Reviewed by	Approved by
60715A	07/02/2023	As indicated @ A1
MCB Number	Date Created	Scale @ A1

**McBains**

McBains Ltd  
5th Fl, 26 Finsbury Square London EC2A 1DS  
+44 (0)20 7786 7900  
mcbains.co.uk

Client  
HARLOW DISTRICT COUNCIL

Project  
PERRY ROAD, HARLOW  
ESSEX, CM18 7LT

Drawing Title  
Proposed GA Site Sections

**ARCHITECTURE**

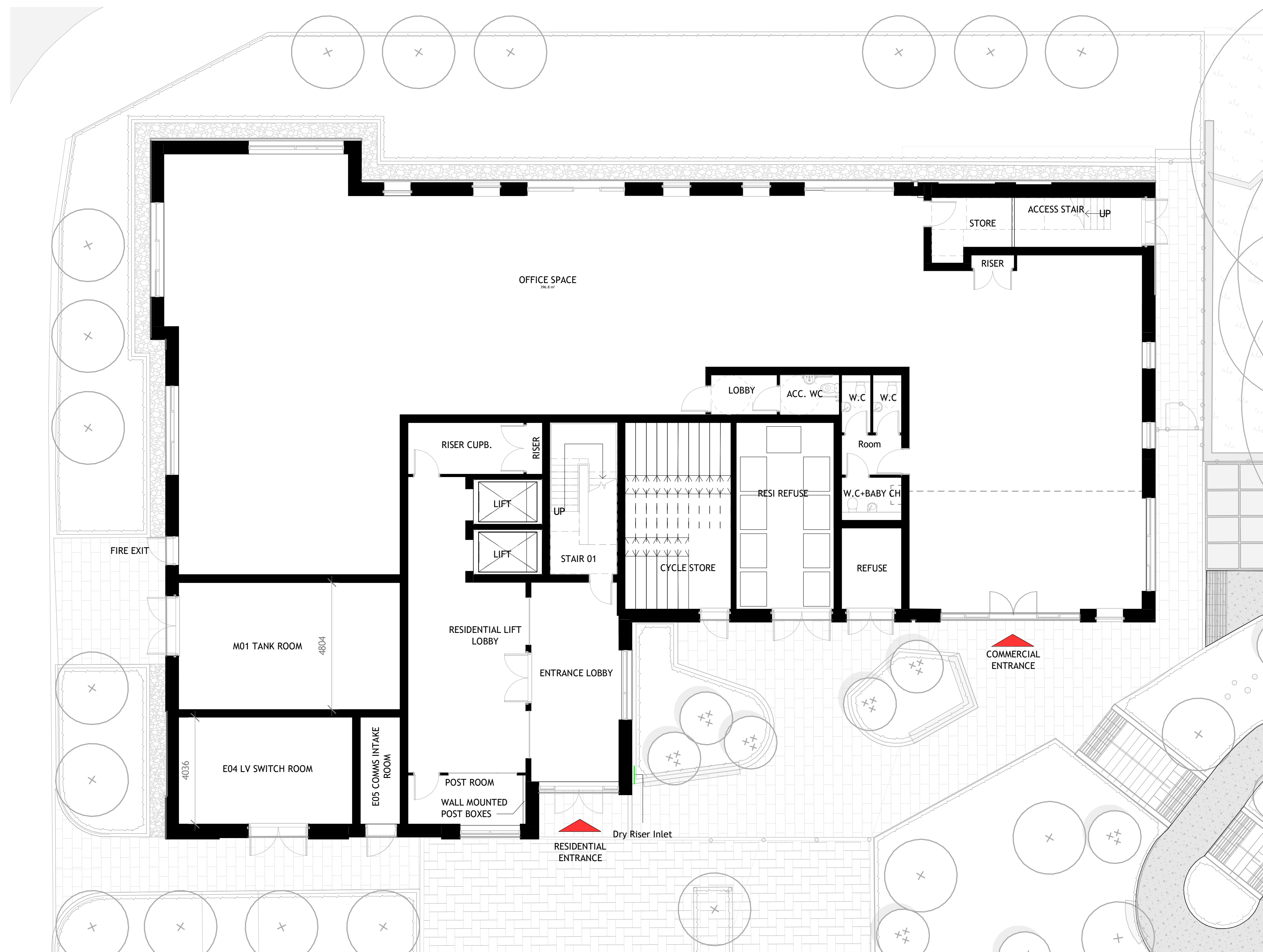
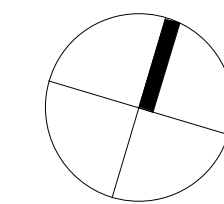
Drawing / Document Reference							Status
HARPR	MCB	XX	ZZ	DR	A	0134	S4 - P04
Project Mem	Originator	Zone	Level	Type	Discipline	Number	Suitability Revision



Notes  
Contractors must verify all dimensions on site before commencing any work on shop drawings Do not scale from this drawing  
McBains Ltd copyright

BIM Transmittal Disclaimer  
McBains Ltd makes no express or implied warranties with respect to the character, function, or capabilities of the data (inclusive of 3rd party data incorporated within), or the suitability of the data for any particular purpose beyond those originally intended by McBains Ltd. please refer to our standard terms and conditions for further details.

1 0 1 2 3 4 5  
SCALE 1:100 m



P012	Issued for Planning	21.04.23
P011	Issued for Information	31.03.23
P010	Issued for Information	20.03.23
C09	Stage 2 Issue	20.01.23
P08	Issued for Information	21.12.22
P07	Stage 3 Issue	13.06.22
P06	Issued for Information	08.06.22
C05	Issued for Planning	25.05.22
P04	Issued for Coordination	18.05.22
P03	Issued for Information	12.05.22
P02	Issued for Coordination	29.04.22
P01	Issued for Coordination	01.04.22

Revision	Amendment	Date
LP	CD	MEPB
Drawn by	Reviewed by	Approved by
60715A	DEC 2021	1 : 100 @ A1
MCB Number	Date Created	Scale @ A1

**McBains**

McBains Ltd  
5th Fl, 26 Finsbury Square London EC2A 1DS  
+44 (0)20 7786 7900 mcbains.co.uk

Client  
HARLOW DISTRICT COUNCIL

Project  
PERRY ROAD, HARLOW  
ESSEX, CM18 7LT

Drawing Title  
Proposed - Ground Floor Plan

**ARCHITECTURE**

Drawing / Document Reference	Status							
HARPR - MCB - XX - 00 - DR - A - 0300	S4 - P012							
Project Name	Originator	Zone	Level	Type	Discipline	Number	Suitability	Revision

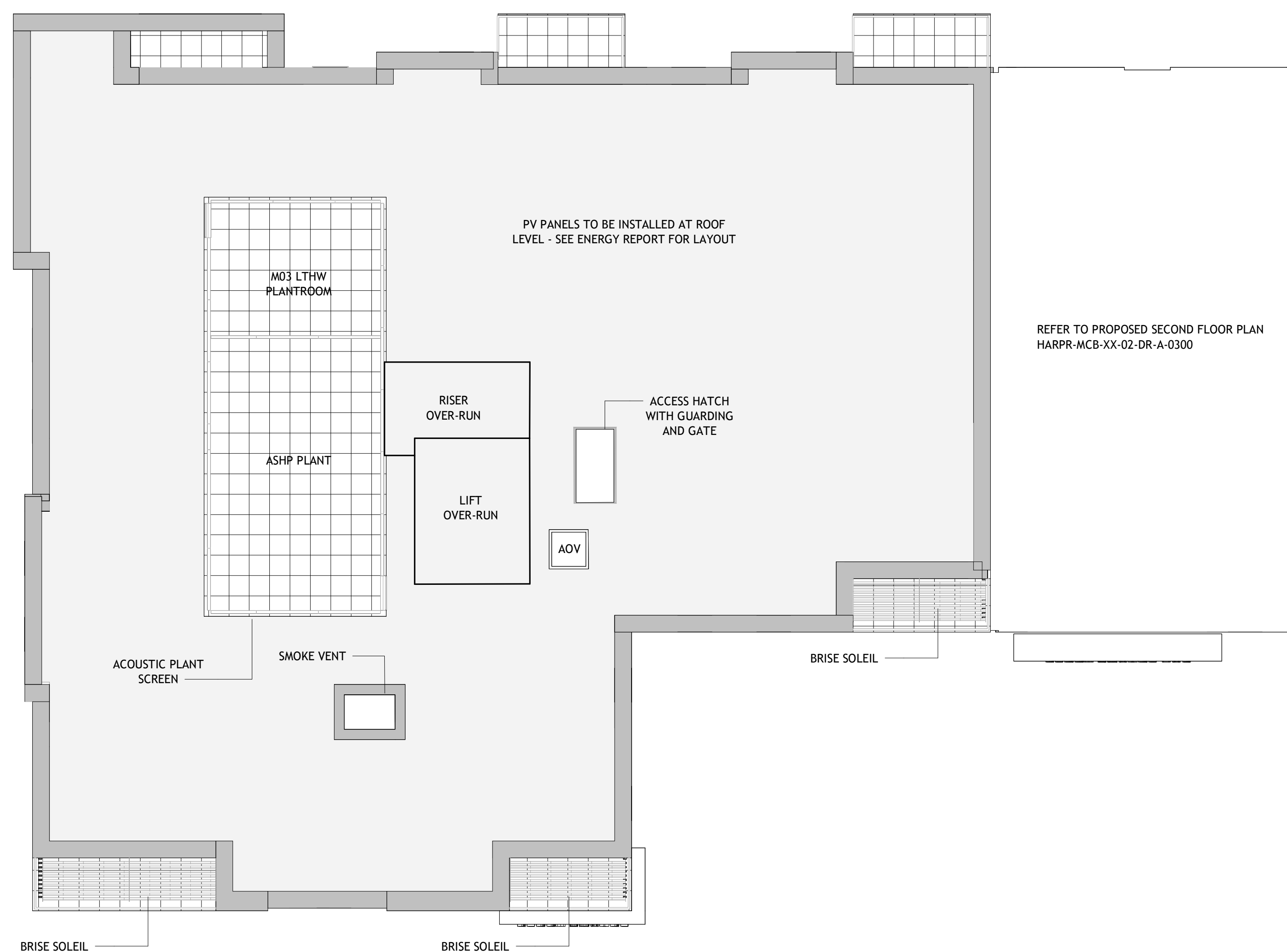
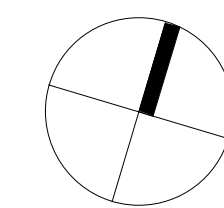
**1 Proposed - Ground Floor Plan**  
1 : 100



Notes  
Contractors must verify all dimensions on site before commencing any work on shop drawings Do not scale from this drawing  
McBains Ltd copyright

BIM Transmittal Disclaimer  
McBains Ltd makes no express or implied warranties with respect to the character, function, or capabilities of the data (inclusive of 3rd party data incorporated within), or the suitability of the data for any particular purpose beyond those originally intended by McBains Ltd. please refer to our standard terms and conditions for further details.

1 0 1 2 3 4 5  
SCALE 1:100 m



P09	Issued for Planning	21.04.23
P08	Issued for Information	31.03.23
C07	Stage 2 Issue	20.01.23
P06	Issued for Information	21.12.22
P05	Stage 3 Issue	13.06.22
C04	Issued for Planning	25.05.22
P03	Issued for Coordination	18.05.22
P02	Issued for Coordination	29.04.22
P01	Issued for Coordination	01.04.22

Revision	Amendment	Date
LP	CD	MEPB
Drawn by	Reviewed by	Approved by
60715A	03/03/22	1 : 100 @ A1
MCB Number	Date Created	Scale @ A1

**McBains**

McBains Ltd  
5th Fl, 26 Finsbury Square London EC2A 1DS  
+44 (0)20 7786 7900 mcBains.co.uk

Client  
HARLOW DISTRICT COUNCIL

Project  
PERRY ROAD, HARLOW  
ESSEX, CM18 7LT

Drawing Title  
PROPOSED - ROOF PLAN

**ARCHITECTURE**

Drawing / Document Reference		Status
HARPR - MCB - XX - RF - DR - A - 0300		S4 - P09
Project Mem	Originator	Zone
Level	Type	Discipline
Number	Suitability	Revision

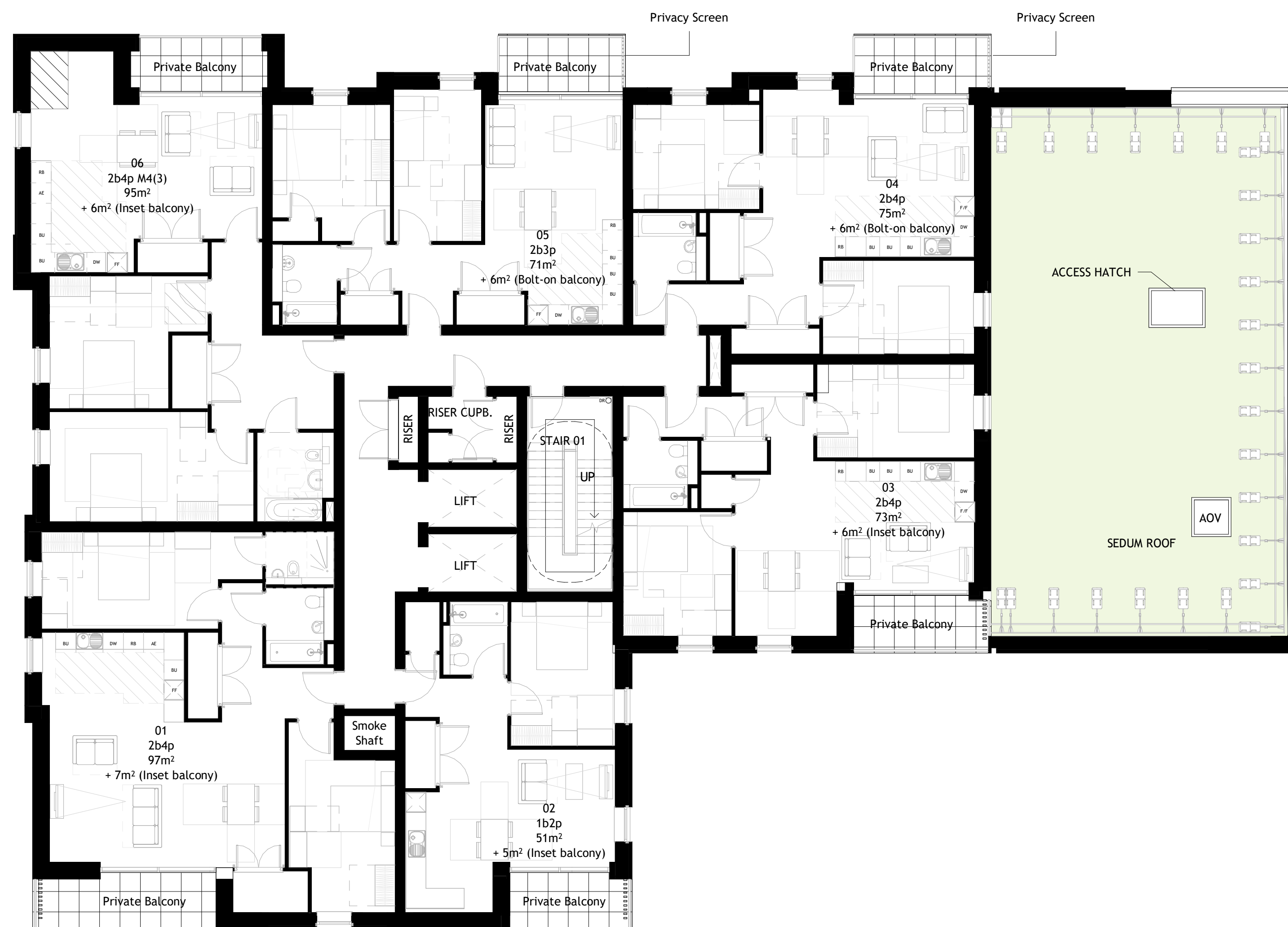
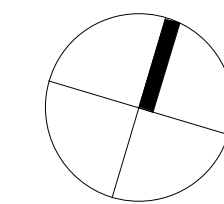
**1 Proposed - Roof Plan**  
1 : 100



Notes  
Contractors must verify all dimensions on site before commencing any work on shop drawings. Do not scale from this drawing.  
McBains Ltd copyright

BIM Transmittal Disclaimer  
McBains Ltd makes no express or implied warranties with respect to the character, function, or capabilities of the data (inclusive of 3rd party data incorporated within), or the suitability of the data for any particular purpose beyond those originally intended by McBains Ltd. please refer to our standard terms and conditions for further details.

SCALE 1:100  
m



Revision	Amendment	Date
P09	Issued for Planning	21.04.23
P08	Issued for Information	31.03.23
C07	Stage 2 Issue	20.01.23
P06	Issued for Information	21.12.22
P05	Stage 3 Issue	13.06.22
C04	Issued for Planning	25.05.22
P03	Issued for Coordination	18.05.22
P02	Issued for Coordination	29.04.22
P01	Issued for Coordination	01.04.22

LP	CD	MEPB
Drawn by	Reviewed by	Approved by
60715A	Jan 2022	1 : 100 @ A1
MCB Number	Date Created	Scale @ A1

**McBains**

McBains Ltd  
5th Fl, 26 Finsbury Square London EC2A 1DS  
+44 (0)20 7786 7900 mcbains.co.uk

Client  
HARLOW DISTRICT COUNCIL

Project  
PERRY ROAD, HARLOW  
ESSEX, CM18 7LT

Drawing Title  
Proposed - Second Floor Plan

**ARCHITECTURE**

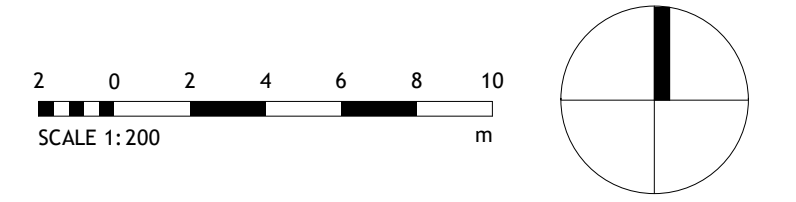
Drawing / Document Reference	Status
HARPR - MCB - XX - 02 - DR - A - 0300	S4 - P09
Project Mem	Originator
Zone	Level
Type	Discipline
Number	Suitability
Revision	

**1** Proposed - Second Floor Plan  
1 : 100



Notes  
Contractors must verify all dimensions on site before commencing any work on shop drawings Do not scale from this drawing  
McBains Ltd copyright

BIM Transmittal Disclaimer  
McBains Ltd makes no express or implied warranties with respect to the character, function, or capabilities of the data (inclusive of 3rd party data incorporated within), or the suitability of the data for any particular purpose beyond those originally intended by McBains Ltd. please refer to our standard terms and conditions for further details.



- SITE BOUNDARY
- EV CHARGING POINT
- EXISTING TREES TO BE REMOVED



P09	Issued for Planning	21.04.23
P08	Issued for Information	31.03.23
C07	Stage 2 Issue	20.01.23
C06	Issued for Planning - Updated Landscape Information	22.07.22
C05	Issued for Planning	25.05.22
P04	Issued for Coordination	18.05.22
P03	Issued for Information	12.05.22
P02	Issued for Information	25.04.22
P01	Issued for Coordination	01.04.22

Revision	Amendment	Date
LP	CD	MEPB
Drawn by	Reviewed by	Approved by
60715A	03/03/22	1 : 200 @ A1
MCB Number	Date Created	Scale @ A1

**McBains**  
McBains Ltd  
5th Fl, 26 Finsbury Square London EC2A 1DS  
+44 (0)20 7786 7900  
mcbains.co.uk

Client  
HARLOW DISTRICT COUNCIL

Project  
PERRY ROAD, HARLOW  
ESSEX, CM18 7LT

Drawing Title  
PROPOSED - SITE PLAN

**ARCHITECTURE**

Drawing / Document Reference		Status
HARPR - MCB - XX - SI - DR - A - 0110		S4 - P09
Project Mem	Originator	Zone
	Level	Type
	Discipline	Number
	Suitability	Revision

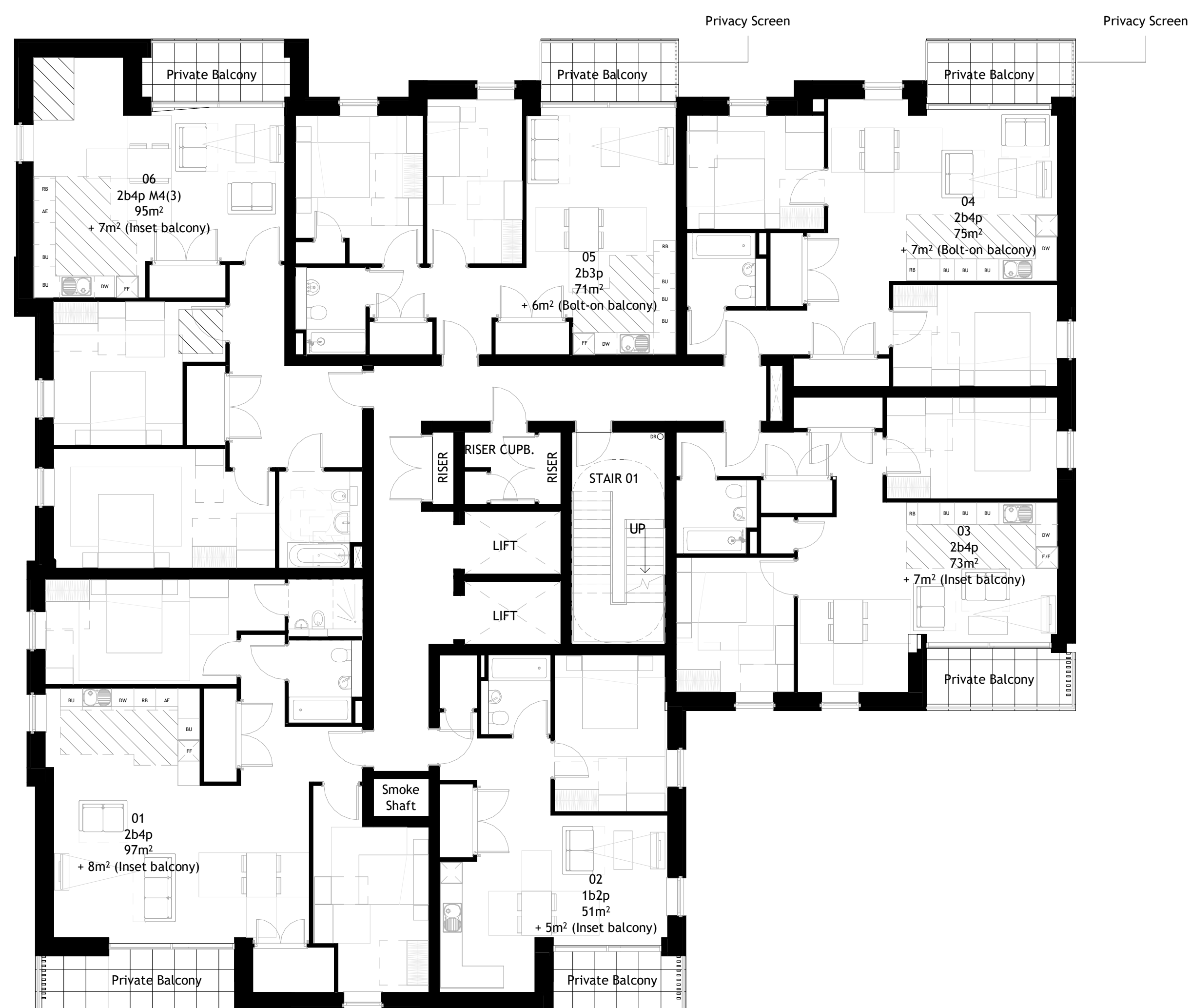
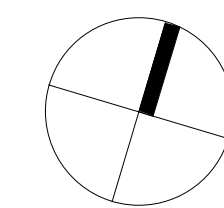
**1 Proposed - SITE PLAN**  
1 : 200



Notes  
Contractors must verify all dimensions on site before commencing any work on shop drawings. Do not scale from this drawing.  
McBains Ltd copyright

BIM Transmittal Disclaimer  
McBains Ltd makes no express or implied warranties with respect to the character, function, or capabilities of the data (inclusive of 3rd party data incorporated within), or the suitability of the data for any particular purpose beyond those originally intended by McBains Ltd. please refer to our standard terms and conditions for further details.

SCALE 1:100  
m



**1 Proposed - Third Floor Plan**  
1 : 100

Revision	Amendment	Date
P09	Issued for Planning	21.04.23
P08	Issued for Information	31.03.23
C07	Stage 2 Issue	20.01.23
P06	Issued for Information	21.12.22
P05	Stage 3 Issue	13.06.22
C04	Issued for Planning	25.05.22
P03	Issued for Coordination	18.05.22
P02	Issued for Coordination	29.04.22
P01	Issued for Coordination	01.04.22

LP	CD	MEPB
Drawn by	Reviewed by	Approved by
60715A	03/03/22	1 : 100 @ A1
MCB Number	Date Created	Scale @ A1

**McBains**

McBains Ltd  
5th Fl, 26 Finsbury Square London EC2A 1DS  
+44 (0)20 7786 7900 mcbaains.co.uk

Client  
HARLOW DISTRICT COUNCIL

Project  
PERRY ROAD, HARLOW  
ESSEX, CM18 7LT

Drawing Title  
PROPOSED - THIRD FLOOR PLAN

**ARCHITECTURE**

Project Ref	Originator	Zone	Level	Type	Discipline	Number	Suitability	Revision
HARPR	MCB	XX	03	DR	A	0300	S4	P09